



# Wilmette

## Public School District 39

### Wilmette, Illinois

**Comprehensive Annual Financial Report**  
**Year ended June 30, 2012**



COMPREHENSIVE ANNUAL FINANCIAL REPORT  
OF THE  
WILMETTE PUBLIC SCHOOLS DISTRICT 39  
WILMETTE, ILLINOIS

For the Fiscal Year Ended June 30, 2012

Official Issuing Report  
Dr. Crystal LeRoy, Director of Finance & Operations

Department Issuing Report  
Business Office

**THIS PAGE INTENTIONALLY LEFT BLANK**

**WILMETTE PUBLIC SCHOOLS DISTRICT 39**

**TABLE OF CONTENTS**

Comprehensive Annual Financial Report

June 30, 2012

---

	<u>Page(s)</u>
<b>Introductory Section:</b>	
Transmittal Letter	i-viii
Principal Officers and Advisors	ix
Table of Organization	x
<b>Financial Section:</b>	
<b>Independent Auditors' Report</b>	1-2
<b>Management's Discussion and Analysis</b>	3-12
<b>Basic Financial Statements</b>	
Government-wide Financial Statements:	
Statement of Net Assets	13
Statement of Activities	14
Fund Financial Statements:	
Balance Sheet – Governmental Funds	15
Reconciliation of the Balance Sheet of Governmental Funds to the Statement of Net Assets	16
Statement of Revenues, Expenditures and Changes in Fund Balances – Governmental Funds	17
Reconciliation of the Statement of Revenues, Expenditures and Changes in Fund Balances of Governmental Funds to the Statement of Activities	18
Statement of Fiduciary Assets and Liabilities – Agency Fund – Activity Funds	19
Notes to Financial Statements	20-44
<b>Required Supplementary Information</b>	
Schedule of Funding Progress – Illinois Municipal Retirement Fund	45
Schedule of Funding Progress – Other Post Employment Benefits	46

**WILMETTE PUBLIC SCHOOLS DISTRICT 39**  
**TABLE OF CONTENTS**  
Comprehensive Annual Financial Report  
June 30, 2012

---

	<u>Page(s)</u>
Schedule of Revenues, Expenditures and Changes in Fund Balances – Budget and Actual – General Fund	47
Notes to Required Supplementary Information	48

**Combining and Individual Fund Financial Statements and Schedules**

General Fund:	
Balance Sheet by Account	49
Schedule of Revenues, Expenditures and Changes in Fund Balances by Account	50
Educational Account:	
Schedule of Revenues, Expenditures and Changes in Fund Balance – Budget and Actual	51-59
Operations and Maintenance Account:	
Schedule of Revenues, Expenditures and Changes in Fund Balance – Budget and Actual	60-61
Working Cash Account:	
Schedule of Revenues, Expenditures and Changes in Fund Balance – Budget and Actual	62
Tort Immunity Account:	
Schedule of Revenues, Expenditures and Changes in Fund Balance – Budget and Actual	63
Major Debt Service Fund:	
Debt Service Fund:	
Schedule of Revenues, Expenditures and Changes in Fund Balance – Budget and Actual	64
Combining Balance Sheet – Nonmajor Governmental Funds	65
Combining Schedule of Revenues, Expenditures and Changes in Fund Balances – Nonmajor Governmental Funds	66
Nonmajor Governmental Funds:	
Special Revenue Funds:	
Transportation Fund:	
Schedule of Revenues, Expenditures and Changes in Fund Balance – Budget and Actual	67

**WILMETTE PUBLIC SCHOOLS DISTRICT 39**  
**TABLE OF CONTENTS**  
Comprehensive Annual Financial Report  
June 30, 2012

---

	<u>Page(s)</u>
Municipal Retirement/Social Security Fund: Schedule of Revenues, Expenditures and Changes in Fund Balance – Budget and Actual	68-69
Capital Projects Funds: Fire Prevention and Safety Fund: Schedule of Revenues, Expenditures and Changes in Fund Balance – Budget and Actual	70
Fiduciary Fund – Agency Fund: Activity Funds – Schedule of Changes in Assets and Liabilities	71
<b>Statistical Section – Unaudited:</b>	
Net Assets by Component Last Ten Fiscal Years	72-73
Changes in Net Assets Last Ten Fiscal Years	74-75
Fund Balances, Governmental Funds Last Ten Fiscal Years	76-77
Changes in Fund Balances, Governmental Funds Last Ten Fiscal Years	78-79
Equalized Assessed Valuation and Estimated Actual Value of Taxable Property Last Ten Levy Years	80
Property Tax Rates –Direct and Overlapping Governments Last Ten Tax Levy Years	81-82
Principal Property Taxpayers Current Year and Five Years Ago	83-84
Schedule of Property Tax Rates, Extensions and Collections Last Ten Tax Levy Years	85-86
Ratio of Outstanding Debt by Type Last Ten Fiscal Years	87

**WILMETTE PUBLIC SCHOOLS DISTRICT 39**  
**TABLE OF CONTENTS**  
Comprehensive Annual Financial Report  
June 30, 2012

---

	<u>Page(s)</u>
Ratio of General Bonded Debt to Equalized Assessed Valuation and Net Bonded Debt Per Capita Last Ten Fiscal Years	88
Computation of Direct and Overlapping Bonded Debt June 30, 2012	89
Legal Debt Margin Information Last Ten Fiscal Years	90-91
Demographic and Miscellaneous Statistics Last Ten Calendar Years	92
Principal Employers Current Year and Four Years Ago	93
Number of Employees by Type Last Ten Fiscal Years	94-95
Operating Indicators by Function Last Ten Fiscal Years	96-97
School Building Information Last Ten Fiscal Years	98-99
Operating Statistics Last Ten Fiscal Years	100

November 12, 2012

President and Members of the  
Board of Education  
Wilmette Public Schools District 39  
615 Locust Road  
Wilmette, Illinois 60091

The Comprehensive Annual Financial Report of Elementary School District 39, Wilmette, Illinois, for the fiscal year ended June 30, 2012 is submitted herewith. The audit fieldwork was completed on August 23, 2012 and the report was subsequently issued. Responsibility for the accuracy of the data presented and the completeness and fairness of the presentation, including all disclosures, rests with the District. We believe the data as presented are: (1) accurate in all material aspects, (2) presented in a manner designed to fairly set forth the financial position and results of operations of the District as shown by the disclosure of all financial activity of its various funds; and (3) that all disclosures necessary for maximum public understanding of the District's financial status have been incorporated in the report.

Generally accepted accounting principles require that management provide a narrative introduction, overview and analysis to accompany the basic financial statements in the form of Management's Discussion and Analysis (MD&A). The letter of transmittal is designed to complement the MD&A and should be read in conjunction with it. The District's MD&A can be found immediately following the independent auditors' report.

### **BASIS OF ACCOUNTING AND REPORTING**

The Comprehensive Annual Financial Report is presented in three sections: Introductory, Financial and Statistical. The Introductory Section includes the transmittal letter, the District's organizational chart, and a list of principal officials. The Financial Section includes the management's discussion and analysis, government-wide financial statements, the fund financial statements, required supplementary information, individual fund statements, as well as the independent auditors' report. The Statistical Section includes a number of tables of unaudited data depicting the financial history of the District for the past ten years, demographics, and other miscellaneous information.

School District 39 is required to undergo an annual single audit in conformity with the provisions of the Single Audit Act Amendments of 1996 and U.S. Office of Management and Budget Circular A-133, "Audits of States, Local Governments and Non-profit Organizations." Information related to this single audit, including the schedule of federal expenditures of federal awards, findings and recommendations and independent auditors' report on the internal control structure and compliance with applicable laws and regulations are included in a separate report.

This report includes all funds of the District. The District reports on the full accrual basis of accounting for its government-wide financial statements and modified accrual for its fund financial statements. These bases are applied to the District's budget and accounting records. The Notes to Basic Financial Statements expand upon these bases as well as the District's accounting policies and procedures. All District funds are included in this report and have been audited by Klein, Hall & Associates, LLC.



## **GENERAL INFORMATION**

The District is located approximately 15 miles north of the Chicago Loop, bordering Lake Michigan and comprises most of the Village of Wilmette and a small portion of Glenview. The village is a residential community with a population of about 26,119. It consists of moderate to high-income residential housing and a prosperous commercial downtown area. There is no heavy industry in Wilmette. Wilmette, as a community, is built out.

District 39 was founded in 1901 and currently includes four elementary schools, one middle school, one junior high school and an administration building and had an enrollment of 3,660 in 2012. An elected 7-member Board of Education and a full-time administrative staff govern the District. The District employs 540 persons. Of these, 17 are administrators, 318 are teachers and 205 are non-certified personnel. Elementary students in the District continue their education at New Trier Township High School, which is recognized as one of the leading high school educational institutions in the United States.

District 39 enjoys a high level of parental participation and involvement because parents make it a priority to be involved in their children's education. Many adults are engaged in professional pursuits. The high academic level characterizing the community contributes to the respect citizens have for quality education. As a result, citizens devote substantial time and effort to ensure that excellence prevails.

Community involvement is of paramount importance to District 39. Integral to the community is the Wilmette Educational Foundation, which provides financial assistance to support individual, school, and community endeavors. Teachers, administrators, the Board of Education, and community members value the Foundation as well. Community members are also involved in the Community Review Committee that helps study and prioritize goals for the school district.

## **REPORTING ENTITY**

The District defines its reporting entity by applying the criteria set forth in GASB 14 to potential component units. Briefly, a component unit is an organization for which the District is financially accountable or other organizations that, because of the nature or significance of their relationship with the District, would cause the District's financial statements to be misleading or incomplete if they were omitted from the reporting entity. These criteria are discussed in more detail in Note 1 to the general purpose financial statements.

Using these criteria, management has determined that the District has no component units, nor is it a component unit of any other organization.

## **DISTRICT FUNDS**

The District's accounts are organized as separate accounting entities called funds. District resources are allocated to and accounted for in individual funds as required by the State of Illinois. Each fund has specific functions based upon the purposes for which the District's resources are to be expended. This allows for a more controlled process of spending activities. The following describes the fund types implemented in School District 39:

- 1) **General Fund** – accounts for the revenues and expenditures that are used in providing the educational program for the children of the District.
- 2) **Special Revenue Funds** – account for specific revenue sources that are legally restricted to expenditures for specified purposes (e.g., Operations and Maintenance, Transportation, Working Cash and Municipal Retirement/Social Security).
- 3) **Debt Service Fund** – accounts for the accumulation of resource for, and the payment of, general long-term debt principal, interest, and related costs. All bond issues are maintained through the Bond and Interest Fund.
- 4) **Capital Projects Fund** – accounts for financial resources to be used for the acquisition or construction of major capital facilities.
- 5) **Agency Fund** – accounts for the assets held by the District for student organizations.

## **ACCOUNTING SYSTEMS AND BUDGETARY CONTROL**

The financial statements have been prepared in accordance with generally accepted accounting principles that are appropriate to local governmental units of this type. The presentation allows the reader to obtain an overview of the District's financial operations by viewing the basic financial statements in the front section of the report. All of the figures used in the following discussion were obtained or derived from these financial statements, attached herewith.

In developing and evaluating the District's accounting system, consideration is given to the adequacy of the internal accounting controls. Such controls are designed to provide reasonable, but not absolute, assurance for the safeguarding of assets against loss from unauthorized use or disposition and the reliability of financial records for preparing financial statements and maintaining accountability for assets. We believe that our internal accounting controls adequately safeguard District assets and provide reasonable assurance of proper recording of financial data. Budgetary control is maintained at line item levels and built up into program and cost centers before being combined to create fund totals. All actual activity compared to budget is reported to the District's administrative team and to the Board of Education on a monthly basis. The monthly report compares each line item account balance to the annual budget with accumulation to the cost center, fund, and total district levels. Full disclosures are made if extraordinary variances appear during the year.

**GENERAL GOVERNMENTAL ACCOUNTING FUNCTIONS**

The District has three sources of revenue: local, state, and federal. By far the largest source, and the source the District is most dependent on, is the local source.

Revenues for general District functions of all Governmental Fund Types totaled \$64,211,242, an increase of 22.9% when compared to FY 2011.

<i>Revenue Sources</i>	<i>2012 Amount (\$000)</i>	<i>Percent of Total</i>	<i>Increase (Decrease) from 2011 (\$000)</i>	<i>Percentage Increase (Decrease) from 2011</i>
<b><u>LOCAL REVENUES</u></b>				
Property Taxes	\$48,691	75.8%	\$11,406	30.6%
Personal Property Replacement Taxes	433	0.7%	(1)	(0.2%)
Earnings on Investments	13	-%	(16)	(55.2%)
Other	<u>3,711</u>	<u>5.8%</u>	<u>255</u>	7.4%
Total Local Revenues	52,848	82.3%	11,644	28.3%
State and Federal Sources	<u>11,363</u>	<u>17.7%</u>	<u>327</u>	3.0%
TOTAL REVENUE	<u>\$64,211</u>	<u>100.0%</u>	<u>\$11,971</u>	<u>22.9%</u>

Total Local Revenues posted a net increase of 28.3% in Fiscal Year 2012 when compared to the preceding fiscal year. The increase is due to the passage of a referendum. Low interest rates on investments resulted in lower than expected interest earnings for Fiscal Year 2012. Despite \$584,242 in uncollected State payments, revenue received from State and Federal Sources increased by 3.0% primarily due to the receipt of State payments for FY11 received in FY12. The on-behalf payments made by the State to the Teachers' Retirement System (TRS) increased by \$496,022 or 8.1%.

Allocations of the 2011 property tax levy and the preceding two levy years are as follows (per \$100 of assessed value):

<i>Fund Type</i>	<i>Levy Year</i>		
	<i>2011</i>	<i>2010</i>	<i>2009</i>
General (Educational)	2.0841	1.8402	1.3386
Operations & Maintenance	0.2600	0.2062	0.1783
Transportation	0.0129	0.0114	0.0000
Municipal Retirement	0.0509	0.0449	0.0208
Social Security	0.0509	0.0449	0.0303
Working Cash	0.0058	0.0051	0.0137
Debt Service	0.0797	0.0707	0.0612
Tort Immunity	0.0603	0.0383	0.0280
Life Safety	-	0.0383	0.0352
Special Education	<u>0.0148</u>	<u>0.0131</u>	<u>0.0097</u>
Total Tax Rate	<u>2.6194</u>	<u>2.3131</u>	<u>1.7158</u>
Collection/Levy	<u>51.7%</u>	<u>98.8%</u>	<u>97.8%</u>

The expenditures of the major functions of all governmental fund types increased by \$371,643 from the prior fiscal year. This represents a percentage increase of 0.7%. Variances in levels of expenditures for major functions of the District over the preceding year are shown in the following tabulation:

<i>Expenditures</i>	<i>2012 Amount (\$000)</i>	<i>Percent of Total</i>	<i>Increase (Decrease) from 2011 (\$000)</i>	<i>Percentage Increase (Decrease) from 2011</i>
<b><u>Function</u></b>				
Instruction	\$33,817	58.9%	\$407	1.2%
Support Services	18,721	32.6%	817	4.6%
Debt Service	2,231	3.9%	182	8.9%
Capital Outlay	1,295	2.3%	(1,224)	(48.6%)
Non-programmed Charges	<u>1,323</u>	<u>2.3%</u>	<u>190</u>	<u>16.8%</u>
TOTAL EXPENDITURES	<u>\$57,387</u>	<u>100.0%</u>	<u>\$372</u>	<u>0.6%</u>

Although the overall increase is minimal at 0.6%, there is a notable decrease of 48.6% in capital outlay. Fiscal Year 2012 is year three of the Life Safety project, which nearly completes the outstanding Life Safety list.

Under separate collective bargaining agreements with the teachers' and support staff unions, actual labor costs increased slightly by 0.09% in Fiscal Year 2012. Salaries account for 56.4% of total operating expenditures and 65.5% of General (Educational) Fund expenditures.

### **CAPITAL ASSETS**

The capital assets of the District are those assets used in the performance of general governmental functions. As of June 30, 2012, the District's capital assets, net of accumulated depreciation, amounted to \$35.8 million. This amount represents the actual and estimated original cost of the assets and is considerably less than their present replacement value.

Depreciation of capital assets is shown in order to satisfy the compliance with Governmental Accounting Standards Board Statement Number 34, Basic Financial Statements – and Management's Discussion and Analysis – for State and Local Governments but is generally not recognized in the District's accounting system. The District utilizes the assistance of an outside appraisal service for the appraisal, control and inventory of fixed assets. Although annual adjustments to inventory were made, a physical inventory had not been conducted since 2003. The appraisal service conducted a thorough physical inventory of the District's assets and equipment during the 2009-2010 Fiscal Year. This resulted in a reduction in value of capital assets in the amount of \$1,789,788. Annual updates to the inventory report will continue until the next physical inventory occurs.

Annual appraisals are used for the updating of replacement values for insurance purposes with the District providing historical cost information. The District participates in a property casualty insurance cooperative pool comprised of more than 60 school district members. The cooperative maintains a \$250,000 self-insured retention to insure losses up to \$1,000,000. Beyond that limit, outside third party specific and aggregate coverage is purchased to protect the District from severe financial losses.

### **ECONOMIC OUTLOOK**

The District's mature tax base is characterized by resident socioeconomic levels that are among the highest in the state and nation. In addition its strong financial operations are supported by ample reserves and manageable debt burden.

The District's fully developed and affluent tax base will continue to experience steady growth for the foreseeable future based on its desirable location on the North Shore of Lake Michigan. The District continues to maintain a solid tax base and still experience some growth, mostly through residential teardowns and reassessment. Resident socioeconomic indicators greatly exceed state and national levels.

The District maintains strong financial operations by implementing prudent fiscal policies, conservative management and maintaining ample reserves. The District ended FY 2012 with an Educational Fund balance of \$20.5 million, or an adequate 37.7% of Educational Fund revenues. Adding to the district's financial flexibility is a FY 2012 Working Cash Fund balance of \$0.4 million, contributing to a combined operating fund balance of 31.3 million. The district receives the majority of its operating revenues from property taxes (75.8% of FY 2012 revenues) followed by state and federal aid (17.7%). The District's goal is to sustain an operating fund balance (Educational, O&M, Transportation, IMRF & Social Security, Tort Immunity & Judgment and Working Cash) at a level equivalent to 30% of annual operating expenditures. In FY12, the level was 57.2%.

The Illinois General Assembly has imposed property tax legislation on all Cook County school districts. The legislation is designed to limit increases in property tax extensions. The limitation slows the growth of property tax revenues to school districts when property values and assessments are increasing faster than the rate of inflation. The legislation limits the levy increase to the lesser of five percent or the increase in the consumer price index (CPI) for the year preceding the levy year. This combined with the use of prior year equalized assessed valuation (EAV) generate property tax receipts. The use of the CPI and prior year EAV variables in property tax calculations is intended to “restrict” the amount of increase in a school district’s levy request.

The administration, in collaboration with teachers and the Board of Education, will continue to provide an exemplary educational experience for all students in the District 39 community. With that being said, district administration continues to analyze long-range forecast financial projections, which are used in prudent fiscal planning sessions with members of the Board of Education.

### **MAJOR INITIATIVES**

#### *Improvements to District Facilities*

The district had several capital improvement and life safety projects during the 2011-2012 school year. The following summarizes the projects by school:

##### Harper Elementary School

- Roof work

##### Highcrest Middle School

- Roof work

##### Wilmette Junior High School

- Fire alarm work
- Science addition/renovation work

### **INDEPENDENT AUDIT**

The School Code of Illinois and the District’s adopted policy require an annual audit of the books of accounts, financial records and transactions of all funds of the District. The audit is performed by independent certified public accountants selected by the District’s Board of Education. The independent auditors’ opinion has been included in the Financial Section of this report.

**ACKNOWLEDGEMENT**

It is our belief that this Comprehensive Annual Financial Report will provide the District's management, outside investors, and interested local citizens with a most meaningful financial condition as of June 30, 2012.

We extend our appreciation to the members of the Board of Education for their interest and support in planning and conducting the financial operations of the District in a responsible, progressive manner.

Respectfully Submitted,

---

Dr. Raymond E. Lechner  
Superintendent of Schools

---

Dr. Crystal S. LeRoy  
Business Manager

**WILMETTE PUBLIC SCHOOLS DISTRICT NO. 39**

**616 Locust Road  
Wilmette, Illinois 60091**

**Comprehensive Annual Financial Report  
Fiscal Year Ended June 30, 2012**

---

**Board of Education**

		<u>Term Expires</u>
Karen L. Donnan	President	2015
John M. Flanagan	Vice President	2013
Kimberly W. Alcantara	Member	2013
Pamela A. Davidson	Member	2013
Keith Dronen	Member	2015
Cindy Levine	Member	2013
Alice D. Schaff	Member	2015

**District Administration**

Dr. Raymond Lechner	Superintendent
Dr. Margaret Clauson	Assistant Superintendent
Dr. Crystal LeRoy	Business Manager
Mrs. Melanie Horowitz	Administrator for Curriculum
Dr. Denise Thrasher	Administrator for Student Services
Mr. Adam Denenberg	Director of Technology and Media Services

**Official Issuing Report**

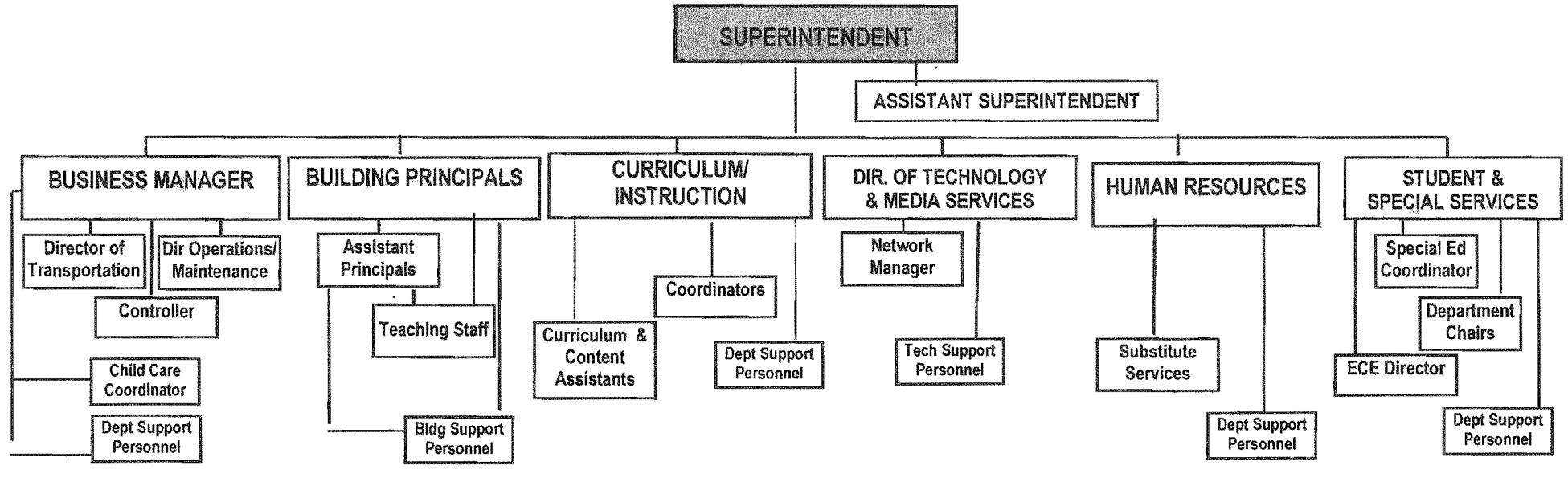
Dr. Crystal LeRoy  
Business Manager

**Department Issuing Report**

Business Office



**Wilmette Public Schools District 39**



**ADMINISTRATIVE FUNCTIONS**  
**Superintendent**

- ◆ Provide professional leadership in education throughout the school system. Represent the district in an official or public capacity.
- ◆ Establish and maintain a sound organizational structure which provides all essential functions of the school system.
- ◆ Direct the long-term planning of the educational program including assessment, curriculum development, revision and the adoption of new programs.
- ◆ Inform and advise the Board of Education relative to the educational program and school operations, prepare agendas, and serve as Secretary to the Board.
- ◆ Coordinate and direct the preparation of the annual school budget and continually appraise school plant needs.
- ◆ Coordinate and direct the employee selection process, salary administration and personnel benefits program.

<b>Business Manager</b>	<b>Building Level Administrators</b>	<b>Administrator for Curriculum/Instruction</b>	<b>Director of Technology and Media Services</b>	<b>Administrator for Human Resources</b>	<b>Administrator for Student &amp; Special Services</b>
<ul style="list-style-type: none"> <li>◆ Accounting/Auditing</li> <li>◆ Accounts Receivable/ Payable</li> <li>◆ Before School Child Care</li> <li>◆ Budget Management</li> <li>◆ Building and Grounds</li> <li>◆ Food Services</li> <li>◆ Investments</li> <li>◆ Life/Safety Management</li> <li>◆ Payroll</li> <li>◆ Rentals</li> <li>◆ Risk Management/ Insurance</li> <li>◆ Transportation</li> </ul>	<ul style="list-style-type: none"> <li>◆ Building Level Public Relations</li> <li>◆ Coordination of Building Special Services</li> <li>◆ Coordination with PTA/PTO</li> <li>◆ Home/School Communications</li> <li>◆ Oversight of Instruction</li> <li>◆ School-Improvement Planning</li> <li>◆ Selection of Employees</li> <li>◆ Site-based Facility Operations</li> <li>◆ Student Safety</li> <li>◆ Support Staff Evaluation</li> <li>◆ Teacher Evaluation</li> </ul>	<ul style="list-style-type: none"> <li>◆ Assessment Program</li> <li>◆ Curriculum Development</li> <li>◆ Curriculum Review</li> <li>◆ Gifted Education</li> <li>◆ Grant Coordination</li> <li>◆ Instructional Program</li> <li>◆ Research Coordination</li> <li>◆ School Improvement Process</li> <li>◆ Staff Development</li> </ul>	<ul style="list-style-type: none"> <li>◆ Instructional Technology</li> <li>◆ Technology Integration</li> <li>◆ Media Services</li> <li>◆ District LAN/WAN Operations</li> <li>◆ District Email Services</li> <li>◆ Information Systems</li> <li>◆ Data Management</li> <li>◆ Coordinates Building Technical Support</li> <li>◆ Hardware/Software Evaluation &amp; Maintenance</li> <li>◆ Technology Planning</li> <li>◆ Educational Technology Professional Development</li> <li>◆ Web Site Development &amp; Management</li> <li>◆ Content Filtering</li> </ul>	<ul style="list-style-type: none"> <li>◆ Contract Management</li> <li>◆ Employee Discipline/Due Process</li> <li>◆ Employee Evaluation</li> <li>◆ Grievance, Arbitration</li> <li>◆ Induction of New Employees</li> <li>◆ Personnel Planning</li> <li>◆ Policy Revision</li> <li>◆ Recruitment/Selection</li> <li>◆ Retirement/Recognition</li> <li>◆ Substitute Services</li> <li>◆ Title IX Coordination</li> </ul>	<ul style="list-style-type: none"> <li>◆ Student and Special Services</li> <li>◆ ISBE Approved Special Education Director</li> <li>◆ Health Services</li> <li>◆ ELL Services</li> <li>◆ Counseling Services</li> <li>◆ Home/Hospital Services</li> <li>◆ Private/Parochial School Services</li> <li>◆ Student Registration and Records</li> <li>◆ Wilmette Board of Health</li> <li>◆ Student Discipline and Truancy</li> <li>◆ ADA/504 Compliance Monitor</li> <li>◆ Safe Schools</li> <li>◆ Special Education Finance</li> </ul>

## Independent Auditors' Report

Board of Education  
Wilmette Public Schools District 39  
Wilmette, Illinois

We have audited the accompanying financial statements of the governmental activities, each major fund, and the aggregate remaining fund information of Wilmette Public Schools District 39 as of and for the year ended June 30, 2012, which collectively comprise the District's basic financial statements as listed in the table of contents. These financial statements are the responsibility of Wilmette Public Schools District 39's management. Our responsibility is to express opinions on these financial statements based on our audit.

We conducted our audit in accordance with auditing standards generally accepted in the United States of America and the standards applicable to financial audits contained in *Governmental Auditing Standards*, issued by the Comptroller General of the United States. Those standards require that we plan and perform the audit to obtain reasonable assurance about whether the financial statements are free of material misstatement. An audit includes examining, on a test basis, evidence supporting the amounts and disclosures in the financial statements. An audit also includes assessing the accounting principles used and significant estimates made by management, as well as evaluating the overall financial statement presentation. We believe that our audit provides a reasonable basis for our opinions.

In our opinion, the financial statements referred to above present fairly, in all material respects, the respective financial position of the governmental activities, each major fund, and the aggregate remaining fund information of Wilmette Public Schools District 39 as of June 30, 2012, and the respective changes in financial position for the year then ended, in conformity with accounting principles generally accepted in the United States of America.

In accordance with *Government Auditing Standards*, we have also issued our report dated October 3, 2012, on our consideration of the Wilmette Public Schools District 39's internal control over financial reporting and on our tests of its compliance with certain provisions of laws, regulations, contracts, and grant agreements and other matters. The purpose of that report is to describe the scope of our testing of internal control over financial reporting and compliance and the results of that testing and not to provide an opinion on the internal control over financial reporting or on compliance. That report is an integral part of an audit performed in accordance with *Government Auditing Standards* and should be considered in assessing results of our audit.

Accounting principles generally accepted in the United States of America require, that the management's discussion and analysis, budgetary comparison information and required supplementary information be presented to supplement the basic financial statements. Such information, although not a part of the basic financial statements, is required by the Governmental Accounting Standards Board, who considers it to be an essential part of financial reporting for placing

## Board of Education

the basic financial statements in an appropriate operational economic, or historical context. We have applied certain limited procedures to the required supplementary information in accordance with auditing standards generally accepted in the United States of America, which consisted of inquiries of management about the methods of preparing the information and comparing the information for consistency with management's response to our inquiries, the basic financial statements, and other knowledge we obtained during our audit of the basic financial statements. We do not express an opinion or provide any assurance on the information because the limited procedures do not provide us with sufficient evidence to express an opinion or provide any assurance.

Our audit was conducted for the purpose of forming opinions on the financial statements that collectively comprise the Wilmette Public Schools District 39's basic financial statements. The introductory section, combining and individual nonmajor fund financial statements, and statistical tables are presented for purposes of additional analysis and are not a required part of the basic financial statements. The combining and individual nonmajor fund financial statements are the responsibility of management and were derived from and relate directly to the underlying accounting and other records used to prepare the financial statements. The information has been subjected to the auditing procedures applied in the audit of the financial statements and certain additional procedures, including comparing and reconciling such information directly to the underlying accounting and other records used to prepare the financial statements or to the financial statements themselves, and other additional procedures in accordance with auditing standards generally accepted in the United States of America. In our opinion, the information is fairly stated in all material respects in relation to the financial statements as a whole. We have also previously audited, in accordance with auditing standards generally accepted in the United States, the Wilmette Public Schools District 39's basic financial statements for the year ended June 30, 2011, which are not presented with the accompanying financial statements. In our report dated October 3, 2011, we expressed unqualified opinions on the respective financial statements of the governmental activities, each major fund, and the aggregate remaining fund information. That audit was conducted for the purpose of forming opinions on the financial statements that collectively comprise the Wilmette Public Schools District 39's financial statements as a whole. The combining and individual major fund financial statements, related to the 2011 financial statements are presented for purposes of additional analysis and are not a required part of the financial statements. Such information is the responsibility of management and was derived from and relates directly to the underlying accounting and other records used to prepare the 2011 financial statements. The information has been subjected to the auditing procedures applied in the audit of those financial statements and certain additional procedures, including comparing and reconciling such information directly to the underlying accounting and other records used to prepare the financial statements or to the financial statements themselves, and other additional procedures in accordance with auditing standards generally accepted in the United States of America. In our opinion, the 2011 combining and individual nonmajor fund financial statements are fairly stated in all material respects in relation to the basic financial statements from which they have been derived. The introductory section and statistical sections have not been subjected to the auditing procedures applied in the audit of the basic financial statements and, accordingly, we do not express an opinion or provide assurance on it.



Klein, Hall & Associates, LLC  
Aurora, Illinois  
October 3, 2012

# **Wilmette Public Schools District 39**

## **Management's Discussion and Analysis**

### **For the Year Ended June 30, 2012**

---

The discussion and analysis of Wilmette Public Schools District 39's (the District) financial performance provides an overall review of the District's financial activities for the year ended June 30, 2012. The management of the District encourages readers to consider the information presented herein in conjunction with the basic financial statements to enhance their understanding of the District's financial performance. All amounts, unless otherwise indicated, are expressed in millions of dollars. Certain comparative information between the current year and the prior is required to be presented in the Management's Discussion and Analysis (the "MD&A").

#### **Financial Highlights**

- For the tenth year in a row, the District will retain the ISBE's highest financial rating. Financial recognition, for FY12 and its overall weighted score improved to 4.00 on a 4-point scale.
- General revenues accounted for \$50.4 or 78.5% of total revenue. General revenues consisted of property tax revenues of \$48.7, other local revenues of \$0.4 and Federal and State aid not restricted to specific purposes of \$1.3.
- The District had \$57.3 in expenses related to government activities, of which, \$13.8 were offset by program specific charges, grants and contributions.
- The District committed just under \$0.8 for Life Safety projects in the coming year.
- The District's long-term debt margin remains a healthy 89.5% for FY12 with an accessible debt capacity of \$108.8.
- The District made a transfer from the Fire Prevention & Safety Fund to the Debt Service Fund for \$0.4 to cover debt principal and interest payments. The District also permanently transferred \$0.4 from the Operations and Maintenance Account to the Debt Service Fund to cover debt principal and interest payments.

#### **Overview of the Financial Statements**

This discussion and analysis are intended to serve as an introduction to the District's basic financial statements. The basic financial statements are comprised of three components:

- Government-wide financial statements
- Fund financial statements
- Notes to the financial statements

This report also contains other supplementary information in addition to the basic financial statements.

#### ***Government-wide financial statements***

The government-wide financial statements are designed to provide readers with a broad overview of the District's finances, in a manner similar to a private-sector business.

# **Wilmette Public Schools District 39**

## **Management's Discussion and Analysis**

### **For the Year Ended June 30, 2012**

---

The statement of net assets presents information on all of the District's assets and liabilities, with the difference between the two reported as net assets. Over time, increases or decreases in net assets may serve as a useful indicator of whether the financial position of the District is improving or deteriorating. The statement of activities presents information showing how the government's net assets changed during the fiscal year being reported. All changes in net assets are reported as soon as the underlying event giving rise to the change occurs, regardless of the timing of related cash flows. Thus, revenues and expenses are reported in this statement for some items that will only result in cash flows in future fiscal periods.

The government-wide financial statements present the functions of the District that are principally supported by taxes and intergovernmental revenues (governmental activities). With the exception of the district's summer school enrichment program, the District has no business-type activities; that is, functions that are intended to recover all or a significant portion of their costs through user fees and charges. The District's governmental activities include instructional services (regular education, special education and other), supporting services, operation and maintenance of facilities and transportation services.

#### ***Fund financial statements***

A fund is a grouping of related accounts that is used to maintain control over resources that have been segregated for specific activities or objectives. The District uses fund accounting to ensure and demonstrate compliance with finance-related legal requirements. All of the funds of the District can be divided into two categories: governmental funds and fiduciary funds (the District maintains no proprietary funds).

Governmental funds are used to account for essentially the same functions reported as governmental activities in the government-wide financial statements. However, unlike the government-wide financial statements, governmental fund financial statements focus on near-term inflows and outflows of spendable resources, as well as on balances of spendable resources available at the end of the fiscal year. Such information may be useful in evaluating a school district's near-term financing requirements.

Because the focus of governmental funds is narrower than that of the government-wide financial statements, it is useful to compare the information presented for governmental funds with similar information presented for governmental activities in the government-wide financial statements. By doing so, readers may better understand the long-term impact of the government's near-term financing decisions. Both the governmental fund balance sheet and the governmental fund statement of revenues, expenditures and changes in fund balances provide a reconciliation to facilitate this comparison between governmental funds and governmental activities.

**Wilmette Public Schools District 39**  
**Management's Discussion and Analysis**  
**For the Year Ended June 30, 2012**

---

The District maintains eight individual governmental funds. Information is presented separately in the governmental fund balance sheet and in the governmental fund statement of revenues, expenditures and changes in fund balances for the General Fund and Debt Service Funds, which are considered to be major funds. The Transportation, Municipal Retirement, Working Cash, Tort Immunity and Fire Prevention and Safety Fund are considered non-major funds.

The District adopts an annual budget for each of the funds listed above. A budgetary comparison schedule has been provided for each fund to demonstrate compliance with this budget.

Fiduciary funds are used to account for resources held for the benefit of parties outside the school district. Fiduciary funds are not reflected in the government-wide financial statement because the resources of those funds are not available to support the District's own programs. The accounting used for fiduciary funds is much like that of government-wide financial statements.

***Notes to the financial statements***

The notes to the financial statements provide additional information that is essential to a full understanding of the data provided in the government-wide and fund financial statements.

***Other information***

In addition to the basic financial statement and accompanying notes, this report also presents certain required supplementary information concerning the District's progress in funding its obligation to provide pension benefits to its non-certified employees and other post employment benefits.

**Wilmette Public Schools District 39**  
**Management's Discussion and Analysis**  
**For the Year Ended June 30, 2012**

---

**Government-Wide Financial Analysis**

Net Assets: The District's total assets are \$97.6, total liabilities are \$53.9 and the total net assets for the year ending June 30, 2012 are \$43.7. (See Table 1)

<b>Table 1</b>			
<b>Condensed Statement of Net Assets</b>			
<i>(in millions of dollars)</i>			
	<u>2012</u>	<u>2011</u>	
<b>Assets:</b>			
Current assets	\$ 61.4	\$ 49.4	
Other assets	0.4	0.3	
Capital assets	35.8	36.6	
Total assets	<u>97.6</u>	<u>86.3</u>	
<b>Liabilities:</b>			
Current liabilities	26.9	30.0	
Long-term debt outstanding	27.0	19.6	
Total liabilities	<u>53.9</u>	<u>49.6</u>	
<b>Net assets:</b>			
Invested in capital assets, net of related debt	17.8	18.1	
Restricted	4.0	4.1	
Unrestricted	21.9	14.5	
Total net assets	<u>\$ 43.7</u>	<u>\$ 36.7</u>	

**Wilmette Public Schools District 39**  
**Management's Discussion and Analysis**  
**For the Year Ended June 30, 2012**

Changes in net assets: The District's net assets increased by \$6.9 due to a increase in general revenues. (See Table 2)

<b>Table 2</b>		
<b>Changes in Net Assets</b>		
<i>(in millions of dollars)</i>		
	2012	2011
<b>Revenue:</b>		
Program revenues:		
Charges for services	\$ 3.7	\$ 3.4
Operating grants & contributions	10.1	9.7
General revenues:		
Taxes	48.7	37.3
General state aid	1.3	1.3
Other	0.4	0.5
Total revenues	\$ 64.2	\$ 52.2
<b>Expenses:</b>		
Instruction	36.5	35.7
Pupil & instructional services	4.0	4.2
Administration & business	6.5	6.0
Transportation	1.1	1.2
Operations and maintenance	4.2	4.1
Other	5.0	4.1
Total expenses	57.3	55.3
<b>Increase (decrease) in net assets</b>	<b>\$ 6.9</b>	<b>\$ (3.1)</b>

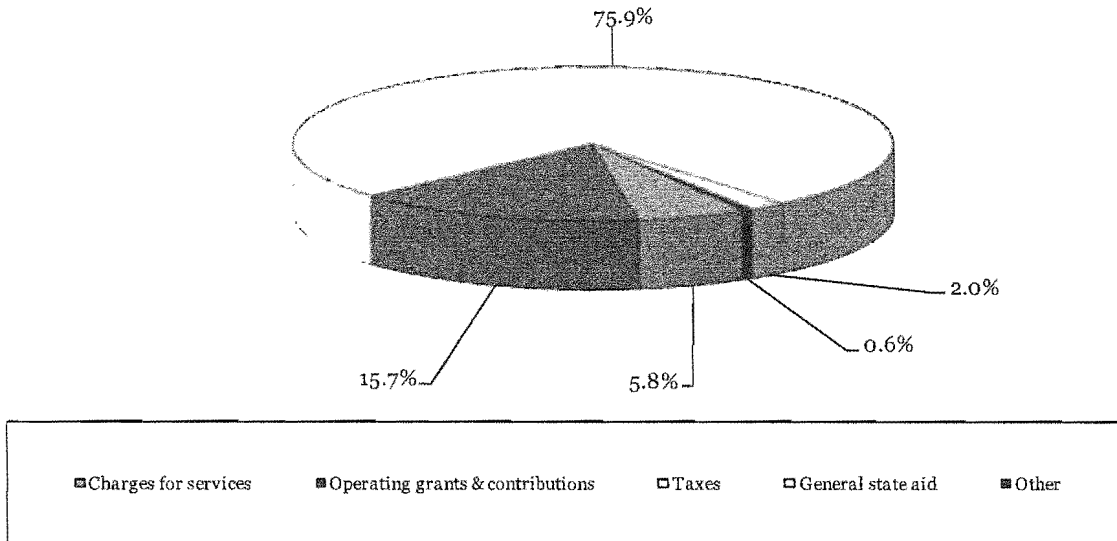
Property taxes accounted for most of the District's revenue, contributing about 76 cents of every dollar raised. The remainder comes from restricted and unrestricted state and federal, fees charged for services and miscellaneous sources. The total cost of all programs and services was \$57.3. The District's expenses are predominantly (72.6%) related to instruction, pupil services and transportation of students.



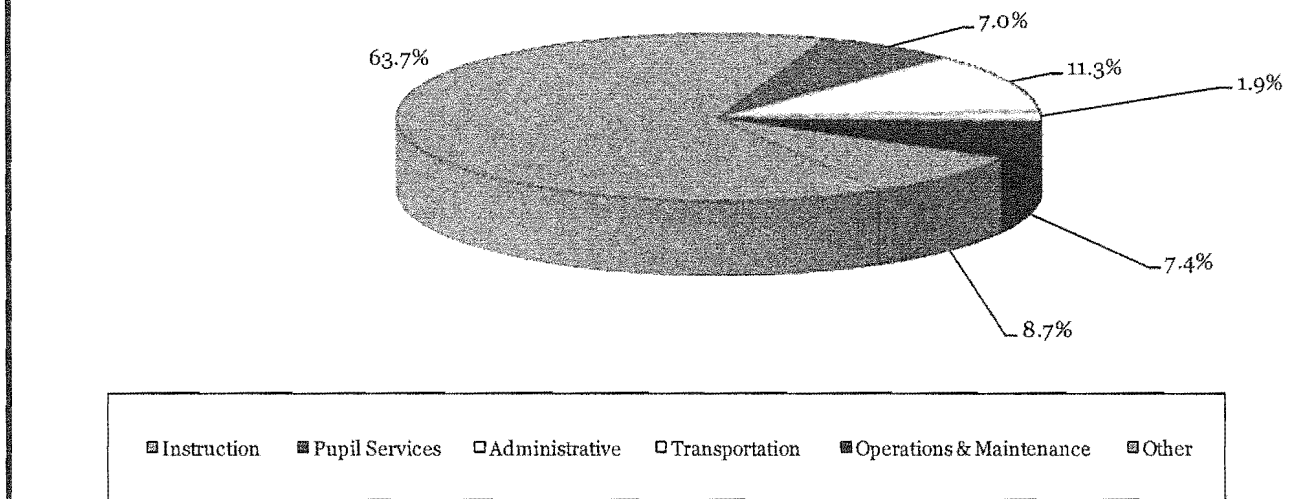
**Wilmette Public Schools District 39**  
**Management's Discussion and Analysis**  
**For the Year Ended June 30, 2012**

---

**Government-Wide Revenues by Source**



**Government-Wide Expenditures by Function**



# **Wilmette Public Schools District 39**

## **Management's Discussion and Analysis**

### **For the Year Ended June 30, 2012**

---

#### **Financial Analysis of the District's Funds**

The statement of net assets includes capital assets and long-term liabilities and therefore presents a financial picture that is different from the traditional modified accrual statements. As the District completed the year, the ending fund balance in all funds was \$34.6, a \$15.1 increase for the year.

#### **General (Educational) Fund**

FY12 Educational Fund revenue exceeded expenditures by \$8.2. Local revenues increased by \$10.9 or 33.8% compared to last year. State educational aid increased by 2.5% and federal aid increased 3.7% over 2011. Overall expenditures contributed to the enhancements of the instructional programs, negotiated certified staff salary increased, rising costs in health insurance premiums, and technology improvements. General (Educational) Fund expenditures increased 2.2% resulting in a year-end fund balance of \$20.5.

#### **Tort Immunity Fund**

In FY12, the Tort Immunity Fund revenues were \$0.9 and expenditures were \$0.8 resulting in a year-end fund balance of \$0.0.

#### **Operations and Maintenance Fund**

In FY12, the Operations and Maintenance Fund revenues were \$4.4 and expenditures were \$4.1, resulting to a year-end fund balance of \$9.8, after taking into account other financing sources of \$7.1.

#### **Transportation Fund**

Overall, the FY12 Transportation Fund expenditures exceeded revenues by \$0.1. Revenue increased by \$18.8% primarily due to property tax receipts. Expenditures increased by 10.9% primarily due to an increase in salaries and purchased services in FY12.

#### **Illinois Municipal Retirement Fund**

The Municipal Retirement/Social Security Fund revenues exceeded expenditures by \$0.3 resulting in a year end fund balance of \$0.4.

#### **Working Cash Fund**

The Working Cash Fund received \$0.1 in tax levy proceeds and interest income. The District uses Working Cash Funds to help support operations through interfund transfers and loans when necessary. The ending fund balance for FY12 was \$0.4.

**Wilmette Public Schools District 39**  
**Management's Discussion and Analysis**  
**For the Year Ended June 30, 2012**

---

**Debt Service Fund**

The Debt Service Fund had an excess of revenues and other financing sources over expenditures of \$0.8 and ended with a balance of \$2.4.

**Fire Prevention and Life Safety Fund**

In FY11, the issuance of \$5.1 in long-term debt obligations provided the Fire Prevention and Life Safety Fund the necessary resources to complete designated Life Safety Projects identified through the 10-year Life Safety Survey. The ending fund balance at FY12 was \$1.0.

**Capital Asset and Debt Administration**

*Capital assets*

The District's capital assets consist of a total investment of \$74.9 (\$35.8 net of accumulated depreciation). Total depreciation expense for the year was \$3.1. More detailed information about capital assets can be found in Note 5 to the basic financial statements.

<b>Table 3</b>				
<b>Capital Assets (net of depreciation)</b>				
<i>(in millions of dollars)</i>				
	2012		2011	
	\$		\$	
Land	\$	0.6	\$	0.6
Land improvements		1.9		2.0
Buildings		29.5		29.9
Vehicles & Equipment		3.8		4.1
Total	\$	35.8	\$	36.6

**Wilmette Public Schools District 39**  
**Management's Discussion and Analysis**  
**For the Year Ended June 30, 2012**

---

*Long-term debt*

In 2012 the District issued \$8.6 and retired \$2.4 in bonds and debt certificates. At the end of fiscal year 2012, the District had a debt margin of \$108.8. More detailed information can be found in Note 6 of the basic financial statements.

	2012		2011	
General obligation bonds	\$	15.7	\$	15.6
Debt certificates & other		11.3		4.0
<b>Total</b>	<b>\$</b>	<b>27.0</b>	<b>\$</b>	<b>19.6</b>

**ISBE Financial Profile**

The Illinois State Board of Education evaluated the financial integrity of all public school districts based on five standard indicators: operational balance-to-revenue ratio, operational expenditure-to-revenue ratio, operational cash-on-hand, short term debt capacity and long term debt capacity. These scores are weighted and summed to yield a total profile score.

<b>Indicator</b>	<b>Value</b>	<b>Rating</b>	<b>Weighting</b>	<b>District Score</b>	<b>Max Possible</b>
Fund balance to revenue	58.0%	4	0.35	1.40	1.40
Expenses to revenue	84.0%	4	0.35	1.40	1.40
Cash on hand	286.04 days	4	0.1	0.40	0.40
Short term debt remaining	100.00%	4	0.1	0.40	0.40
Long term debt remaining	79.5%	4	0.1	0.40	0.40
<b>Total</b>				<b>4.00</b>	<b>4.00</b>

The District's total profile score last year was 3.55 out of a possible 4.00. The projected score for FY12 is 4.00 out of a possible 4.00. Based on this state formula, the District will continue to be placed in the ISBE's highest category, "Recognition", for financial integrity. In the previous 9 years, the District has scored 4.00 in all but FY04, FY06, FY08, FY09, FY10 and FY11 when it received a 3.55.

# **Wilmette Public Schools District 39**

## **Management's Discussion and Analysis**

### **For the Year Ended June 30, 2012**

---

#### **Factors Bearing on the District's Future**

At the time these financial statements were prepared and audited, the District was aware of the following circumstances that may significantly affect its financial health in the future:

- Since 1995, the District has been subject to tax cap legislation. This legislation severely limits the ability of the District to increase revenues proportionate to the increase in expenditures. The increase in expenditures are due to such factors as the expansion of instructional programming to meet the needs of the students, rising health care costs, contributed implementation of technology and facility needs. Balancing future budgets will continue to be a difficult challenge.
- The District's certified staff contract went into effect in fiscal year 2009 and will directly affect instructional expenditures through fiscal year 2013.
- The District's support staff negotiated a new contract that will take effect in fiscal year 2013. The four-year contract will directly influence expenditure patterns through fiscal year 2016.
- Refunds from property tax appeals continue to have a negative effect on net local property tax revenue receipts.
- For fiscal year 2013, the District is closely watching the outcome of the State of Illinois' pension reform. Although no action has yet been taken, the State is deciding whether to shift some or all of the responsibility for funding of teachers' pensions to the local school districts. The State is expected to contribute approximately \$7 million to pensions for District 39 teachers for FY13. The State's decision could significantly change the District's financial position.

#### **Requests for Information**

This financial report is designed to provide the District's citizens, taxpayers, and creditors with a general overview of the District's finances and to demonstrate the District's accountability for the money it receives. If you have questions about this report, or need additional financial information, contact the Business Office:

Wilmette Public Schools District 39  
Mikaelian Education Center  
615 Locust Road  
Wilmette, IL 60091  
(847) 256-2450

**WILMETTE PUBLIC SCHOOLS DISTRICT 39**  
**STATEMENT OF NET ASSETS**  
**JUNE 30, 2012**

	Governmental Activities
<b>Assets:</b>	
Cash and investments	\$ 39,522,223
Receivables:	
Property taxes	21,807,570
Due from other governments	114,314
Other	430
Prepaid items	108,151
Deferred charges	300,394
Capital assets:	
Land and construction in progress	610,765
Other capital assets, net of depreciation	35,191,458
 Total Assets	 97,655,305
<b>Liabilities:</b>	
Accounts payable	387,147
Accrued salaries and related expenditures	3,913,952
Unearned revenue	22,639,373
Noncurrent liabilities:	
Due within one year	1,505,000
Due in more than one year	25,537,339
	53,982,811
<b>Net Assets:</b>	
Invested in capital assets, net of related debt	17,836,863
Restricted for:	
Debt service	2,390,491
Transportation	159,967
Retirement	430,920
Capital projects	979,589
Unrestricted	21,874,664
 Total net assets	 \$ 43,672,494

See accompanying notes to basic financial statements

**WILMETTE PUBLIC SCHOOLS DISTRICT 39**  
**STATEMENT OF ACTIVITIES**  
**YEAR ENDED JUNE 30, 2012**

<u>Functions</u>	<u>Expenses</u>	<u>Program Revenues</u>			Net (Expense)
		<u>Charges for</u>	<u>Operating</u>	<u>Capital</u>	<u>Total</u>
		<u>Services</u>	<u>Grants and</u>	<u>Grants and</u>	<u>Governmental</u>
			<u>Contributions</u>	<u>Contributions</u>	<u>Activities</u>
<b>Governmental Activities:</b>					
Instructional services:					
Regular programs	\$ 28,708,543	\$ 1,390,709	\$ 6,823,451	\$ -	\$ (20,494,383)
Special programs	7,828,925	423,245	3,040,135	-	(4,365,545)
Support services:					
Pupils	2,766,716	-	-	-	(2,766,716)
Instructional staff	1,247,151	-	-	-	(1,247,151)
General administration	2,281,876	-	-	-	(2,281,876)
School administration	1,722,007	-	-	-	(1,722,007)
Business	2,495,021	1,277,092	40,970	-	(1,176,959)
Operation and maintenance					
of facilities	4,151,168	70,655	-	-	(4,080,513)
Transportation	1,062,885	546,040	206,602	-	(310,243)
Central	2,528,137	-	-	-	(2,528,137)
Other	427,948	-	-	-	(427,948)
Community Services	97,760	-	-	-	(97,760)
Non programmed charges	1,225,694	-	-	-	(1,225,694)
Interest on long-term liabilities	721,290	-	-	-	(721,290)
Total school district	<u>\$ 57,265,121</u>	<u>\$ 3,707,741</u>	<u>\$ 10,111,158</u>	<u>\$ -</u>	<u>(43,446,222)</u>
<b>General revenues:</b>					
Property taxes levied for:					
General purposes					39,665,909
Specific purposes					7,626,065
Debt service					1,399,298
Federal and state aid not restricted to specific purposes					1,251,909
Earnings on investments					13,378
Miscellaneous					435,784
					<u>50,392,343</u>
					6,946,121
					<u>36,726,373</u>
					<u>\$ 43,672,494</u>

See accompanying notes to basic financial statements

**WILMETTE PUBLIC SCHOOLS DISTRICT 39**  
**BALANCE SHEET**  
**GOVERNMENTAL FUNDS**  
**JUNE 30, 2012**

<u>ASSETS</u>	<u>General</u>	<u>Debt Service</u>	<u>Other Governmental Funds</u>	<u>Total Governmental Funds</u>
<b>Assets:</b>				
Cash and investments	\$ 35,075,441	\$ 2,390,465	\$ 2,056,317	\$ 39,522,223
Receivables:				
Property taxes	20,187,029	663,470	957,071	21,807,570
Due from other governments	114,314	-	-	114,314
Due from other funds	97,000	-	-	97,000
Other	383	26	21	430
Prepaid Items	108,151	-	-	108,151
<b>TOTAL ASSETS</b>	<b><u>\$ 55,582,318</u></b>	<b><u>\$ 3,053,961</u></b>	<b><u>\$ 3,013,409</u></b>	<b><u>\$ 61,649,688</u></b>
<b><u>LIABILITIES AND FUND BALANCES</u></b>				
<b>Liabilities:</b>				
Accounts payable	\$ 198,500	\$ -	\$ 188,647	\$ 387,147
Accrued salaries and related expenditures	3,857,246	-	56,706	3,913,952
Due to other funds	97,000	-	-	97,000
Deferred revenue	20,778,323	663,470	1,197,580	22,639,373
<b>Total Liabilities</b>	<b><u>24,931,069</u></b>	<b><u>663,470</u></b>	<b><u>1,442,933</u></b>	<b><u>27,037,472</u></b>
<b>Fund Balances:</b>				
Nonspendable	108,151	-	-	108,151
Restricted - reported in special revenue funds	-	-	590,887	590,887
Restricted - reported in capital projects funds	-	-	979,589	979,589
Restricted - reported in debt service funds	-	2,390,491	-	2,390,491
Unassigned	30,543,098	-	-	30,543,098
<b>Total Fund Balances</b>	<b><u>30,651,249</u></b>	<b><u>2,390,491</u></b>	<b><u>1,570,476</u></b>	<b><u>34,612,216</u></b>
<b>TOTAL LIABILITIES AND FUND BALANCES</b>	<b><u>\$ 55,582,318</u></b>	<b><u>\$ 3,053,961</u></b>	<b><u>\$ 3,013,409</u></b>	<b><u>\$ 61,649,688</u></b>

See accompanying notes to basic financial statements



**WILMETTE PUBLIC SCHOOLS DISTRICT 39**  
**RECONCILIATION OF THE BALANCE SHEET OF GOVERNMENTAL FUNDS**  
**TO THE STATEMENT OF NET ASSETS**  
**JUNE 30, 2012**

---

<b>Total fund balances - governmental funds</b>	<b>\$ 34,612,216</b>
Amounts reported for governmental activities in the statement of net assets are different because:	
Capital assets used in governmental activities are not financial resources, and therefore, are not reported in the funds. The cost of the assets is \$74,854,121 and the accumulated depreciation is \$39,051,898.	35,802,223
Deferred charges included in the statement of net assets are not available to pay for current period expenditures and accordingly, are not included in the governmental funds balance sheet.	300,394
Long-term liabilities, including bonds payable, are not due and payable in the current period and therefore are not reported in the funds.	
Long-term debt	(25,480,360)
Net pension obligation - IMRF	(166,111)
Other postemployment benefits	(1,395,868)
<b>Net assets of governmental activities</b>	<b><u>\$ 43,672,494</u></b>

See accompanying notes to basic financial statements

**WILMETTE PUBLIC SCHOOLS DISTRICT 39**  
**STATEMENT OF REVENUES, EXPENDITURES AND CHANGES IN FUND BALANCES**  
**GOVERNMENTAL FUNDS**  
**YEAR ENDED JUNE 30, 2012**

	General	Debt Service	Other Governmental Funds	Total Governmental Funds
<b>REVENUES</b>				
Local sources	\$ 48,545,692	\$ 1,399,979	\$ 2,902,504	\$ 52,848,175
State sources	9,859,341	-	206,602	10,065,943
Federal sources	1,297,124	-	-	1,297,124
<b>Total Revenues</b>	<b>59,702,157</b>	<b>1,399,979</b>	<b>3,109,106</b>	<b>64,211,242</b>
<b>EXPENDITURES</b>				
Current operating:				
Instruction	33,096,967	-	719,451	33,816,418
Supporting services	16,648,680	-	2,072,843	18,721,523
Community services	90,219	-	7,541	97,760
Non-programmed charges	1,225,694	-	-	1,225,694
Debt service				
Principal	-	1,405,000	-	1,405,000
Interest and other	-	825,490	-	825,490
Capital Outlay	-	-	1,295,148	1,295,148
<b>Total Expenditures</b>	<b>51,061,560</b>	<b>2,230,490</b>	<b>4,094,983</b>	<b>57,387,033</b>
Excess (deficiency) of revenues over expenditures	8,640,597	(830,511)	(985,877)	6,824,209
<b>OTHER FINANCING SOURCES (USES)</b>				
Principal on bond sales	7,500,000	1,065,000	-	8,565,000
Premium on bond sales	-	773,114	-	773,114
Other uses	-	(1,032,281)	-	(1,032,281)
Transfers in	-	799,100	-	799,100
Transfers out	(412,500)	-	(386,600)	(799,100)
<b>Total other financing sources (uses)</b>	<b>7,087,500</b>	<b>1,604,933</b>	<b>(386,600)</b>	<b>8,305,833</b>
Net change in fund balances	15,728,097	774,422	(1,372,477)	15,130,042
Fund balances at beginning of year	14,923,152	1,616,069	2,942,953	19,482,174
<b>FUND BALANCES AT END OF YEAR</b>	<b>\$ 30,651,249</b>	<b>\$ 2,390,491</b>	<b>\$ 1,570,476</b>	<b>\$ 34,612,216</b>

See accompanying notes to basic financial statements

**WILMETTE PUBLIC SCHOOLS DISTRICT 39**  
**RECONCILIATION OF THE STATEMENT OF REVENUES, EXPENDITURES AND**  
**CHANGES IN FUND BALANCES OF GOVERNMENTAL FUNDS TO THE STATEMENT OF ACTIVITIES**  
**YEAR ENDED JUNE 30, 2012**

---

**Net change in fund balances - total governmental funds** **\$ 15,130,042**

Amounts reported for governmental activities in the statement of activities are different because:

Governmental funds report capital outlays as expenditures. However, in the statement of activities, assets with an initial, individual cost of more than \$1,500 are capitalized and the cost is allocated over their estimated lives and reported as depreciation expense. This is the amount by which capital outlays exceeded depreciation in the current period.

Capital outlays	\$ 2,253,265	
Depreciation expense	<u>(3,107,924)</u>	(854,659)

Some items reported in the statement of activities do not require the use of current financial resources and therefore are not reported as expenditures in the governmental funds. These activities consist of:

Increase in net pension obligation - IMRF	\$ (166,111)	
Increase in other postemployment benefits	<u>(366,518)</u>	(532,629)

The governmental funds record bond and loan proceeds as other financing sources, while repayment of bond and loan principal is reported as an expenditure. Also, governmental funds report the effect of issuance costs and premiums when debt is first issued, whereas these amounts are deferred and amortized in the statement of activities. The net effect of these differences in the treatment of bonds and loans and related items is as follows:

Bond proceeds	\$ (8,565,000)	
Premium on bond proceeds	(773,114)	
Issuance costs on bond proceeds	129,274	
Bonds defeased	1,025,000	
Deferred loss on bonds defeased	7,281	
Repayment of bond and loan principal	1,405,000	
Bond premium amortization	23,641	
Bond discount amortization	(3,484)	
Deferred refunding amortization	(22,305)	
Deferred charges amortization	<u>(22,926)</u>	<u>(6,796,633)</u>

**Change in net assets of governmental activities** **\$ 6,946,121**

**WILMETTE PUBLIC SCHOOLS DISTRICT 39**  
**STATEMENT OF FIDUCIARY ASSETS AND LIABILITIES**  
**AGENCY FUND - ACTIVITY FUNDS**  
**YEAR ENDED JUNE 30, 2012**

---

**Assets:**

Cash	<u>\$ 201,349</u>
------	-------------------

**Liabilities:**

Due to organizations	<u>\$ 201,349</u>
----------------------	-------------------

See accompanying notes to basic financial statements

## WILMETTE PUBLIC SCHOOLS DISTRICT 39

Notes To Financial Statements

June 30, 2012

---

### **NOTE 1. SUMMARY OF SIGNIFICANT ACCOUNTING POLICIES**

Wilmette Public School District 39 (the District) operates as a public school system governed by a seven member board. The District is organized under the School Code of the State of Illinois, as amended. The accounting policies of the District conform to accounting principles generally accepted in the United States of America, as applicable to local governmental units of this type. The following is a summary of the more significant accounting policies of the District:

#### **a. The Reporting Entity**

In evaluating how to define the District for financial reporting purposes, management has considered all potential component units. The decision to include or exclude a potential component unit in reporting entity is made by applying the criteria established by the Governmental Accounting Standards Board (GASB). The definition of a component unit is a legally separate organization for which the District is financially accountable and other organizations for which nature and significance of their relationship with the District are such that exclusion would cause the reporting entity's financial statements to be misleading or incomplete. The District is financially accountable if it appoints a voting majority of the organization's governing body and (1) it is able to impose its will on that organization or (2) there is a potential for the organization to provide specific financial benefits to, or impose specific financial burdens on, the District. The District also may be financially accountable if an organization is fiscally dependent on the District, regardless of whether the organization has (1) a separately elected governing board, (2) a governing board appointed by a higher level of government or (3) a jointly appointed board. There are no component units, as defined by GASB, which are included in the District's reporting entity. Even though there are local government agencies within the geographic area served by the District, such as the municipality, library and park district, these agencies have been excluded from the report because they are legally separate and the District is not financially accountable for them.

The District is not included as a component unit in any other governmental reporting entity, as defined by GASB pronouncements.

Joint Ventures - The District is also a member of the following organization:

- Wilmette County Special Education Agreement (see Note 12)

#### **b. Fund Accounting**

The accounts of the District are organized on the basis of funds. A fund is an independent fiscal and accounting entity with a self-balancing set of accounts. Fund accounting segregates funds according to their intended purpose and is used to aid management in demonstrating compliance with finance-related legal and contractual provisions. The minimum number of funds is maintained consistent with legal and managerial requirements. The following summarizes the fund types used by the District:

## WILMETTE PUBLIC SCHOOLS DISTRICT 39

Notes To Financial Statements (continued)

June 30, 2012

---

GASB statement No. 54 refined the definitions of various governmental funds. These updated definitions are incorporated into the following fund descriptions.

Governmental funds include the following fund types:

**General Fund** - The General Fund, which consists of the legally mandated Educational Account, Operations and Maintenance Account, Tort Immunity Account and Working Cash Account, is used to account for the revenues and expenditures, which are used in providing education in the District. It is used to account for all financial resources except those required to be accounted for in other funds.

**Educational Account** – These accounts are used for most of the instructional and administrative aspects of the District’s operations, as well as providing school lunch services to students. The revenue consists primarily of local property taxes, state government aid and student registration fees and lunch receipts from the District food service program.

**Operations and Maintenance Account** – These accounts are used for expenditures made for operation, repair and maintenance of District property. Revenue consists primarily of local property taxes.

**Tort Immunity Account** – This fund accounts for revenues and expenditures related to tort immunity. Revenue is primarily derived from local property taxes.

**Working Cash Account** – This fund accounts for financial resources held by the District to be used as loans for working capital requirements to any other fund for which taxes are levied. The Working Cash Account was established and has been used to respond to fluctuations in cash flow resulting from unpredictable property tax collections. The earnings of the fund are allowed to be transferred to another fund under the Illinois Compiled Statutes. The principal of the fund, accumulated from bond issues, can be used as a source from which the District borrows money to support temporary deficiencies in other funds, or may be partially or fully transferred to the General Fund’s Educational Account, upon Board approval.

**Special Revenue Funds** - Special Revenue Funds account for the proceeds of specific revenue sources (other than Debt Service and Capital Projects Funds) that are legally restricted to expenditures for specified purposes. The District's Special Revenue Funds are the Transportation and Municipal Retirement/Social Security Funds.

**Transportation Fund** – This fund accounts for the revenue and expenditures relating to student transportation, both to and from school. Revenue is derived primarily from local property taxes and state reimbursement grants.

## WILMETTE PUBLIC SCHOOLS DISTRICT 39

Notes To Financial Statements (continued)

June 30, 2012

---

**Municipal Retirement/Social Security Fund** – This fund accounts for the District’s portion of the pension contributions to the Illinois Municipal Retirement Fund for noncertified employees and social security contributions for applicable certified and noncertified employees. Revenue to finance the contributions is derived primarily from local property taxes.

**Debt Service Funds** - Debt service funds are used to account for and report financial resources that are restricted, committed, or assigned to expenditure for principal and interest. Debt service funds should be used to report resources if legally mandated. Financial resources that are being accumulated for principal and interest maturing in future years also should be reported in debt service funds.

**Debt Service Fund** - The Debt Service Fund accounts for the accumulation of resources for, and the payment of, general long-term debt principal, interest, and related costs. Since there are no legal requirements on bond indentures, which mandate that a separate fund be established for each bond issue, the District maintains one Debt Service Fund for all bond issues.

**Capital Projects Funds** - Capital projects funds are used to account for and report financial resources that are restricted, committed, or assigned to expenditure for capital outlays, including the acquisition or construction of capital facilities and other capital assets. Capital projects funds exclude those types of capital-related outflows financed by proprietary funds or for assets that will be held in trust for individuals, private organizations, or other governments.

**Fire Prevention and Safety Fund** – The Fire Prevention and Safety Fund accounts for financial resources to be used for acquisitions and construction projects, which qualify as Fire Prevention and Safety expenditures.

### **Fiduciary Fund Type**

**Agency Funds** - The Agency Funds (Activity Funds) account for assets held by the District in trustee capacity or as an agent for student organizations. These funds are custodial in nature (assets equal liabilities) and do not involve measurement of the results of operations. In accordance with GASB 34, fiduciary funds are not included in the government-wide financial statements.

The District reports the following funds as major governmental funds:

General Fund  
Debt Service Fund

Private-sector standards of accounting, and financial reporting issued prior to December 1, 1989, generally are followed in the government-wide financial statements to the extent that those standards do

## WILMETTE PUBLIC SCHOOLS DISTRICT 39

### Notes To Financial Statements (continued)

June 30, 2012

---

not conflict with or contradict guidance of the GASB. When both restricted and unrestricted resources are available for use, it is the District's policy to use restricted resources first, then unrestricted resources as they are needed.

The District has adopted a policy consistent with GASB Statement No. 34 to net the interfund receivables and payables for combined totals used to determine the major funds. Consequently, the interfund loan balances, which net to zero, are not utilized to determine major funds.

#### **c. Basis of Presentation – Governmental Funds Financial Statements**

The government-wide financial statements (i.e., the statement of net assets and the statement of activities) report information on all of the nonfiduciary activities of the District. For the most part, the effect of interfund activity has been removed from these statements. All of the District's operating activities are considered "governmental activities," that is, activities that are normally supported by taxes and intergovernmental revenue. The District has no operating activities that would be considered "business activities".

The statement of activities demonstrates the degree to which the direct expense of a given function or segment are offset by program revenues. Direct expenses are those that are clearly identifiable with a specific function. Program revenues include 1) charges to students or applicants who purchase, use, or directly benefit from goods, services, or privileges provided by a given function and 2) grants and contributions that are restricted to meeting the operational or capital requirements of a particular function. Taxes and other items not properly included among program revenues are reported instead as general revenues.

Separate financial statements are provided for governmental funds and fiduciary funds, even though the latter are excluded from the government-wide financial statements. Major individual governmental funds are reported as separate columns in the fund financial statements.

#### **d. Basis of Accounting/Measurement Focus**

The government-wide financial statements and fiduciary funds are reported using the economic resources measurement focus and the accrual basis of accounting. Revenues are recorded when earned and expenses are recorded when a liability is incurred, regardless of the timing of related cash flows. Property taxes are recognized as revenues in the year for which they are levied. Grants and similar items are recognized as revenue as soon as all eligibility requirements imposed by the provider have been met. Fiduciary fund reporting focuses on net assets and changes in net assets. The agency funds are custodial in nature (assets equal liabilities) and do not involve measurement of results of operations.

Government fund financial statements are reported using the current financial resources measurement focus and the modified accrual basis of accounting. Revenues are recognized as soon as they are both measurable and available. Revenues are considered to be available when they are collectible within the current period or soon enough thereafter to pay liabilities in the current period. For this purpose, the



## WILMETTE PUBLIC SCHOOLS DISTRICT 39

### Notes To Financial Statements (continued)

June 30, 2012

---

District considers revenues to be available if they are collected within 60 days of the current fiscal period. Expenditures generally are recorded when a liability is incurred, as under accrual accounting. However, debt service expenditures, as well as expenditures related to compensated absences, are recorded only when payment is due.

Interest associated with the current fiscal period is considered to be susceptible to accrual and so has been recognized as a revenue of the current period. All other revenue items are considered to be measurable and available only when the District receives the cash.

Private-sector standards of accounting, and financial reporting issued prior to December 1, 1989, generally are followed in the government-wide financial statements to the extent that those standards do not conflict with or contradict guidance of the GASB.

When both restricted and unrestricted resources are available for use, it is the District's policy to use restricted resources first, then unrestricted resources as they are needed.

#### **e. Deposits and Investments**

State statutes authorize the District to invest in obligations of the U.S. Treasury, certain highly rated commercial paper, corporate bonds, repurchase agreements, and State Treasurer's Investment Pool. Investments are stated at fair value, which is the market value as determined by published reports of such values.

#### **f. Receivables and Payables**

Transactions between funds that are representative of lending/borrowing arrangements outstanding at the end of the fiscal year are referred to as "due to/from other funds". These amounts are eliminated in the governmental activities column in the statement of net assets. Receivables are expected to be collected within one year.

#### **g. Revenues – Exchange and nonexchange transactions**

Revenue resulting from exchange transactions, in which each party gives and receives essentially equal value, is recorded on the accrual basis when the exchange takes place. On a modified accrual basis, revenue is recorded in the fiscal year in which the resources are measurable and become available. Available means that the resources will be collected within the current fiscal year or are expected to be collected soon enough thereafter to be used to pay liabilities of the current fiscal year. For the District, available means expected to be received within sixty days of fiscal year-end.

Non-exchange transactions, in which the District receives value without directly giving equal value in return, include property taxes, grants, entitlements and donations. On an accrual basis, revenue from property taxes is recognized in the fiscal year for which the taxes are levied. Revenue from grants, entitlements and donations is recognized in the fiscal year in which all eligibility requirements have been

## WILMETTE PUBLIC SCHOOLS DISTRICT 39

Notes To Financial Statements (continued)

June 30, 2012

---

satisfied. Eligibility requirements include timing requirements that specify the year when the resources are required to be used or the fiscal year when use is first permitted, matching requirements, in which the District must provide local resources to be used for a specified purpose, and expenditure requirements, in which the resources are provided to the District on a reimbursement basis. On a modified accrual basis, revenue from non-exchange transactions must also be available before it can be recognized.

Under the modified accrual basis, the following revenue sources are considered to be both measurable and available at fiscal year-end: property taxes, interest, grants, entitlements and student fees.

### **h. Deferred Revenue**

Governmental funds report deferred revenue in connection with receivables for revenues that are not considered to be available to liquidate liabilities of the current period. Property taxes levied for the subsequent year are not earned and cannot be used to liquidate liabilities of the current period. Governmental funds also defer revenue recognition in connection with resources that have been received, but not yet earned.

### **i. Property Tax Revenues**

The District must file its tax levy ordinance by the last Tuesday in December of each year. The District's 2011 levy ordinance was originally approved during the December 12, 2011 board. The District's property tax is levied each year on all taxable real property located in the District and it becomes a lien on the property on January 1 of that year. The owner of real property on January 1 in any year is liable for taxes of that year. The District's annual property tax levy is subject to two statutory limitations: Individual fund rate ceilings and the Property Tax Extension Limitation Act (PTELA).

The PTELA limitation is applied in the aggregate to the total levy (excluding certain levies for the repayment of debt). PTELA limits the increase in total taxes billed to the lesser of 5% or the percentage increase in the Consumer Price Index (CPI) for the preceding year. The amount can be exceeded to the extent there is "new growth" in the District's tax base. The new growth consists of new construction, annexations and tax increment finance district property becoming eligible for taxation.

Property taxes are collected by the County Collector/Treasurer, who remits to the District its share of collections. Taxes levied in one year become due and payable in two equal installments; the first due on March 1 and the second due on August 1 for property located in Cook County. Property taxes are normally collected by the District within 60 days of the respective installments dates. Due to the allocation method used, individual fund rates for Cook County may exceed the statutory limits; however, the combined extension is limited to the statutory rate limits extended on the combined equalized assessed valuation.

The 2011 property tax levy is recognized as a receivable in fiscal year 2012. The District considers that the first installment of the 2011 levy is to be used to finance operations in fiscal 2012. This District has

**WILMETTE PUBLIC SCHOOLS DISTRICT 39**

Notes To Financial Statements (continued)

June 30, 2012

---

determined that the second installment of the 2011 levy is to be used to finance operations in fiscal year 2013 and has deferred the corresponding receivable.

**j. Personal Property Replacement Taxes**

Personal property replacement taxes are first allocated to the Municipal Retirement Fund, with the balance allocated to the remaining funds at the discretion of the District.

**k. Prepaid Items**

Certain payments to vendors that reflect costs applicable to future accounting periods are recorded as prepaid assets under the consumption method.

**l. Capital Assets**

Capital assets, which include land, buildings, buildings improvements, vehicles, equipment, and construction in progress, are reported in the government-wide financial statements. Capital assets are defined by the District as assets with an initial individual cost of more than \$1,500 and an estimated useful life of one year or more. Such assets are recorded at historical cost or estimated historical cost if purchased or constructed. Donated capital assets are recorded at estimated fair value at the date of donation.

The cost of normal maintenance and repairs that do not add to the value of the asset or materially extend the life of an asset are not capitalized. Major outlays for capital assets and improvements are capitalized as projects are constructed. Interest incurred during construction is not capitalized.

Depreciation of capital assets is provided using the straight-line method over the following estimated useful lives:

<u>Assets</u>	<u>Years</u>
Buildings and building	20-75 years
Land improvements	20-75 years
Furniture, equipment and vehicles	5-20 years

**m. Compensated Absences**

Employees receive fifteen sick days annually. The certified staff could accumulate up to 376 days and the non-certified staff could accumulate up to 300 days. Sick leave is not paid out upon termination.

Non-certified employees receive two to four weeks vacation time each fiscal year depending upon years of service. As of June 30, 2012 any vacation time earned has not been accrued since amount is immaterial. Certified employees who work less than 12 calendar months per year do not earn vacation days.

**WILMETTE PUBLIC SCHOOLS DISTRICT 39**

Notes To Financial Statements (continued)

June 30, 2012

---

**n. Long-Term Obligations**

In the government-wide financial statements, long-term debt and other long-term obligations are reported as liabilities in the statement of net assets. Bond premiums and discounts, as well as issuance costs, are deferred and amortized over the life of the bonds using the straight-line method which approximates the effective interest method. Bonds payable are reported net of the applicable bond premium or discount. Bond issuance costs are reported as deferred charges and amortized over the term of the related debt.

In the governmental fund financial statements, the full amounts of discounts, as well as bond issuance costs, are recognized during the current period. The face amount of debt issued is reported as other financing sources. Premiums received on debt issuances are reported as other financing sources while discounts on debt issuances are reported as other financing uses. Issuance costs, whether or not withheld from the actual debt proceeds received, are reported as debt service expenditures.

**o. Equity Classifications**

Equity is classified as net assets and displayed in three components:

Invested in capital assets, net of related debt – Consists of capital assets including restricted capital assets, net of accumulated depreciation and reduced by the outstanding balances of any bonds, mortgages, notes, or other borrowings that are attributable to the acquisition, construction, or improvement of those assets less than any unspent debt proceeds.

Restricted net assets – Consists of net assets with constraints placed on their use either by 1) external groups such as creditors, grantors, contributors, or laws or regulations of other governments or, 2) law through constitutional provisions or enabling legislation.

Unrestricted net assets – All other net assets that do not meet the definition of “restricted” or “invested in capital assets, net of related debt.”

When both restricted and unrestricted resources are available for use, it is the District’s policy to use restricted resources first, and then unrestricted resources as they are needed.

**p. Reserved Fund Balances**

In the governmental funds financial statements, the District reserves those portions of fund balances which are legally segregated for a specific purpose or do not represent amounts available for other appropriations.

**q. Comparative Data**

The financial statements include summarized prior-year comparative information. Such information does not include sufficient detail to constitute a presentation in conformity with accounting principles generally accepted in the United States of America. Accordingly, such information should be read in

**WILMETTE PUBLIC SCHOOLS DISTRICT 39**

Notes To Financial Statements (continued)

June 30, 2012

---

conjunction with the District's financial statements for the year ended June 30, 2010, from which such information was derived.

**r. Eliminations and Reclassifications**

In the process of aggregating data for the government-wide financial statements, some amounts reported as interfund activity and balances were eliminated or reclassified.

**s. Use of Estimates**

The preparation of financial statements in conformity with accounting principles generally accepted in the United States of America requires management to make estimates and assumptions that affect the reported amounts of assets and liabilities and disclosure of contingent assets and liabilities at the date of the financial statements and the reported amounts of revenues and expenses/expenditures during the reporting period. Actual results could differ from those estimates.

**NOTE 2. STEWARDSHIP, COMPLIANCE AND ACCOUNTABILITY**

**Excess of Expenditures over Budget**

For the year ended June 30, 2012, expenditures exceeded budget in the following funds:

	<u>Budget</u>	<u>Actual</u>	<u>Excess (Surplus)</u>
General Fund:			
Educational Account	\$ 47,502,843	\$ 46,118,235	\$ (1,384,608)
Operations and Maintenance Account	4,569,676	4,110,205	(459,471)
Tort Account	739,417	833,120	93,703
General Fund Total	\$ 52,811,936	\$ 51,061,560	\$ (1,750,376)
Debt Service Fund	\$ 2,104,494	\$ 2,230,490	\$ 125,996
Transportation Fund	\$ 983,829	\$ 1,062,885	\$ 79,056

The expenditure variances were sufficiently absorbed by surpluses that existed at the beginning of the fiscal year and were approved by the Board of Education. Under the State Budget Act expenditures may exceed the budget if additional resources are available to finance such expenditures.

**NOTE 3. CASH AND INVESTMENTS**

**Deposits and Custodial Credit Risk**

Investments held by the District which are short-term highly liquid investments having a remaining maturity of one year or less at the time of purchase are reported by the District at amortized cost. All other investments are reported at fair value. Gains or losses on the sale of investments are recognized

**WILMETTE PUBLIC SCHOOLS DISTRICT 39**

Notes To Financial Statements (continued)

June 30, 2012

upon realization. The District has adopted a formal written investment and cash management policy. The institutions in which investments are made must be approved by the Board of Education.

At June 30, 2012 the carrying amount of the District's deposits, which include both cash and certificates of deposit (excluding cash on hand of \$255), totaled \$25,769,051 and the bank balances totaled \$26,185,673. Custodial credit risk is the risk that in the event of a bank failure, the government's deposits may not be returned to it. The government does not have a deposit policy for custodial credit risk. These amounts were entirely insured or collateralized as of June 30, 2012.

As of June 30, 2012, the District has the following investments and maturities:

<b>Investment Type</b>	<b>Fair Value</b>	<b>Maturities (in years) Less than 1</b>	<b>Percent of Portfolio</b>	<b>Applicable Agency Rating</b>
<b>Other Investments:</b>				
Illinois School District Liquid Asset Fund	\$ 13,954,266	\$ 13,954,266	100%	AAAm
<b>Total Investments</b>	<b>\$ 13,954,266</b>	<b>\$ 13,954,266</b>	<b>100%</b>	

The Illinois School District Liquid Asset Fund and the Illinois Investors Fund (IIIT) are not-for-profit investment trusts. The values of the positions in these investment trusts are the same as the value of the pool shares.

*Interest Rate Risk.* The District's investment policy seeks to ensure the preservation of capital in the District's overall portfolio. Return on investment is of secondary importance to safety of principal and liquidity. The policy does not limit investment maturities as a means of managing its exposure to fair value losses arising from increasing interest rates. However the policy requires the District investment portfolio to be sufficiently liquid to enable the District to meet all operating requirements as they come due. A portion of the portfolio is required to be invested in readily available funds to ensure appropriate liquidity.

*Credit Risk.* The District's investments are rated, as shown above, by the applicable rating agency.

*Foreign Currency Risk.* The District held no foreign investments during the fiscal year.

*Concentration of Credit Risk.* The District places no limit on the amount of the District may invest any one issuer. More than 5 percent of the District's investments are concentrated in specific individual investments. The above table indicates the percentage of each investment to the total investments of the District.

*Custodial Credit Risk.* With respect to deposits, custodial credit risk is the risk that, in the event of bank failure the District's deposits may not be returned to them. The District's investment policy limits

**WILMETTE PUBLIC SCHOOLS DISTRICT 39**

Notes To Financial Statements (continued)

June 30, 2012

---

the exposure to deposit custodial credit risk by requiring all deposits in excess of FDIC insurable limits to be insured by collateral.

With respect to investments, custodial credit risk is the risk that, in the event of failure of the counterparty, the government will not be able to recover the value of its investment or collateral securities that are in possession of an outside party. The District's investment policy limits the exposure to investment custodial credit risk by requiring all investments be secured by private insurance or collateral.

Separate cash and investment accounts are not maintained for all District funds; instead, the individual funds maintain their invested and uninvested balances in the common account balance attributable to each participating fund.

Occasionally certain funds participating in the common bank accounts will incur overdrafts (deficits) in the account. The overdrafts results from expenditures that have been approved by the Board of Education.

**NOTE 4. INTERFUND TRANSFERS**

The following interfund transfers were made during the year ended June 30, 2012:

<u>Transfer From</u>	<u>Transfer To</u>	<u>Amount</u>
General Fund - Operations and Maintenance Account	Debt Service Fund	\$412,500
Fire Prevention and Safety Fund	Debt Service Fund	386,600
		<u>\$799,100</u>

Transfers to the Debt Service Fund were made to provide funds for debt service payments.

**WILMETTE PUBLIC SCHOOLS DISTRICT 39**  
Notes To Financial Statements (continued)  
June 30, 2012

**NOTE 5. CAPITAL ASSETS**

A summary of changes in capital assets follows:

	Balance June 30, 2011	Additions	Deletions	Balance June 30, 2012
Capital assets, not being depreciated:				
Land	\$ 610,765	\$ -	\$ -	\$ 610,765
Total capital assets not being depreciated	610,765	-	-	610,765
Capital assets, being depreciated:				
Land Improvements	2,709,539	20,200	-	2,729,739
Buildings	56,003,181	1,466,862	-	57,470,043
Equipment and Vehicles	13,277,371	766,203	-	14,043,574
Total capital assets being depreciated	71,990,091	2,253,265	-	74,243,356
Accumulated depreciation for:				
Land Improvements	695,375	138,247	-	833,622
Buildings	26,110,625	1,899,291	-	28,009,916
Equipment and Vehicles	9,137,974	1,070,386	-	10,208,360
Total accumulated depreciation	35,943,974	3,107,924	-	39,051,898
Total capital assets being depreciated, net	36,046,117	(854,659)	-	35,191,458
<b>Total capital assets, net</b>	<b>\$ 36,656,882</b>	<b>\$ (854,659)</b>	<b>\$ -</b>	<b>\$ 35,802,223</b>

Depreciation expense was recognized in the operating activities of the District as follows:

<i>Instructional Services:</i>	
Regular Programs	\$ 1,957,992
Special Programs	279,713
<i>Supporting Services:</i>	
General administration	559,426
Operations and maintenance	310,793
	<u>\$ 3,107,924</u>



**WILMETTE PUBLIC SCHOOLS DISTRICT 39**  
Notes To Financial Statements (continued)  
June 30, 2012

**NOTE 6. LONG-TERM DEBT**

During the year ended June 30, 2012, the following changes occurred in Long-Term Debt:

	<i>Balance</i> <i>July 1,</i> <i>2011</i>	<i>Additions</i>	<i>Reductions</i>	<i>Balance</i> <i>June 30,</i> <i>2012</i>	<i>Amount due</i> <i>in one year</i>
General Obligation Bonds	\$ 15,830,000	\$ 1,050,000	\$ 1,735,000	\$ 15,145,000	\$ 780,000
Deferred Refunding	(297,383)	(7,281)	(22,305)	(282,359)	-
Unamortized Premium	126,115	773,114	23,641	875,588	-
Unamortized Discount	(31,353)	-	(3,484)	(27,869)	-
<b>Total Bonds Payable</b>	<b>\$ 15,627,379</b>	<b>\$ 1,815,833</b>	<b>\$ 1,732,852</b>	<b>\$ 15,710,360</b>	<b>\$ 780,000</b>
Debt Certificates	2,950,000	7,515,000	695,000	9,770,000	725,000
Net Pension Obligation - IMRF	-	166,111	-	166,111	-
Other Post Employment Benefits	1,029,350	366,518	-	1,395,868	-
<b>Total Long-Term Debt</b>	<b>\$ 19,606,729</b>	<b>\$ 9,863,462</b>	<b>\$ 2,427,852</b>	<b>\$ 27,042,339</b>	<b>\$ 1,505,000</b>

General obligation bonds are direct obligations and pledge the full faith and credit of the District. General obligation bonds currently outstanding are as follows:

<b>Purpose</b>	<b>Interest Rates</b>	<b>Original Indebtedness</b>	<b>Face Amount</b>	<b>Carrying Amount</b>
Series Refunding and Working Cash dated March 1, 2004 are due in annual installments through June 1, 2019	3.55%-3.75%	\$ 2,370,000	\$ 2,370,000	\$ 2,015,000
Series Refunding Life Safety dated July 1, 2007 are due in annual installments through June 1, 2022	4.00%-4.20%	3,625,000	3,625,000	3,575,000
Series 2010 General Obligation Limited Tax School Bonds dated July 7, 2010 are due in annual installments through January 15, 2026	2.00%-4.13%	8,505,000	8,505,000	8,505,000
Series General Obligation Limited Tax Refunding dated June 14, 2012 are due in annual installments through December 15, 2016	1.00%	1,050,000	1,050,000	1,050,000
<b>Total</b>		<b>\$ 15,550,000</b>	<b>\$ 15,550,000</b>	<b>\$ 15,145,000</b>

**WILMETTE PUBLIC SCHOOLS DISTRICT 39**

Notes To Financial Statements (continued)

June 30, 2012

Annual debt service requirements to maturity for general obligation bonds are as follows for government type activities:

<u>Fiscal Year Ending June 30,</u>	<u>Principal</u>	<u>Interest</u>	<u>Total</u>
2013	\$ 780,000	\$ 527,622	\$ 1,307,622
2014	825,000	514,368	1,339,368
2015	855,000	500,493	1,355,493
2016	890,000	485,918	1,375,918
2017	940,000	443,116	1,383,116
2018-2022	5,695,000	1,626,137	7,321,137
2023-2026	5,160,000	492,160	5,652,160
<b>Total</b>	<b>\$ 15,145,000</b>	<b>\$ 4,589,814</b>	<b>\$ 19,734,814</b>

During the year ended June 30, 2012, the District issued \$1,050,000 in General Obligation Limited Tax Refunding Bonds to refund the Series Refunding Life Safety Bond dated February 21, 2001. Proceeds of \$1,032,281 were issued to purchase U.S. Government securities. These securities were deposited in an irrevocable trust with an escrow agent to provide for all future debt service payments on the refunded debt. As a result this bond is considered defeased and the liability has been removed from the long-term debt. There was no economic gain recognized. At June 30, 2012, \$4,130,000 of bonds outstanding are considered defeased.

**Defeased General Obligation Bonds Outstanding**

The District is subject to the Illinois Compiled Statues which limits the amount of bond indebtedness, including the certificate of participation, to 6.9% of the most recent available equalized assessed valuation of the District. As of June 30, 2012, the statutory debt limit for the District was \$121,561,817 providing a debt margin of \$99,037,308 after taking into account amounts available in the Debt Service Fund.

**Certificates of Participation**

During the year ended June 30, 2012, the District issued \$7,515,000 in Debt Certificates with an average interest rate of 3.41%. The net proceeds of \$8,176,559 (after premium and payment of underwriting fees, insurance and other issuance costs) were deposited into the Operations and Maintenance Account and will be used for various projects. The debt certificates will be repaid from the Debt Service Fund.

In the fiscal year 2008, the District issued \$4,885,000 in Debt Certificates with an average interest rate of 4.05%. The net proceeds of \$4,879,118 (after payment of underwriting fees, insurance, and other issuance costs) were used for various projects for fire protection and safety. The debt certificates will be repaid from the Debt Service Fund.

**WILMETTE PUBLIC SCHOOLS DISTRICT 39**

Notes To Financial Statements (continued)

June 30, 2012

Annual debt service requirements to maturity for debt certificates are as follows:

<b>Fiscal Year Ending June 30,</b>	<b>Principal</b>	<b>Interest</b>	<b>Total</b>
2013	\$ 725,000	\$ 333,607	\$ 1,058,607
2014	755,000	303,292	1,058,292
2015	1,325,000	272,692	1,597,692
2016	565,000	248,942	813,942
2017	550,000	232,217	782,217
2018-2022	3,305,000	817,510	4,122,510
2023-2026	2,545,000	201,348	2,746,348
<b>Total</b>	<b>\$ 9,770,000</b>	<b>\$ 2,409,608</b>	<b>\$ 12,179,608</b>

**NOTE 7. RISK MANAGEMENT**

The District is exposed to various risks of loss related to employee health benefits; workers' compensation claims; theft of, damage to, and destruction of assets; and natural disasters. To protect from such risks, the District participates in the entity risk pools (see Notes 10 and 11). SSCIP for its general liability and property coverage and School Employees Loss Fund (SELF) for workers' compensation claims. The District pays annual premiums to the pools for insurance coverage. The arrangements with the pools provide that each will be self-sustaining through member premiums and will reinsure through commercial companies for claims in excess of certain levels established by the pools. There have been no significant reductions in insurance coverage from coverage in any of the past three fiscal years.

The District continues to carry commercial insurance for all other risks of loss, including torts and professional liability insurance. Premiums have been recorded as expenditures in the appropriate funds. There have been no significant reductions in insurance coverage from coverage in the prior years. Settled claims resulting from these risks have not exceeded commercial insurance coverage in any of the past three fiscal years.

**NOTE 8. RETIREMENT FUND COMMITMENTS**

**Illinois Teachers' Retirement System**

The District participates in the Teachers' Retirement System of the State of Illinois (TRS). TRS is a cost-sharing multiple-employer defined benefit pension plan that was created by the Illinois legislature for the benefit of Illinois public school teachers employed outside the city of Chicago. The Illinois Pension Code outlines the benefit provisions of TRS, and amendments to the plan can be made only by legislative action with the Governor's approval. The state of Illinois maintains primary responsibility for the funding of the plan, but contributions from participating employers and members are also required. The TRS Board of Trustees is responsible for the System's administration.

## WILMETTE PUBLIC SCHOOLS DISTRICT 39

### Notes To Financial Statements (continued)

June 30, 2012

---

TRS members include all active nonannuitants who are employed by a TRS-covered employer to provide services for which teacher certification is required. The active member contribution rate for the year ended June 30, 2012, was 9.4 percent of creditable earnings. The same contribution rate applies to members whose first contributing service is on or after January 1, 2011, the effective date of the benefit changes contained in Public Act 96-0889. These contributions, which may be paid on behalf of employees by the employer, are submitted to TRS by the employer. The active member contribution rate was also 9.4 percent for the years ended June 30, 2011 and 2010.

The State of Illinois makes contributions directly to TRS on behalf of the District's TRS-covered employees. The District's total payroll reported to TRS for the year ended June 30, 2012 was \$25,714,536.

**On-behalf contributions.** The state of Illinois makes employer pension contributions on behalf of the District. For the year ended June 30, 2012, state of Illinois contributions were based on 24.91 percent of creditable earnings not paid from federal funds and the District recognized revenue and expenditures of \$6,387,397 in pension contributions that the state of Illinois paid directly to TRS. For the years ended June 30, 2011, and June 30, 2010, the State of Illinois contribution rates as percentages of creditable earnings not paid from federal funds were 23.10 percent (\$5,891,646) and 23.38 percent (\$5,942,511), respectively.

The District makes other types of employer contributions directly to TRS.

**2.2 Formula Contributions.** Employers contribute 0.58 percent of creditable earnings for the 2.2 formula change. This rate is specified by statute. Contributions for the year ended June 30, 2012 were \$149,144. Contributions for the years ending June 30, 2011, and June 30, 2010, were \$148,966 and \$148,751, respectively.

**Federal and special trust fund contributions.** When TRS members are paid from federal and special trust funds administered by the district, there is a statutory requirement for the district to pay an employer pension contribution from those funds. Under a policy adopted by the TRS Board of Trustees that was first effective in the fiscal year ended June 30, 2006, employer contributions for employees paid from federal and special trust funds will be the same as the state contribution rate to TRS.

For the year ended June 30, 2012, the employer pension contribution was 24.91 percent of salaries paid from federal and special trust funds. For the year ended June 30, 2011 and 2010 the employer contribution was 23.10 and 23.38 percent of salaries paid from federal and special trust funds, respectively. For the year ended June 30, 2012, salaries totaling \$72,637 were paid from federal and special trust funds that required employer contributions of \$18,094. For the years ended June 30, 2011 and June 30, 2010, required district contributions were \$41,313 and \$53,710, respectively.

**WILMETTE PUBLIC SCHOOLS DISTRICT 39**

Notes To Financial Statements (continued)

June 30, 2012

---

**Early Retirement Option (ERO).** The District is also required to make one-time employer contributions to TRS for members retiring under the Early Retirement Option (ERO). The payments vary depending on the age and salary of the member.

The maximum employer contribution is 117.5 percent and applies when the member is age 55 at retirement.

For the year ended June 30, 2012, the District paid \$0 to TRS for employer contributions under the ERO program. For the years ended June 30, 2011 and June 30, 2010, the District paid \$0 and \$172,308 in employer ERO contributions, respectively.

**Salary increases over 6 percent and excess sick leave.**

If an employer grants salary increases over 6 percent and those salaries are used to calculate a retiree's final average salary, the employer makes a contribution to TRS. The contribution will cover the difference in actuarial cost of the benefit based on actual salary increases and the benefit based on salary increases of up to 6 percent.

For the year ended June 30, 2012, the District paid \$16,486 to TRS for employer contributions due on salary increases in excess of 6 percent. For the years ended June 30, 2011 and 2010, the District paid \$48,391 and \$0 in employer contributions due on salary increases in excess of 6 percent, respectively.

If an employer grants sick leave days in excess of the normal annual allotment and those days are used as TRS service credit, the District makes a contribution to TRS. The contribution is based on the number of excess sick leave days used as service credit, the highest salary used to calculate final average salary, and the TRS total normal cost rate (17.83 percent of salary during the year ended June 30, 2012 as recertified pursuant to Public Act 96-1511).

For the year ended June 30, 2012, the District paid \$5,233 to TRS for sick leave days granted in the excess of the normal annual allotment. For the years ended June 30, 2011 and 2012, the District paid \$0 and \$0 in employer contributions granted for sick leave days.

TRS financial information, an explanation of TRS' benefits, and descriptions of member, employer and state funding requirements can be found in the TRS *Comprehensive Annual Financial Report* for the year ended June 30, 2011. The report for the year ended June 30, 2012, is expected to be available in late 2012. The reports may be obtained by writing to the Teachers' Retirement System of the State of Illinois, P.O. Box 19253, 2815 West Washington Street, Springfield, IL 62794-9253. The most current report is also available on the TRS Web site at <http://trs.illinois.gov>.

## WILMETTE PUBLIC SCHOOLS DISTRICT 39

Notes To Financial Statements (continued)

June 30, 2012

---

### **Teacher Health Insurance Security (THIS)**

The District participates in the Teacher Health Insurance Security (THIS) Fund, a cost-sharing, multiple-employer defined benefit postemployment healthcare plan that was established by the Illinois legislature for the benefit of Illinois public school teachers employed outside the city of Chicago. The THIS Fund provides medical, prescription, and behavioral health benefits, but does not provide vision, dental or life insurance benefits to annuitants of the Teachers' Retirement System (TRS). Annuitants may participate in the state administered participating provider option plan or choose from several managed care options.

The State Employees Group Insurance Act of 1971 (5ILCS 375) outlines the benefit provisions of THIS Fund and amendments to the plan can be made only by legislative action with the Governor's approval. The Illinois Department of Healthcare and Family Services (HFS) and the Illinois Department of Central Management Services (CMS) administer the plan with the cooperation of TRS. Effective July 1, 2012, in accordance with Executive Order 12-01, the plan is administered by CMS with the cooperation of TRS. Section 6.6 of the State Employees Group Insurance Act of 1971 requires all active contributors to TRS who are not employees of the state to make a contribution to THIS Fund.

The percentage of employer required contributions in the future will not exceed 105 percent of the percentage of salary actually required to be paid in the previous fiscal year.

**On Behalf Contributions to THIS Fund.** The state of Illinois makes employer retiree health insurance contributions on behalf of the District. State contributions are intended to match contributions to THIS Fund from active members which were 0.88 percent of pay during the year ended June 30, 2012. State of Illinois contributions were \$226,288, and the district recognized revenue and expenditures of this amount during the year.

State contributions intended to match active member contributions during the years ended June 30, 2011 and June 30, 2010 were 0.88 percent and 0.84 percent of pay, respectively. State contributions on behalf of district employees were \$226,017, and \$215,433 respectively.

**Employer contributions to THIS Fund.** The District also makes contributions to THIS Fund. The District THIS Fund contribution was 0.66 percent during the years ended June 30, 2012 and June 30, 2011, and 0.63 percent during the year ended June 30, 2010. For the year ended June 30, 2012, the District paid \$169,716 to the THIS Fund. For the years ended June 30, 2011 and June 30, 2010, the District paid \$169,513 and \$161,575, respectively, which was 100 percent of the required contribution.

**Further Information on THIS Fund.** The publicly available financial report of the THIS Fund may be obtained by writing to the Department of Healthcare and Family Services, 201 S. Grand Ave., Springfield, IL 62763-3838.

**WILMETTE PUBLIC SCHOOLS DISTRICT 39**

Notes To Financial Statements (continued)

June 30, 2012

---

**Illinois Municipal Retirement Fund**

*Plan Description.* The District's defined benefit pension plan for Regular employees provides retirement and disability benefits, post retirement increases, and death benefits to plan members and beneficiaries. The District's plan is affiliated with the Illinois Municipal Retirement Fund (IMRF), an agent multiple-employer plan. Benefit provisions are established by statute and may only be changed by the General Assembly of the State of Illinois. IMRF issues a publicly available financial report that includes financial statements and required supplementary information. That report may be obtained on-line at [www.imrf.org](http://www.imrf.org).

*Funding Policy.* As set by statute, the District's Regular plan members are required to contribute 4.50 percent of their annual covered salary. The statute requires employers to contribute the amount necessary, in addition to member contributions, to finance the retirement coverage of its own employees. The District contribution rate for calendar year 2011 used by the employer was 9.43 percent of annual covered payroll. The District annual required contribution rate for calendar year 2011 was 10.63 percent. The District also contributes for disability benefits, death benefits and supplemental retirement benefits, all of which are pooled at the IMRF level. Contribution rates for disability and death benefits are set by the IMRF Board of Trustees, while the supplemental retirement benefits rate is set by statute.

*Annual Pension Cost.* For calendar year ending December 31, 2011, the District's actual contributions for pension cost for the Regular plan were \$599,239. Its required contribution for calendar year 2011 was \$675,495.

**Three-Year Trend Information for the Regular Plan**

<b>Calendar Year Ending</b>	<b>Annual Pension Cost (APC)</b>	<b>Percentage of APC Contributed</b>	<b>Net Pension Obligation</b>
12/31/2011	\$675,495	89%	\$166,111
12/31/2010	643,856	86%	89,855
12/31/2009	465,089	100%	-

The required contribution for 2011 was determined as part of the December 31, 2009, actuarial valuation using the entry age normal actuarial cost method. The actuarial assumptions at December 31, 2009, included (a) 7.5 percent investment rate of return (net of administrative and direct investment expenses), (b) projected salary increases of 4.00% a year, attributable to inflation, (c) additional projected salary increases ranging from 0.4% to 10% per year depending on age and service, attributable to seniority/merit, and (d) post retirement benefit increases of 3% annually. The actuarial value of the District's Regular plan assets was determined using techniques that spread the effects of short-term volatility in the market value of investments over a five-year period with a 20% corridor between the actuarial and market value of assets. The District Regular plan's unfunded actuarial accrued liability at December 31, 2009 is being amortized as a level percentage of projected payroll on an open 30 year basis.

## WILMETTE PUBLIC SCHOOLS DISTRICT 39

### Notes To Financial Statements (continued)

June 30, 2012

---

*Funded Status and Funding Progress.* As of December 31, 2011, the most recent actuarial valuation date, the Regular plan was 73.79 percent funded. The actuarial accrued liability for benefits was \$11,654,148 and the actuarial value of assets was \$8,599,557, resulting in an underfunded actuarial accrued liability (UAAL) of \$3,054,591. The covered payroll for calendar year 2011 (annual payroll of active employees covered by the plan) was \$6,354,606 and the ratio of the UAAL to the covered payroll was 48 percent.

The schedule of funding progress, presented as RSI following the notes to the financial statements, presents multiyear trend information about whether the actuarial value of plan assets is increasing or decreasing over time relative to the actuarial accrued liability for benefits.

#### **NOTE 9. OTHER POST EMPLOYMENT BENEFITS**

##### **Plan Description**

The medical and dental benefit plans for the District are single-employer defined benefit healthcare reimbursement plans administered by the District. The District has the authority to establish and amend benefit provisions of the medical and dental benefit plans. The level of reimbursement is negotiated by the District and the applicable union groups.

##### **Monthly Retiree Contributions**

Retirees make no contributions toward the cost of District postretirement reimbursement plans.

##### **Employer Contributions**

The medical reimbursement plans for the District are funded on a pay-as-you-go basis.

##### **Annual OPEB Cost and Net OPEB Obligation**

The Annual OPEB Cost is calculated based on the Annual Required Contribution (ARC) of the employer, an amount actuarially determined in accordance with the parameters of GASB Statement 45. The ARC represents a level of funding that, if paid on an ongoing basis, is projected to cover normal cost each year and amortize any unfunded actuarial liabilities (or funding excess) over a period not to exceed thirty years. The following table shows the components of Annual OPEB Cost:



**WILMETTE PUBLIC SCHOOLS DISTRICT 39**

Notes To Financial Statements (continued)

June 30, 2012

---

	<u>FY 2012</u>	<u>FY 2011</u>
Annual Required Contribution	\$ 757,304	\$ 721,531
Interest on net OPEB obligations	25,734	17,512
Adjustment to annual required contribution	<u>(47,980)</u>	<u>(32,651)</u>
Annual OPEB cost (expense)	735,058	706,392
Estimated Contributions made by the District	<u>368,540</u>	<u>377,532</u>
Increase in net OPEB obligation	366,518	328,860
Net OPEB obligation – Beginning of Year	<u>1,029,350</u>	<u>700,490</u>
Net OPEB obligation – End of Year	<u>\$ 1,395,868</u>	<u>\$ 1,029,350</u>

The annual OPEB cost, the percentage of annual OPEB cost contributed to the plan, and the Net OPEB obligation at the end of the year is as follows:

	<u>FY 2012</u>	<u>FY 2011</u>
Annual OPEB cost (expense)	\$ 735,058	\$ 706,392
Estimated contributions made by District	368,540	377,531
Percentage of Annual OPEB Cost Contributed	50.1%	53.4%
Net OPEB Obligation as of December 31	\$ 1,395,868	\$ 1,029,350

Actuarial valuations of an ongoing plan involve estimates of the value of reported amounts and assumptions about the probability of occurrence of events far into the future. Examples include assumptions about future employment, mortality, and the healthcare cost trend. Amounts determined regarding the funded status of the plan and the annual required contributions of the employer are subject to continual revision as actual results are compared to past expectations and new estimates are made about the future.

**Actuarial Methods and Assumptions**

Projections of benefits for financial reporting purposes are based on the substantive plan (the plan as understood by the employer and the plan members) and include the types of benefits provided at the time of the valuation and the historical pattern of sharing of benefit costs between the employer and plan members to that point. The actuarial methods and assumptions used include techniques that are designed to reduce the effects of short-term volatility in actuarial accrued liabilities and the actuarial value of assets, consistent with the long-term perspective of the calculations.

**Valuation Method**

The method used for the medical and dental benefit plans is called the projected Unit Credit Method. According to this method an equal amount of an employee's projected benefit is allocated to each year from the date the employee first enters the plan until the date the employee is first eligible to receive benefits.

**WILMETTE PUBLIC SCHOOLS DISTRICT 39**

Notes To Financial Statements (continued)

June 30, 2012

---

**Valuation of Assets**

There are no assets that have been set aside to fund the liabilities for this plan. These plans are funded on a pay-as-you-go basis.

**Eligible Plan Participants**

All active and retired employees who are participants in the medical and dental benefit plans as of the date this valuation was performed are included in the calculations in this report.

**Actuarial Assumptions**

These are the actuarial assumptions used for this valuation.

Valuation Date	July 1, 2010
Interest Rate	2.5%
Amortization Method	Level Dollar Amount, Open
Amortization Period for Actuarial Accrued Liability	30 Years
Amortization Factor	21.454
Percent of Current Spouses Electing Coverage	N/A
Mortality Table	RP-2000 gender distinct

The schedule of funding progress, presented as RSI following the notes to the financial statements, presents multiyear trend information about whether the actuarial value of plan assets in increasing or decreasing over time relative to the actuarial accrued liability for benefits.

**NOTE 10. FUND BALANCE REPORTING**

According to Government Accounting Standards, fund balances are to be classified into five major classifications: Nonspendable Fund Balance, Restricted Fund Balance, Committed Fund Balance, Assigned Fund Balance, and Unassigned Fund Balance.

a. Nonspendable Fund Balance

The nonspendable fund balance classification includes amounts that cannot be spent because they are either (a) not in spendable form or (b) legally or contractually required to be maintained intact. The “not in spendable form” criterion includes items that are not expected to be converted to cash, for example inventories and prepaid amounts.

b. Restricted Fund Balance

The restricted fund balance classification refers to amounts that are subject to outside restrictions, not controlled by the entity. Things such as restrictions imposed by creditors, grantors, contributors, or laws and regulations of other governments, or imposed by law through constitutional provisions or enabling legislation. Special Revenue Funds are by definition

**WILMETTE PUBLIC SCHOOLS DISTRICT 39**

Notes To Financial Statements (continued)

June 30, 2012

---

restricted for those specified purposes. The District has several revenue sources received within different funds that also fall into these categories –

1. Special Education

Revenues and the related expenditures of this restricted tax levy are accounted for in the Educational Account. Expenditures exceeded revenue for this purpose, resulting in no restricted fund balance.

2. Tort Immunity

Expenditures and the related revenues are accounted for in the Tort Immunity Account. Revenues exceeded expenditures for this purpose, however due to a nonspendable fund balance of \$108,151, the Tort Immunity Fund had an unassigned fund balance of (\$96,466) at June 30, 2012.

3. State and Federal Grants

Proceeds from state and federal grants and the related expenditures have been included in the General Fund and various Special Revenue Funds. At June 30, 2012, expenditures exceeded revenue from state and federal grants, resulting in no restricted balances.

4. Social Security

Expenditures and the related revenues of this restricted tax levy are accounted for in the Municipal Retirement/Social Security Fund. Revenues exceeded expenditures for this purpose, resulting in a restricted fund balance of \$172,368. The remaining balance is restricted for Municipal Retirement purposes.

5. Capital Projects Funds

Expenditures and the related revenues are accounted for in the Fire Prevention and Safety Fund. All equity within this fund is restricted for the associated capital expenditures within the fund.

c. Committed Fund Balance

The committed fund balance classification refers to amounts that can only be used for specific purposes pursuant to constraints imposed by formal action of the government's highest level of decision making authority (the School Board). Those committed amounts cannot be used for any other purpose unless the government removes or changes the specified use by taking the same type of formal action it employed to previously commit those amounts.

No committed balances existed as of June 30, 2012.

**WILMETTE PUBLIC SCHOOLS DISTRICT 39**

Notes To Financial Statements (continued)

June 30, 2012

d. Assigned Fund Balance

The assigned fund balance classification refers to the amounts that are constrained by the government's intent to be used for a specific purpose, but are neither restricted nor committed. Intent should be expressed by (a) the governing body itself or (b) a body (a budget or finance committee, for example) or official to which the governing body has delegated the authority to assign amounts to be used for specific purposes.

No assigned balances existed as of June 30, 2012.

e. Unassigned Fund Balance

The unassigned fund balance classification is the residual classification for amounts in the General Operating Funds for amounts that have not been restricted, committed, or assigned to specific purposes within the General Funds.

f. Reconciliation of Fund Balance Reporting

<b>Account/Fund</b>	<b>Non Spendable</b>	<b>Restricted</b>	<b>Committed</b>	<b>Assigned</b>	<b>Unassigned</b>
Educational	\$ -	\$ -	\$ -	\$ -	\$ 20,463,106
Operations & Maintenance	-	-	-	-	9,770,567
Working Cash	-	-	-	-	405,891
Tort Immunity	108,151	-	-	-	(96,466)
Debt Service	-	2,390,491	-	-	-
Transportation	-	159,967	-	-	-
Municipal Retirement	-	430,920	-	-	-
Fire Prevention and Safety	-	979,589	-	-	-
	<u>\$ 108,151</u>	<u>\$ 3,960,967</u>	<u>\$ -</u>	<u>\$ -</u>	<u>\$ 30,543,098</u>

g. Expenditures of Fund Balance

Unless specifically identified, expenditures disbursed act to reduce restricted balances first, then committed balances, next assigned balances, and finally act to reduce unassigned balances. Expenditures disbursed for a specifically identified purpose will act to reduce the specific classification of fund balance that is identified.

**NOTE 11. SUBURBAN SCHOOL COOPERATIVE INSURANCE POOL (SSCIP)**

The District is a member of SSCIP, a voluntary cooperative agency consisting of Illinois public school districts and joint agreements. SSCIP's purpose is to manage and fund first-party property losses and third-party liability claims of its members. Each member district has a financial responsibility to make annual contributions based on property values, student enrollment, personnel employed, past loss history and vehicles owned.

**WILMETTE PUBLIC SCHOOLS DISTRICT 39**  
Notes To Financial Statements (concluded)  
June 30, 2012

---

No material decreases in insurance coverages have occurred nor have any insurance claims in excess of insurance coverages have paid pr reported during the last three years.

Complete financial statements of SSCIP are available from its Treasurer at 5540 Arlington Drive, Hanover Park, IL 60103.

**NOTE 12. SCHOOL EMPLOYEES LOSS FUND (SELF)**

The District is a member of SELF, which has been formed to reduce local school districts' workers' compensation costs. SELF is controlled by a Board of Directors which is composed of representatives designed by each school district. The day-to-day operations of SELF are managed through and Executive Board elected by the Board of Directors. Each member district has a financial responsibility for annual membership contributions, which are calculated to provide for administrative expenses, specific and aggregate excess insurance coverage, and the funding of a portion of anticipated losses and loss adjustment expenses which will be borne directly by the membership. The losses and loss adjustment expenses to be borne by the membership are those which must be incurred prior to the attachment of excess insurance coverage. Complete financial statements for SELF can be obtained from their accountant at Two Pierce Place, Itasca, IL 60143.

**NOTE 13. JOINT VENTURE – WILMETTE COMMUNITY SPECIAL EDUCATION AGREEMENT (WCSEA)**

The District and other districts have entered into a joint agreement to provide special education programs and services to the students enrolled. Each member district has a financial responsibility for annual and special assessments as established by the policy board. Complete financial statements for the Agreement can be obtained from the Administrative Offices at 615 Locust Road Wilmette, Illinois 60091.

**NOTE 14. STATE AND FEDERAL AID CONTINGENCIES**

The District has received federal and state grants for specific purposes that are subject to review and audit by the grantor agencies. Such audits could lead to requests for reimbursements to the grantor agency for expenditures disallowed under terms of the grants. Management believes such disallowances, if any, would be immaterial.

**NOTE 15. CONTINGENT LIABILITIES**

The District is a defendant in various lawsuits. Although the outcome of these lawsuits is not presently determinable, in the opinion of the District's attorneys, the resolution of these matters will not have a material adverse effect on the financial condition of the District. The District has approximately \$7,500,000 in commitments related to future facility projects for FY13 – FY15.

**WILMETTE PUBLIC SCHOOLS DISTRICT 39**

Schedule of Funding Progress (unaudited)

Illinois Municipal Retirement Fund

June 30, 2012

---

<b>Actuarial Valuation Date</b>	<b>Actuarial Value of Assets (a)</b>	<b>Actuarial Accrued Liability (AAL) –Entry Age (b)</b>	<b>Unfunded AAL (UAAL) (b-a)</b>	<b>Funded Ratio (a/b)</b>	<b>Covered Payroll (c)</b>	<b>UAAL as a Percentage of Covered Payroll [(b-a)/c]</b>
12/31/2011	\$8,599,557	\$11,654,148	\$3,054,591	73.79%	\$6,354,606	48.07%
12/31/2010	8,258,040	11,055,178	2,797,138	74.70%	6,464,422	43.27%
12/31/2009	8,389,077	10,897,993	2,508,916	76.98%	6,397,377	39.22%

On a market value basis, the actuarial value of assets as of December 31, 2011 is \$7,935,777. On a market basis, the funded ratio would be 68.09%.

**WILMETTE PUBLIC SCHOOLS DISTRICT 39**  
 Schedule of Funding Progress (unaudited)  
 Other Post Employment Benefits  
 June 30, 2012

---

<b>Actuarial Valuation Date</b>	<b>Actuarial Value of Assets (a)</b>	<b>Actuarial Accrued Liability (AAL) -Entry Age (b)</b>	<b>Unfunded AAL (UAAL) (b-a)</b>	<b>Funded Ratio (a/b)</b>
7/1/2011	\$0	\$ 7,886,933	\$7,886,933	0.00%
7/1/2010	0	7,332,418	7,332,418	0.00%
7/1/2009	0	7,480,551	7,480,551	0.00%

**WILMETTE PUBLIC SCHOOLS DISTRICT 39**  
**SCHEDULE OF REVENUES, EXPENDITURES AND CHANGES IN FUND**  
**BALANCES - BUDGET AND ACTUAL - GENERAL FUND**  
**YEAR ENDED JUNE 30, 2012**

	General			
	Original Budget	Final Budget	Actual	Variance Over/Under
<b>REVENUES</b>				
Local sources	\$ 48,163,110	\$ 48,163,110	\$ 48,545,692	\$ 382,582
State sources	8,931,437	8,931,437	9,859,341	927,904
Federal sources	1,157,259	1,157,259	1,297,124	139,865
<b>Total Revenues</b>	<b>58,251,806</b>	<b>58,251,806</b>	<b>59,702,157</b>	<b>1,450,351</b>
<b>EXPENDITURES</b>				
Current operating:				
Instruction	34,106,685	34,106,685	33,096,967	1,009,718
Support services	17,684,432	17,684,432	16,648,680	1,035,752
Community services	84,560	84,560	90,219	(5,659)
Non-programmed charges	936,259	936,259	1,225,694	(289,435)
<b>Total Expenditures</b>	<b>52,811,936</b>	<b>52,811,936</b>	<b>51,061,560</b>	<b>1,750,376</b>
Excess (deficiency) of revenues over expenditures	5,439,870	5,439,870	8,640,597	3,200,727
Other financing sources (uses):				
Principal on bonds sold	-	7,500,000	7,500,000	-
Transfers out	-	-	(412,500)	(412,500)
<b>Total other financing sources (uses)</b>	<b>-</b>	<b>7,500,000</b>	<b>7,087,500</b>	<b>(412,500)</b>
<b>Net change in fund balance</b>	<b>\$ 5,439,870</b>	<b>\$ 12,939,870</b>	<b>15,728,097</b>	<b>\$ 2,788,227</b>
Fund balances at beginning of year			14,923,152	
<b>FUND BALANCES AT END OF YEAR</b>			<b>\$ 30,651,249</b>	



**WILMETTE PUBLIC SCHOOLS DISTRICT 39**  
Notes To Required Supplementary Information  
June 30, 2012

---

**BUDGETS AND BUDGETARY ACCOUNTING**

Annual budgets for all Governmental Funds are adopted on the modified accrual basis, consistent with generally accepted accounting principles (GAAP) for local governments. Encumbrance accounting, under which purchase orders, contracts, and other commitments for the expenditure of monies are recorded in order to reserve that portion of the applicable appropriation, is employed as an extension of formal budgetary integration in the Governmental Funds. All encumbrances are canceled at year end, and, if necessary, are reinstated at the beginning of the subsequent fiscal year.

Legal spending control for District moneys is at the fund level, but management control is exercised at budgetary line item levels within each fund. The Board of Education, in accordance with Chapter 105, Section 5/17-1 of the *Illinois Compiled Statutes*, follows these procedures in establishing the budgetary data reflected in the financial statements:

1. The Administration submits to the Board of Education a proposed operating budget for the fiscal year commencing July 1. The operating budget includes proposed expenditures and the means of financing them.
2. Public hearings are conducted and the proposed budget is available for inspection to obtain taxpayer comments.
3. Prior to September 30 the budget is legally adopted through passage of a resolution. On or before the last Tuesday in December, a tax levy ordinance is filed with the County Clerk to obtain tax revenues.
4. The Superintendent is authorized to transfer up to 10% of the total budget between departments within any fund without Board of Education approval; however, any revisions that alter the total expenditures of any fund must be approved by the Board of Education following the public hearing process mandated by law. The budget, which was amended on May 21, 2012, was originally adopted on August 22, 2011.
5. Formal budgetary integration is employed as a management control device during the year for the Governmental Funds.
6. The District has adopted a legal budget for all its Governmental Funds. Total actual expenditures for the governmental funds may not legally exceed the total budgeted for such funds. However, under the State Budget Act expenditures may exceed the budget if additional resources are available to finance such expenditures.
7. The budget (all appropriations) lapses at the end of each fiscal year.

**WILMETTE PUBLIC SCHOOLS DISTRICT 39**  
**BALANCE SHEET BY ACCOUNT**  
**GENERAL FUND**  
**JUNE 30, 2012**

<u>ASSETS</u>	<u>Educational</u>	<u>Operations and Maintenance</u>	<u>Working Cash</u>	<u>Tort Immunity</u>	<u>Total General</u>
Cash and investments	\$ 24,892,740	\$ 9,873,279	\$ 308,888	\$ 534	\$ 35,075,441
Receivables:					
Property taxes	17,472,163	2,163,708	48,629	502,529	20,187,029
Due from other governments	114,314	-	-	-	114,314
Due from other funds	-	-	97,000	-	97,000
Other	272	108	3	-	383
Prepaid items	-	-	-	108,151	108,151
<b>TOTAL ASSETS</b>	<b>\$ 42,479,489</b>	<b>\$ 12,037,095</b>	<b>\$ 454,520</b>	<b>\$ 611,214</b>	<b>\$ 55,582,318</b>
 <b><u>LIABILITIES AND FUND BALANCES</u></b>					
<b>Liabilities:</b>					
Accounts payable	\$ 96,465	\$ 102,035	\$ -	\$ -	\$ 198,500
Accrued salaries and related expenditure:	3,856,461	785	-	-	3,857,246
Due to other funds	-	-	-	97,000	97,000
Deferred revenue	18,063,457	2,163,708	48,629	502,529	20,778,323
<b>Total Liabilities</b>	<b>22,016,383</b>	<b>2,266,528</b>	<b>48,629</b>	<b>599,529</b>	<b>24,931,069</b>
 <b>Fund balances:</b>					
Nonspendable	-	-	-	108,151	108,151
Unassigned	20,463,106	9,770,567	405,891	(96,466)	30,543,098
<b>Total Fund Balances</b>	<b>20,463,106</b>	<b>9,770,567</b>	<b>405,891</b>	<b>11,685</b>	<b>30,651,249</b>
<b>TOTAL LIABILITIES AND FUND BALANCES</b>	<b>\$ 42,479,489</b>	<b>\$ 12,037,095</b>	<b>\$ 454,520</b>	<b>\$ 611,214</b>	<b>\$ 55,582,318</b>

**WILMETTE PUBLIC SCHOOLS DISTRICT 39**  
**SCHEDULE OF REVENUES, EXPENDITURES AND CHANGES**  
**IN FUND BALANCES BY ACCOUNT**  
**GENERAL FUND**  
**YEAR ENDED JUNE 30, 2012**

	Educational	Operations and Maintenance	Working Cash	Tort Immunity	Total General
<b>REVENUES</b>					
Local sources	\$ 43,184,336	\$ 4,356,111	\$ 99,965	\$ 905,280	\$ 48,545,692
State sources	9,859,341	-	-	-	9,859,341
Federal sources	1,297,124	-	-	-	1,297,124
<b>Total Revenues</b>	<b>54,340,801</b>	<b>4,356,111</b>	<b>99,965</b>	<b>905,280</b>	<b>59,702,157</b>
<b>EXPENDITURES</b>					
Current operating:					
Instruction	33,096,967	-	-	-	33,096,967
Support services	11,705,355	4,110,205	-	833,120	16,648,680
Community services	90,219	-	-	-	90,219
Non-programmed charges	1,225,694	-	-	-	1,225,694
<b>Total Expenditures</b>	<b>46,118,235</b>	<b>4,110,205</b>	<b>-</b>	<b>833,120</b>	<b>51,061,560</b>
Excess of revenues over expenditures	8,222,566	245,906	99,965	72,160	8,640,597
Other financing sources (uses):					
Principal on bonds sold	-	7,500,000	-	-	7,500,000
Transfers out	-	(412,500)	-	-	(412,500)
<b>Total other financing sources (uses)</b>	<b>-</b>	<b>7,087,500</b>	<b>-</b>	<b>-</b>	<b>7,087,500</b>
Net change in fund balance	8,222,566	7,333,406	99,965	72,160	15,728,097
Fund balances (deficit) at beginning of year	12,240,540	2,437,161	305,926	(60,475)	14,923,152
<b>FUND BALANCES AT END OF YEAR</b>	<b>\$ 20,463,106</b>	<b>\$ 9,770,567</b>	<b>\$ 405,891</b>	<b>\$ 11,685</b>	<b>\$ 30,651,249</b>

**WILMETTE PUBLIC SCHOOLS DISTRICT 39**  
**SCHEDULE OF REVENUES, EXPENDITURES AND CHANGES IN FUND BALANCE**  
**BUDGET AND ACTUAL**  
**EDUCATIONAL ACCOUNT**  
**YEAR ENDED JUNE 30, 2012 WITH COMPARATIVE ACTUAL TOTALS FOR 2011**

	2012			2011 Actual
	Final Budget	Actual	Variance Over/Under	
<b>REVENUES</b>				
Local sources:				
General levy	\$ 39,735,068	\$ 39,388,537	\$ (346,531)	\$ 28,781,859
Special education levy	281,077	277,372	(3,705)	211,002
Corporate personal property replacement taxes	294,611	415,632	121,021	379,234
Tuition	480,101	622,900	142,799	534,891
Investment income	24,000	9,197	(14,803)	15,355
Food services	1,195,000	1,277,092	82,092	1,260,435
Pupil activities	835,101	984,200	149,099	875,116
Contributions and donations from private sources	100,000	2,552	(97,448)	46,918
Other	252,702	206,854	(45,848)	160,941
<b>Total local sources</b>	<b>43,197,660</b>	<b>43,184,336</b>	<b>(13,324)</b>	<b>32,265,751</b>
State sources:				
Unrestricted:				
General state aid	1,251,930	1,251,909	(21)	1,309,898
Restricted:				
Special education - private facility tuition	176,965	237,771	60,806	188,515
Special education - extraordinary	525,279	459,493	(65,786)	612,191
Special education - personnel	914,202	1,243,385	329,183	1,218,885
Special education - summer school	3,251	1,565	(1,686)	1,642
Bilingual education - downstate - TPI	31,287	21,439	(9,848)	31,200
Reading improvement block grant	-	-	-	56,344
School safety & educational improvement	-	-	-	15,265
Other restricted revenue from state sources	53,523	30,094	(23,429)	64,270
On behalf payment to TRS from the state	5,975,000	6,613,685	638,685	6,117,663
<b>Total state sources</b>	<b>\$ 8,931,437</b>	<b>\$ 9,859,341</b>	<b>\$ 927,904</b>	<b>\$ 9,615,873</b>

(Continued)

**WILMETTE PUBLIC SCHOOLS DISTRICT 39**  
**SCHEDULE OF REVENUES, EXPENDITURES AND CHANGES IN FUND BALANCE**  
**BUDGET AND ACTUAL**  
**EDUCATIONAL ACCOUNT**  
**YEAR ENDED JUNE 30, 2012 WITH COMPARATIVE ACTUAL TOTALS FOR 2011**

	2012			2011 Actual
	Final Budget	Actual	Variance Over/Under	
Federal sources:				
Restricted:				
Special milk program	\$ 45,000	\$ 40,970	\$ (4,030)	\$ 41,059
Title I - low income	75,830	108,442	32,612	89,212
Title IV - safe & drug free schools - formula	-	(77)	(77)	827
Federal - special education - preschool	36,691	36,691	-	34,888
Federal - special education - IDEA	827,462	822,747	(4,715)	807,068
Federal - special education - IDEA - R&B	80,000	129,332	49,332	1,928
ARRA - Education jobs fund	-	1,793	1,793	119,266
ARRA - IDEA - preschool	-	-	-	14,326
ARRA - IDEA - flow through	-	-	-	3,411
Title III - english language acquisition	16,500	20,531	4,031	19,110
Title II - teacher quality	50,776	50,776	-	61,324
Medicaid - administrative outreach	25,000	59,637	34,637	47,965
Medicaid - fee for service	-	26,282	26,282	10,157
Total federal sources	<u>1,157,259</u>	<u>1,297,124</u>	<u>139,865</u>	<u>1,250,541</u>
Total revenues	<u>53,286,356</u>	<u>54,340,801</u>	<u>1,054,445</u>	<u>43,132,165</u>
<b>EXPENDITURES</b>				
Current operating:				
Instruction:				
Regular programs:				
Salaries	16,628,339	15,944,926	683,413	15,962,352
Employee benefits	1,923,308	1,741,351	181,957	1,686,815
On-behalf payments to TRS from the state	5,975,000	6,613,685	(638,685)	6,117,663
Purchased services	31,355	30,623	732	33,166
Supplies and materials	368,165	343,114	25,051	379,842
Capital outlay	141,430	37,389	104,041	26,684
Non-capitalized equipment	-	3,772	(3,772)	8,920
Total	<u>25,067,597</u>	<u>24,714,860</u>	<u>352,737</u>	<u>24,215,442</u>
Pre kindergarten programs:				
Purchased services	51,000	17,724	33,276	48,192
Supplies and materials	66,438	65,204	1,234	65,705
Total	<u>\$ 117,438</u>	<u>\$ 82,928</u>	<u>\$ 34,510</u>	<u>\$ 113,897</u>

(Continued)

**WILMETTE PUBLIC SCHOOLS DISTRICT 39**  
**SCHEDULE OF REVENUES, EXPENDITURES AND CHANGES IN FUND BALANCE**  
**BUDGET AND ACTUAL**  
**EDUCATIONAL ACCOUNT**  
**YEAR ENDED JUNE 30, 2012 WITH COMPARATIVE ACTUAL TOTALS FOR 2011**

	2012			2011 Actual
	Final Budget	Actual	Variance Over/Under	
<b>Special education programs:</b>				
Salaries	\$ 6,879,901	\$ 5,458,762	\$ 1,421,139	\$ 6,521,870
Employee benefits	1,076,918	860,898	216,020	946,944
Purchased services	51,435	24,240	27,195	21,920
Supplies and materials	83,806	86,780	(2,974)	79,119
Capital outlay	12,456	11,895	561	15,916
Other objects	100	125	(25)	100
Non-capitalized equipment	-	1,704	(1,704)	-
<b>Total</b>	<b>8,104,616</b>	<b>6,444,404</b>	<b>1,660,212</b>	<b>7,585,869</b>
<b>Remedial and supplemental programs:</b>				
Salaries	-	372,225	(372,225)	-
Employee benefits	-	37,937	(37,937)	-
<b>Total</b>	<b>-</b>	<b>410,162</b>	<b>(410,162)</b>	<b>-</b>
<b>Interscholastic programs:</b>				
Salaries	76,000	73,397	2,603	73,995
Employee benefits	950	881	69	899
Purchased services	7,500	8,160	(660)	7,549
Supplies and materials	12,000	12,768	(768)	12,825
<b>Total</b>	<b>96,450</b>	<b>95,206</b>	<b>1,244</b>	<b>95,268</b>
<b>Summer school:</b>				
Salaries	343,003	273,309	69,694	336,296
Employee benefits	4,162	6,530	(2,368)	1,067
Purchased services	750	652	98	920
Supplies and materials	30,000	28,205	1,795	28,339
Other objects	40,000	103,668	(63,668)	73,590
<b>Total</b>	<b>417,915</b>	<b>412,364</b>	<b>5,551</b>	<b>440,212</b>
<b>Differentiation specialists:</b>				
Salaries	-	586,215	(586,215)	-
Employee benefits	-	65,451	(65,451)	-
<b>Total</b>	<b>\$ -</b>	<b>\$ 651,666</b>	<b>\$ (651,666)</b>	<b>\$ -</b>

(Continued)

**WILMETTE PUBLIC SCHOOLS DISTRICT 39**  
**SCHEDULE OF REVENUES, EXPENDITURES AND CHANGES IN FUND BALANCE**  
**BUDGET AND ACTUAL**  
**EDUCATIONAL ACCOUNT**  
**YEAR ENDED JUNE 30, 2012 WITH COMPARATIVE ACTUAL TOTALS FOR 2011**

	2012			2011 Actual
	Final Budget	Actual	Variance Over/Under	
Bilingual:				
Salaries	\$ 263,310	\$ 251,452	\$ 11,858	\$ 208,782
Employee benefits	27,571	26,976	595	24,165
Purchased services	282	1,202	(920)	-
Supplies and materials	11,506	5,747	5,759	4,714
<b>Total</b>	<b>302,669</b>	<b>285,377</b>	<b>17,292</b>	<b>237,661</b>
<b>Total instruction</b>	<b>34,106,685</b>	<b>33,096,967</b>	<b>1,009,718</b>	<b>32,688,349</b>
Support services:				
Pupils:				
Attendance and social work:				
Salaries	819,726	834,712	(14,986)	861,017
Employee benefits	82,344	87,241	(4,897)	91,476
Purchased services	1,905	1,397	508	755
Supplies and materials	1,679	1,418	261	1,646
<b>Total</b>	<b>905,654</b>	<b>924,768</b>	<b>(19,114)</b>	<b>954,894</b>
Health services:				
Salaries	219,219	190,864	28,355	221,112
Employee benefits	41,172	56,776	(15,604)	41,640
Purchased services	2,474	1,836	638	398
Supplies and materials	5,500	5,478	22	6,251
Capital outlay	1,680	-	1,680	-
Other objects	300	182	118	-
Non-capitalized equipment	-	1,129	(1,129)	-
<b>Total</b>	<b>270,345</b>	<b>256,265</b>	<b>14,080</b>	<b>269,401</b>
Psychological services:				
Salaries	405,631	409,650	(4,019)	324,203
Employee benefits	47,297	51,591	(4,294)	38,959
Purchased services	2,364	1,063	1,301	-
Supplies and materials	5,353	2,833	2,520	1,932
Capital outlay	799	-	799	-
Other objects	-	-	-	799
<b>Total</b>	<b>\$ 461,444</b>	<b>\$ 465,137</b>	<b>\$ (3,693)</b>	<b>\$ 365,893</b>

(Continued)

**WILMETTE PUBLIC SCHOOLS DISTRICT 39**  
**SCHEDULE OF REVENUES, EXPENDITURES AND CHANGES IN FUND BALANCE**  
**BUDGET AND ACTUAL**  
**EDUCATIONAL ACCOUNT**  
**YEAR ENDED JUNE 30, 2012 WITH COMPARATIVE ACTUAL TOTALS FOR 2011**

	2012			2011 Actual
	Final Budget	Actual	Variance Over/Under	
Speech pathology and audiology services:				
Salaries	\$ 599,982	\$ 587,278	\$ 12,704	\$ 584,463
Employee benefits	78,250	58,558	19,692	54,986
Purchased services	2,288	2,176	112	3,575
Supplies and materials	4,044	2,785	1,259	4,311
<b>Total</b>	<b>684,564</b>	<b>650,797</b>	<b>33,767</b>	<b>647,335</b>
Other support services:				
Salaries	410,241	336,632	73,609	353,147
Employee benefits	31,217	21,169	10,048	30,193
Purchased services	10,650	2,241	8,409	4,757
Supplies and materials	8,397	3,001	5,396	3,135
Other objects	300	42	258	-
<b>Total</b>	<b>460,805</b>	<b>363,085</b>	<b>97,720</b>	<b>391,232</b>
<b>Total pupils</b>	<b>2,782,812</b>	<b>2,660,052</b>	<b>122,760</b>	<b>2,628,755</b>
Instructional staff:				
Improvement of instruction services:				
Salaries	1,500	212,259	(210,759)	11,011
Employee benefits	-	31,407	(31,407)	2,498
Purchased services	54,881	54,922	(41)	35,494
Supplies and materials	10,000	2,281	7,719	5,217
<b>Total</b>	<b>66,381</b>	<b>300,869</b>	<b>(234,488)</b>	<b>54,220</b>
Educational media services:				
Salaries	760,996	705,476	55,520	736,122
Employee benefits	130,046	106,748	23,298	104,923
Purchased services	42,865	42,410	455	49,559
Supplies and materials	70,118	59,969	10,149	73,837
Capital outlay	2,000	-	2,000	-
Other objects	1,000	700	300	136
<b>Total</b>	<b>1,007,025</b>	<b>915,303</b>	<b>91,722</b>	<b>964,577</b>
<b>Total instructional staff</b>	<b>\$ 1,073,406</b>	<b>\$ 1,216,172</b>	<b>\$ (142,766)</b>	<b>\$ 1,018,797</b>

(Continued)



**WILMETTE PUBLIC SCHOOLS DISTRICT 39**  
**SCHEDULE OF REVENUES, EXPENDITURES AND CHANGES IN FUND BALANCE**  
**BUDGET AND ACTUAL**  
**EDUCATIONAL ACCOUNT**  
**YEAR ENDED JUNE 30, 2012 WITH COMPARATIVE ACTUAL TOTALS FOR 2011**

	2012			2011 Actual
	Final Budget	Actual	Variance Over/Under	
<b>General administration:</b>				
<b>Board of education:</b>				
Salaries	\$ 57,868	\$ 57,597	\$ 271	\$ 56,334
Employee benefits	1,515	1,572	(57)	1,474
Purchased services	116,000	108,347	7,653	116,370
Supplies and materials	10,000	11,872	(1,872)	7,900
Other objects	10,000	11,093	(1,093)	10,923
<b>Total</b>	<b>195,383</b>	<b>190,481</b>	<b>4,902</b>	<b>193,001</b>
<b>Executive administration:</b>				
Salaries	267,220	266,813	407	288,575
Employee benefits	55,845	60,566	(4,721)	56,425
Purchased services	6,200	7,371	(1,171)	6,721
Supplies and materials	955	1,223	(268)	4,654
Capital outlay	1,000	-	1,000	-
Other objects	10,000	3,059	6,941	2,445
Non-capitalized equipment	-	694	(694)	-
<b>Total</b>	<b>341,220</b>	<b>339,726</b>	<b>1,494</b>	<b>358,820</b>
<b>Special area administration:</b>				
Salaries	268,901	266,475	2,426	233,893
Employee benefits	63,760	55,636	8,124	50,898
Purchased services	5,952	3,815	2,137	2,628
Supplies and materials	2,284	1,395	889	1,216
Capital outlay	1,152	1,152	-	-
Other objects	1,125	280	845	894
<b>Total</b>	<b>343,174</b>	<b>328,753</b>	<b>14,421</b>	<b>289,529</b>
<b>Total general administration</b>	<b>879,777</b>	<b>858,960</b>	<b>20,817</b>	<b>841,350</b>
<b>School administration:</b>				
<b>Office of the principal:</b>				
Salaries	1,327,038	1,288,649	38,389	1,267,474
Employee benefits	318,897	260,879	58,018	274,957
Purchased services	23,311	14,147	9,164	17,861
Supplies and materials	84,258	82,186	2,072	77,747
Capital outlay	7,700	2,745	4,955	-
Other objects	3,650	1,116	2,534	1,688
<b>Total</b>	<b>1,764,854</b>	<b>1,649,722</b>	<b>115,132</b>	<b>1,639,727</b>
<b>Total school administration</b>	<b>\$ 1,764,854</b>	<b>\$ 1,649,722</b>	<b>\$ 115,132</b>	<b>\$ 1,639,727</b>

(Continued)

**WILMETTE PUBLIC SCHOOLS DISTRICT 39**  
**SCHEDULE OF REVENUES, EXPENDITURES AND CHANGES IN FUND BALANCE**  
**BUDGET AND ACTUAL**  
**EDUCATIONAL ACCOUNT**  
**YEAR ENDED JUNE 30, 2012 WITH COMPARATIVE ACTUAL TOTALS FOR 2011**

	2012			2011 Actual
	Final Budget	Actual	Variance Over/Under	
<b>Business:</b>				
Direction of business support services:				
Salaries	\$ 103,429	\$ 103,429	\$ -	\$ 111,014
Employee benefits	21,432	22,020	(588)	28,547
Purchased services	6,700	4,140	2,560	3,512
Supplies and materials	5,600	4,215	1,385	3,853
Other	3,500	814	2,686	1,210
<b>Total</b>	<b>140,661</b>	<b>134,618</b>	<b>6,043</b>	<b>148,136</b>
<b>Fiscal services:</b>				
Salaries	170,630	149,689	20,941	171,272
Employee benefits	43,101	19,519	23,582	28,780
Purchased services	26,500	10,621	15,879	36,095
Capital outlay	4,000	-	4,000	4,000
Other objects	50,000	32,640	17,360	68,569
Non-capitalized equipment	-	1,382	(1,382)	-
<b>Total</b>	<b>294,231</b>	<b>213,851</b>	<b>80,380</b>	<b>308,716</b>
<b>Food services:</b>				
Salaries	753,466	726,556	26,910	731,545
Employee benefits	96,441	99,334	(2,893)	90,663
Purchased services	20,338	10,340	9,998	10,822
Supplies and materials	917,970	864,361	53,609	851,269
Capital outlay	10,000	7,147	2,853	4,649
Non-capitalized equipment	-	1,899	(1,899)	2,865
<b>Total</b>	<b>1,798,215</b>	<b>1,709,637</b>	<b>88,578</b>	<b>1,691,813</b>
<b>Total business</b>	<b>2,233,107</b>	<b>2,058,106</b>	<b>175,001</b>	<b>2,148,665</b>
<b>Central:</b>				
Planning, research, development and evaluation services:				
Salaries	365,750	362,423	3,327	370,291
Employee benefits	53,526	53,957	(431)	54,385
Purchased services	64,900	35,903	28,997	47,796
Supplies and materials	577,170	475,529	101,641	74,662
Capital outlay	5,000	-	5,000	1,938
Other objects	6,200	1,200	5,000	120
<b>Total</b>	<b>\$ 1,072,546</b>	<b>\$ 929,012</b>	<b>\$ 143,534</b>	<b>\$ 549,192</b>

(Continued)

**WILMETTE PUBLIC SCHOOLS DISTRICT 39**  
**SCHEDULE OF REVENUES, EXPENDITURES AND CHANGES IN FUND BALANCE**  
**BUDGET AND ACTUAL**  
**EDUCATIONAL ACCOUNT**  
**YEAR ENDED JUNE 30, 2012 WITH COMPARATIVE ACTUAL TOTALS FOR 2011**

	2012			2011
	Final Budget	Actual	Variance Over/Under	Actual
Information services:				
Purchased services	\$ 203,000	\$ 166,287	\$ 36,713	\$ 204,304
Supplies and materials	7,500	8,067	(567)	5,927
Total	210,500	174,354	36,146	210,231
Staff services:				
Salaries	306,108	299,917	6,191	295,523
Employee benefits	38,946	47,156	(8,210)	41,660
Purchased services	44,492	36,636	7,856	28,476
Supplies and materials	3,400	3,057	343	2,309
Other objects	3,000	1,172	1,828	999
Total	395,946	387,938	8,008	368,967
Data processing services:				
Salaries	395,280	389,723	5,557	367,319
Employee benefits	47,912	49,552	(1,640)	40,085
Purchased services	146,200	190,744	(44,544)	179,293
Supplies and materials	113,859	143,638	(29,779)	83,385
Capital outlay	693,121	563,144	129,977	800,643
Total	1,396,372	1,336,801	59,571	1,470,725
Total central	3,075,364	2,828,105	247,259	2,599,115
Other support services:				
Employee benefits	506,019	407,810	98,209	384,514
Supplies and materials	35,000	20,138	14,862	2,497
Capital outlay	25,000	6,290	18,710	19,970
Total	566,019	434,238	131,781	406,981
Total support services	12,375,339	11,705,355	669,984	11,283,390
Community services:				
Salaries	63,400	68,294	(4,894)	63,623
Employee benefits	100	146	(46)	-
Purchased services	6,560	6,830	(270)	3,960
Supplies and materials	14,500	14,949	(449)	12,120
Total community services	\$ 84,560	\$ 90,219	\$ (5,659)	\$ 79,703

(Continued)

**WILMETTE PUBLIC SCHOOLS DISTRICT 39**  
**SCHEDULE OF REVENUES, EXPENDITURES AND CHANGES IN FUND BALANCE**  
**BUDGET AND ACTUAL**  
**EDUCATIONAL ACCOUNT**  
**YEAR ENDED JUNE 30, 2012 WITH COMPARATIVE ACTUAL TOTALS FOR 2011**

	2012			2011 Actual
	Final Budget	Actual	Variance Over/Under	
Payments to other districts and governmental units:				
Payments for special education programs:				
Purchased services	\$ 152,702	\$ 152,702	\$ -	\$ 150,702
Other objects	6,557	6,130	427	5,638
Total	<u>159,259</u>	<u>158,832</u>	<u>427</u>	<u>156,340</u>
Payments for regular programs-tuition:				
Other objects	77,000	46,897	30,103	63,339
Total	<u>77,000</u>	<u>46,897</u>	<u>30,103</u>	<u>63,339</u>
Payments for special education programs-tuition:				
Other objects	700,000	1,019,965	(319,965)	827,606
Total	<u>700,000</u>	<u>1,019,965</u>	<u>(319,965)</u>	<u>827,606</u>
Total payments to other districts and governmental units	<u>936,259</u>	<u>1,225,694</u>	<u>(289,435)</u>	<u>1,047,285</u>
Total expenditures	<u>47,502,843</u>	<u>46,118,235</u>	<u>1,384,608</u>	<u>45,098,727</u>
Excess (deficiency) of revenues over expenditures	<u>5,783,513</u>	<u>8,222,566</u>	<u>2,439,053</u>	<u>(1,966,562)</u>
Other financing sources:				
Transfers in	-	-	-	600,000
Total other financing sources	<u>-</u>	<u>-</u>	<u>-</u>	<u>600,000</u>
Net change in fund balance	<u>\$ 5,783,513</u>	<u>8,222,566</u>	<u>\$ 2,439,053</u>	<u>(1,366,562)</u>
Fund balance at beginning of year		<u>12,240,540</u>		<u>13,607,102</u>
FUND BALANCE AT END OF YEAR		<u>\$ 20,463,106</u>		<u>\$ 12,240,540</u>

**WILMETTE PUBLIC SCHOOLS DISTRICT 39**  
**SCHEDULE OF REVENUES, EXPENDITURES AND CHANGES IN FUND BALANCE**  
**BUDGET AND ACTUAL**  
**OPERATIONS AND MAINTENANCE ACCOUNT**  
**YEAR ENDED JUNE 30, 2012 WITH COMPARATIVE ACTUAL TOTALS FOR 2011**

	2012		Variance Over/Under	2011
	Final Budget	Actual		Actual
<b>REVENUES</b>				
Local sources:				
General levy	\$ 4,111,750	\$ 4,284,150	\$ 172,400	\$ 3,874,247
Investment income	3,000	1,306	(1,694)	2,042
Rentals	29,000	33,942	4,942	42,697
Other	5,546	36,713	31,167	-
Total local sources	<u>4,149,296</u>	<u>4,356,111</u>	<u>206,815</u>	<u>3,918,986</u>
Total revenues	<u>4,149,296</u>	<u>4,356,111</u>	<u>206,815</u>	<u>3,918,986</u>
<b>EXPENDITURES</b>				
Current operating:				
Support services:				
Business:				
Facilities acquisition and construction service:				
Purchased services	12,000	396,891	(384,891)	-
Capital outlay	600,000	490,327	109,673	308,893
Non-capitalized equipment	-	-	-	28,525
Total	<u>612,000</u>	<u>887,218</u>	<u>(275,218)</u>	<u>337,418</u>
Operation and maintenance of plant services:				
Salaries	1,721,313	1,471,345	249,968	1,529,782
Employee benefits	318,938	246,116	72,822	231,680
Purchased services	892,600	729,137	163,463	682,463
Supplies and materials	944,825	776,389	168,436	874,836
Capital outlay	80,000	-	80,000	11,392
Total	<u>3,957,676</u>	<u>3,222,987</u>	<u>734,689</u>	<u>3,330,153</u>
Total support services	<u>4,569,676</u>	<u>4,110,205</u>	<u>459,471</u>	<u>3,667,571</u>
Total expenditures	<u>4,569,676</u>	<u>4,110,205</u>	<u>459,471</u>	<u>3,667,571</u>
Excess (deficiency) of revenues over expenditures	<u>\$ (420,380)</u>	<u>\$ 245,906</u>	<u>\$ 666,286</u>	<u>\$ 251,415</u>

(Continued)

**WILMETTE PUBLIC SCHOOLS DISTRICT 39**  
**SCHEDULE OF REVENUES, EXPENDITURES AND CHANGES IN FUND BALANCE**  
**BUDGET AND ACTUAL**  
**OPERATIONS AND MAINTENANCE ACCOUNT**  
**YEAR ENDED JUNE 30, 2012 WITH COMPARATIVE ACTUAL TOTALS FOR 2011**

	2012			2011 Actual
	Final Budget	Actual	Variance Over/Under	
Other financing sources (uses):				
Sale of fixed assets	\$ -	\$ -	\$ -	\$ 1,300
Principal on bonds sold	7,500,000	7,500,000	-	-
Transfers out	-	(412,500)	(412,500)	-
Total other financing sources (uses)	<u>7,500,000</u>	<u>7,087,500</u>	<u>(412,500)</u>	<u>1,300</u>
Net change in fund balance	<u>\$ 7,079,620</u>	7,333,406	<u>\$ 253,786</u>	252,715
Fund balance at beginning of year		<u>2,437,161</u>		<u>2,184,446</u>
FUND BALANCE AT END OF YEAR		<u>\$ 9,770,567</u>		<u>\$ 2,437,161</u>

**WILMETTE PUBLIC SCHOOLS DISTRICT 39**  
**SCHEDULE OF REVENUES, EXPENDITURES AND CHANGES IN FUND BALANCE**  
**BUDGET AND ACTUAL**  
**WORKING CASH ACCOUNT**  
**YEAR ENDED JUNE 30, 2012 WITH COMPARATIVE ACTUAL TOTALS FOR 2011**

	2012			2011
	Final Budget	Actual	Variance Over/Under	Actual
<b>REVENUES</b>				
Local sources:				
General levy	\$ (10,051)	\$ 99,836	\$ 109,887	\$ 186,136
Investment income	750	129	(621)	737
Total local sources	<u>(9,301)</u>	<u>99,965</u>	<u>109,266</u>	<u>186,873</u>
Total revenues	<u>(9,301)</u>	<u>99,965</u>	<u>109,266</u>	<u>186,873</u>
Excess of revenues over expenditures	<u>(9,301)</u>	<u>99,965</u>	<u>109,266</u>	<u>186,873</u>
Other financing uses:				
Transfers out	-	-	-	(600,000)
Total other financing uses	<u>-</u>	<u>-</u>	<u>-</u>	<u>(600,000)</u>
Net change in fund balance	<u>\$ (9,301)</u>	<u>99,965</u>	<u>\$ 109,266</u>	<u>(413,127)</u>
Fund balance at beginning of year		<u>305,926</u>		<u>719,053</u>
FUND BALANCE AT END OF YEAR		<u>\$ 405,891</u>		<u>\$ 305,926</u>

**WILMETTE PUBLIC SCHOOLS DISTRICT 39**  
**SCHEDULE OF REVENUES, EXPENDITURES AND CHANGES IN FUND BALANCE**  
**BUDGET AND ACTUAL**  
**TORT IMMUNITY ACCOUNT**  
**YEAR ENDED JUNE 30, 2012 WITH COMPARATIVE ACTUAL TOTALS FOR 2011**

	2012			2011 Actual
	Final Budget	Actual	Variance Over/Under	
<b>REVENUES</b>				
Local sources:				
Tort immunity levy	\$ 825,405	\$ 905,221	\$ 79,816	\$ 668,039
Investment income	50	59	9	99
Total local sources	<u>825,455</u>	<u>905,280</u>	<u>79,825</u>	<u>668,138</u>
Total revenues	<u>825,455</u>	<u>905,280</u>	<u>79,825</u>	<u>668,138</u>
<b>EXPENDITURES</b>				
Current operating:				
Support services:				
Insurance payments:				
Purchased services	468,000	581,566	(113,566)	549,139
Total	<u>468,000</u>	<u>581,566</u>	<u>(113,566)</u>	<u>549,139</u>
Educational, inspectional, supervisory services related to loss prevention or reduction:				
Salaries	181,107	180,433	674	194,813
Employee benefits	40,310	37,332	2,978	21,073
Total	<u>221,417</u>	<u>217,765</u>	<u>3,652</u>	<u>215,886</u>
Legal services:				
Purchased services	50,000	33,789	16,211	60,736
Total	<u>50,000</u>	<u>33,789</u>	<u>16,211</u>	<u>60,736</u>
Total support services	<u>739,417</u>	<u>833,120</u>	<u>(93,703)</u>	<u>825,761</u>
Total expenditures	<u>739,417</u>	<u>833,120</u>	<u>(93,703)</u>	<u>825,761</u>
Excess (deficiency) of revenues over expenditures	<u>\$ 86,038</u>	72,160	<u>\$ (13,878)</u>	(157,623)
Fund balance (deficit) at beginning of year		<u>(60,475)</u>		<u>97,148</u>
<b>FUND BALANCE (DEFICIT) AT END OF YEAR</b>		<u>\$ 11,685</u>		<u>\$ (60,475)</u>



**WILMETTE PUBLIC SCHOOLS DISTRICT 39**  
**SCHEDULE OF REVENUES, EXPENDITURES AND CHANGES IN FUND BALANCE**  
**BUDGET AND ACTUAL**  
**DEBT SERVICE FUND**  
**YEAR ENDED JUNE 30, 2012 WITH COMPARATIVE ACTUAL TOTALS FOR 2011**

	2012		Variance Over/Under	2011
	Final Budget	Actual		Actual
<b>REVENUES</b>				
Local sources:				
General levy	\$ 1,371,495	\$ 1,399,298	\$ 27,803	\$ 1,283,480
Investment income	850	681	(169)	988
Total local sources	<u>1,372,345</u>	<u>1,399,979</u>	<u>27,634</u>	<u>1,284,468</u>
Total revenues	<u>1,372,345</u>	<u>1,399,979</u>	<u>27,634</u>	<u>1,284,468</u>
<b>EXPENDITURES</b>				
Debt service:				
Interest on long term debt	699,494	699,032	462	610,510
Principal payments on long term debt	1,405,000	1,405,000	-	1,370,000
Other expenses	-	126,458	(126,458)	69,040
Total	<u>2,104,494</u>	<u>2,230,490</u>	<u>(125,996)</u>	<u>2,049,550</u>
Total expenditures	<u>2,104,494</u>	<u>2,230,490</u>	<u>(125,996)</u>	<u>2,049,550</u>
Excess (deficiency) of revenues over expenditures	<u>(732,149)</u>	<u>(830,511)</u>	<u>(98,362)</u>	<u>(765,082)</u>
<b>OTHER FINANCING SOURCES (USES)</b>				
Principal on bonds sold	-	1,065,000	1,065,000	3,372,431
Premium on bonds sold	-	773,114	773,114	77,311
Transfers in	799,100	799,100	-	801,400
Other uses	-	(1,032,281)	(1,032,281)	(3,376,679)
Total other financing sources	<u>799,100</u>	<u>1,604,933</u>	<u>805,833</u>	<u>874,463</u>
Net changes in fund balance	<u>\$ 66,951</u>	<u>774,422</u>	<u>\$ 707,471</u>	<u>109,381</u>
Fund balance at beginning of year		<u>1,616,069</u>		<u>1,506,688</u>
FUND BALANCE AT END OF YEAR		<u>\$ 2,390,491</u>		<u>\$ 1,616,069</u>

**WILMETTE PUBLIC SCHOOLS DISTRICT 39**  
**COMBINING BALANCE SHEET**  
**NONMAJOR GOVERNMENTAL FUNDS**  
**JUNE 30, 2012**

	<u>Transportation</u>	<u>Municipal Retirement/ Social Security</u>	<u>Fire Prevention and Safety</u>	<u>Total Nonmajor Governmental Funds</u>
<b><u>ASSETS</u></b>				
<b>Assets:</b>				
Cash and investments	\$ 415,232	\$ 661,506	\$ 979,579	\$ 2,056,317
Receivables:				
Property taxes	107,992	849,079	-	957,071
Other	4	7	10	21
<b>TOTAL ASSETS</b>	<b><u>\$ 523,228</u></b>	<b><u>\$ 1,510,592</u></b>	<b><u>\$ 979,589</u></b>	<b><u>\$ 3,013,409</u></b>
<b><u>LIABILITIES AND FUND BALANCES</u></b>				
<b>Liabilities:</b>				
Accounts payable	\$ 2,014	\$ 186,633	\$ -	\$ 188,647
Accrued salaries and related expenditures	12,746	43,960	-	56,706
Deferred revenue	348,501	849,079	-	1,197,580
<b>Total Liabilities</b>	<b><u>363,261</u></b>	<b><u>1,079,672</u></b>	<b><u>-</u></b>	<b><u>1,442,933</u></b>
<b>Fund Balances:</b>				
Restricted - reported in special revenue funds	159,967	430,920	-	590,887
Restricted - reported in capital projects funds	-	-	979,589	979,589
<b>Total Fund Balances</b>	<b><u>159,967</u></b>	<b><u>430,920</u></b>	<b><u>979,589</u></b>	<b><u>1,570,476</u></b>
<b>TOTAL LIABILITIES AND FUND BALANCES</b>	<b><u>\$ 523,228</u></b>	<b><u>\$ 1,510,592</u></b>	<b><u>\$ 979,589</u></b>	<b><u>\$ 3,013,409</u></b>

**WILMETTE PUBLIC SCHOOLS DISTRICT 39**  
**COMBINING SCHEDULE OF REVENUES, EXPENDITURES AND CHANGES IN FUND BALANCES**  
**NONMAJOR GOVERNMENTAL FUNDS**  
**YEAR ENDED JUNE 30, 2012**

	<u>Transportation</u>	<u>Municipal Retirement/ Social Security</u>	<u>Fire Prevention and Safety</u>	<u>Total Nonmajor Governmental Funds</u>
<b>REVENUES</b>				
Local sources	\$ 767,210	\$ 1,776,869	\$ 358,425	\$ 2,902,504
State sources	206,602	-	-	206,602
<b>Total Revenues</b>	<u>973,812</u>	<u>1,776,869</u>	<u>358,425</u>	<u>3,109,106</u>
<b>EXPENDITURES</b>				
Current operating:				
Instruction	-	719,451	-	719,451
Support services	1,062,885	789,461	220,497	2,072,843
Community services	-	7,541	-	7,541
Capital outlay	-	-	1,295,148	1,295,148
<b>Total Expenditures</b>	<u>1,062,885</u>	<u>1,516,453</u>	<u>1,515,645</u>	<u>4,094,983</u>
Excess (deficiency) of revenues over expenditures	<u>(89,073)</u>	<u>260,416</u>	<u>(1,157,220)</u>	<u>(985,877)</u>
<b>OTHER FINANCING USES</b>				
Transfers out	-	-	(386,600)	(386,600)
<b>Total other financing uses</b>	<u>-</u>	<u>-</u>	<u>(386,600)</u>	<u>(386,600)</u>
<b>Net changes in fund balances</b>	<u>(89,073)</u>	<u>260,416</u>	<u>(1,543,820)</u>	<u>(1,372,477)</u>
Fund balances at beginning of year	<u>249,040</u>	<u>170,504</u>	<u>2,523,409</u>	<u>2,942,953</u>
<b>FUND BALANCES AT END OF YEAR</b>	<u>\$ 159,967</u>	<u>\$ 430,920</u>	<u>\$ 979,589</u>	<u>\$ 1,570,476</u>

**WILMETTE PUBLIC SCHOOLS DISTRICT 39**  
**SCHEDULE OF REVENUES, EXPENDITURES AND CHANGES IN FUND BALANCE**  
**BUDGET AND ACTUAL**  
**TRANSPORTATION FUND**  
**YEAR ENDED JUNE 30, 2012 WITH COMPARATIVE ACTUAL TOTALS FOR 2011**

	2012		Variance Over/Under	2011
	Final Budget	Actual		Actual
<b>REVENUES</b>				
Local sources:				
General levy	\$ 348,750	\$ 220,968	\$ (127,782)	\$ 114,444
Transportation fees	573,175	546,040	(27,135)	535,481
Investment income	1,000	202	(798)	598
Total local sources	<u>922,925</u>	<u>767,210</u>	<u>(155,715)</u>	<u>650,523</u>
State sources:				
Transportation - regular/vocational	6,201	7,814	1,613	9,024
Transportation - special education	85,202	198,788	113,586	160,501
Total state sources	<u>91,403</u>	<u>206,602</u>	<u>115,199</u>	<u>169,525</u>
Total revenues	<u>1,014,328</u>	<u>973,812</u>	<u>(40,516)</u>	<u>820,048</u>
<b>EXPENDITURES</b>				
Support Services:				
Business:				
Pupil transportation services:				
Salaries	483,748	484,063	(315)	449,292
Employee benefits	85,501	63,334	22,167	53,931
Purchased services	363,580	454,022	(90,442)	402,547
Supplies and materials	49,000	60,588	(11,588)	51,431
Other objects	2,000	878	1,122	1,355
Total	<u>983,829</u>	<u>1,062,885</u>	<u>(79,056)</u>	<u>958,556</u>
Total support services	<u>983,829</u>	<u>1,062,885</u>	<u>(79,056)</u>	<u>958,556</u>
Total expenditures	<u>983,829</u>	<u>1,062,885</u>	<u>(79,056)</u>	<u>958,556</u>
Excess (deficiency) of revenues over expenditures	<u>\$ 30,499</u>	<u>(89,073)</u>	<u>\$ (119,572)</u>	<u>(138,508)</u>
Fund balance at beginning of year		<u>249,040</u>		<u>387,548</u>
FUND BALANCE AT END OF YEAR		<u>\$ 159,967</u>		<u>\$ 249,040</u>

**WILMETTE PUBLIC SCHOOLS DISTRICT 39**  
**SCHEDULE OF REVENUES, EXPENDITURES AND CHANGES IN FUND BALANCE**  
**BUDGET AND ACTUAL**  
**MUNICIPAL RETIREMENT/SOCIAL SECURITY FUND**  
**YEAR ENDED JUNE 30, 2012 WITH COMPARATIVE ACTUAL TOTALS FOR 2011**

	2012			2011 Actual
	Final Budget	Actual	Variance Over/Under	
<b>REVENUES</b>				
Local sources:				
General levy	\$ 1,055,718	\$ 879,366	\$ (176,352)	\$ 662,626
Social security/medicare levy	1,055,717	879,653	(176,064)	762,327
Corporate personal property replacement taxes	17,600	17,600	-	54,834
Investment income	100	250	150	225
<b>Total local sources</b>	<b>2,129,135</b>	<b>1,776,869</b>	<b>(352,266)</b>	<b>1,480,012</b>
<b>Total revenues</b>	<b>2,129,135</b>	<b>1,776,869</b>	<b>(352,266)</b>	<b>1,480,012</b>
<b>EXPENDITURES</b>				
Current operating:				
Instruction:				
Regular programs	305,049	282,960	22,089	276,619
Special education programs	367,251	414,631	(47,380)	422,607
Interscholastic programs	1,902	1,430	472	1,495
Summer school programs	12,004	13,897	(1,893)	14,299
Bilingual programs	6,871	6,533	338	6,192
<b>Total instruction</b>	<b>693,077</b>	<b>719,451</b>	<b>(26,374)</b>	<b>721,212</b>
Support services:				
Pupils:				
Attendance and social work services	10,802	11,003	(201)	11,051
Health services	32,916	23,872	9,044	28,470
Psychological services	5,832	5,680	152	4,350
Speech pathology and audiology services	8,700	8,283	417	8,231
Other support services - pupils	81,743	57,826	23,917	57,743
<b>Total pupils</b>	<b>139,993</b>	<b>106,664</b>	<b>33,329</b>	<b>109,845</b>
Instructional staff:				
Improvement of instruction staff	-	251	(251)	213
Educational media services	47,481	30,728	16,753	36,872
<b>Total instructional staff</b>	<b>47,481</b>	<b>30,979</b>	<b>16,502</b>	<b>37,085</b>
General administration:				
Board of education services	9,010	8,986	24	8,455
Executive administration services	11,213	11,247	(34)	14,603
Special area administration services	12,053	11,289	764	9,508
<b>Total general administration</b>	<b>\$ 32,276</b>	<b>\$ 31,522</b>	<b>\$ 754</b>	<b>\$ 32,566</b>

(Continued)

**WILMETTE PUBLIC SCHOOLS DISTRICT 39**  
**SCHEDULE OF REVENUES, EXPENDITURES AND CHANGES IN FUND BALANCE**  
**BUDGET AND ACTUAL**  
**MUNICIPAL RETIREMENT/SOCIAL SECURITY FUND**  
**YEAR ENDED JUNE 30, 2012 WITH COMPARATIVE ACTUAL TOTALS FOR 2011**

	2012			2011 Actual
	Final Budget	Actual	Variance Over/Under	
School administration:				
Office of the principal services	\$ 77,102	\$ 75,030	\$ 2,072	\$ 70,005
Total school administration	<u>77,102</u>	<u>75,030</u>	<u>2,072</u>	<u>70,005</u>
Business:				
Direction of business support services	11,448	7,782	3,666	9,211
Fiscal services	31,313	30,095	1,218	30,246
Operation and maintenance of plant services	275,850	251,611	24,239	247,828
Pupil transportation services	82,109	75,182	6,927	67,111
Food services	83,092	79,392	3,700	73,504
Total business	<u>483,812</u>	<u>444,062</u>	<u>39,750</u>	<u>427,900</u>
Central:				
Planning, research, development, and evaluation services	13,320	13,481	(161)	12,878
Staff services	27,351	30,143	(2,792)	28,100
Data processing services	45,414	57,580	(12,166)	50,924
Total central	<u>86,085</u>	<u>101,204</u>	<u>(15,119)</u>	<u>91,902</u>
Total support services	<u>866,749</u>	<u>789,461</u>	<u>77,288</u>	<u>769,303</u>
Community services	<u>8,593</u>	<u>7,541</u>	<u>1,052</u>	<u>6,572</u>
Total expenditures	<u>1,568,419</u>	<u>1,516,453</u>	<u>51,966</u>	<u>1,497,087</u>
Excess (deficiency) of revenues over expenditures	<u>\$ 560,716</u>	260,416	<u>\$ (300,300)</u>	(17,075)
Fund balance at beginning of year		<u>170,504</u>		<u>187,579</u>
FUND BALANCE AT END OF YEAR		<u>\$ 430,920</u>		<u>\$ 170,504</u>

**WILMETTE PUBLIC SCHOOLS DISTRICT 39**  
**SCHEDULE OF REVENUES, EXPENDITURES AND CHANGES IN FUND BALANCE**  
**BUDGET AND ACTUAL**  
**FIRE PREVENTION AND SAFETY FUND**  
**YEAR ENDED JUNE 30, 2012 WITH COMPARATIVE ACTUAL TOTALS FOR 2011**

	2012		Variance Over/Under	2011
	Final Budget	Actual		Actual
<b>REVENUES</b>				
Local sources:				
General levy	737,625	356,871	(380,754)	740,532
Investment income	1,500	1,554	54	9,207
Total local sources	<u>739,125</u>	<u>358,425</u>	<u>(380,700)</u>	<u>749,739</u>
Total revenues	<u>739,125</u>	<u>358,425</u>	<u>(380,700)</u>	<u>749,739</u>
<b>EXPENDITURES</b>				
Support services:				
Facilities acquisition and construction:				
Purchased services	195,000	220,497	(25,497)	399,341
Capital outlay	1,288,650	1,295,148	(6,498)	2,518,797
Total	<u>1,483,650</u>	<u>1,515,645</u>	<u>(31,995)</u>	<u>2,918,138</u>
Total support services	<u>1,483,650</u>	<u>1,515,645</u>	<u>(31,995)</u>	<u>2,918,138</u>
Total expenditures	<u>1,483,650</u>	<u>1,515,645</u>	<u>(31,995)</u>	<u>2,918,138</u>
Excess (deficiency) of revenues over expenditures	<u>(744,525)</u>	<u>(1,157,220)</u>	<u>(412,695)</u>	<u>(2,168,399)</u>
Other financing sources (uses):				
Principal on bonds sold	-	-	-	5,132,569
Transfers out	(799,100)	(386,600)	412,500	(801,400)
Total other financing sources (uses)	<u>(799,100)</u>	<u>(386,600)</u>	<u>412,500</u>	<u>4,331,169</u>
Net change in fund balance	<u>\$ (1,543,625)</u>	<u>(1,543,820)</u>	<u>\$ (195)</u>	<u>2,162,770</u>
Fund balance at beginning of year		<u>2,523,409</u>		<u>360,639</u>
FUND BALANCE AT END OF YEAR		<u>\$ 979,589</u>		<u>\$ 2,523,409</u>

**WILMETTE PUBLIC SCHOOLS DISTRICT 39**  
**STATEMENT OF CHANGES IN ASSETS AND LIABILITIES**  
**FIDUCIARY FUND - AGENCY FUND - ACTIVITY FUNDS**  
**YEAR ENDED JUNE 30, 2012**

---

	<u>Balance</u> <u>July 1, 2011</u>	<u>Additions</u>	<u>Deductions</u>	<u>Balance</u> <u>June 30, 2012</u>
<b>Assets:</b>				
Cash	<u>\$ 168,476</u>	<u>\$ 408,123</u>	<u>\$ 375,250</u>	<u>\$ 201,349</u>
<b>Liabilities:</b>				
Due to organizations	<u>\$ 168,476</u>	<u>\$ 408,123</u>	<u>\$ 375,250</u>	<u>\$ 201,349</u>



**THIS PAGE INTENTIONALLY LEFT BLANK**

## **STATISTICAL SECTION (UNAUDITED)**

### **Financial Trends**

These schedules contain trend information to help the reader understand how the District's financial performance and well being have changed over time.

### **Revenue Capacity**

These schedules contain information to help the reader assess the District's most significant local revenue source, the property tax.

### **Debt Capacity**

These schedules present information to help the reader assess the affordability of the District's current levels of outstanding debt and the District's ability to issue additional debt in the future.

### **Demographic and Economic Information**

These schedules offer demographic and economic indicators to help the reader understand the environment within which the District's financial activities take place.

### **Operating Information**

These schedules contain service and infrastructure data to help the reader understand how the information in the District's financial report relates to the services the District provides and the activities it performs.

**WILMETTE PUBLIC SCHOOLS DISTRICT 39**  
**NET ASSETS BY COMPONENT**  
**LAST TEN FISCAL YEARS**

	<u>2012</u>	<u>2011</u>	<u>2010</u>	<u>2009</u>
Governmental activities				
Invested in capital assets, net of related debt	\$ 17,836,863	\$ 18,079,503	\$ 21,309,413	\$ 24,990,652
Restricted	3,960,967	4,133,990	2,257,903	1,376,371
Unrestricted	<u>21,874,664</u>	<u>14,512,880</u>	<u>16,243,899</u>	<u>16,964,324</u>
Total governmental activities net assets	<u>\$ 43,672,494</u>	<u>\$ 36,726,373</u>	<u>\$ 39,811,215</u>	<u>\$ 43,331,347</u>

Source of information: District records.

2008	2007	2006	2005	2004	2003
\$ 25,401,375	\$ 24,946,426	\$ 22,999,904	\$ 22,866,135	\$ 23,779,375	\$ 22,846,094
1,211,710	1,404,698	2,205,361	8,163,942	7,690,172	3,759,782
20,440,250	21,421,342	21,892,657	16,825,588	15,099,454	18,637,334
<u>\$ 47,053,335</u>	<u>\$ 47,772,466</u>	<u>\$ 47,097,922</u>	<u>\$ 47,855,665</u>	<u>\$ 46,569,001</u>	<u>\$ 45,243,210</u>

**WILMETTE PUBLIC SCHOOLS DISTRICT 39**  
**CHANGES IN NET ASSETS**  
**LAST TEN FISCAL YEARS**

	2012	2011	2010	2009
Expenses				
Governmental activities				
Instruction:				
Regular programs	\$ 20,920,295	\$ 20,723,936	\$ 21,087,451	\$ 19,841,772
Special programs	7,537,015	8,080,170	7,600,115	7,742,514
Other instructional programs	1,466,473	795,127	759,869	742,221
State retirement contributions	6,613,685	6,117,663	6,157,944	4,432,743
Support services:				
Pupils	2,766,716	2,838,294	2,770,540	2,570,214
Instructional staff	1,247,151	1,393,769	1,236,682	1,341,041
General administration	2,281,876	1,748,014	1,556,024	1,724,366
School administration	1,722,007	1,824,531	1,752,180	1,729,293
Business	2,495,021	2,440,281	2,618,117	2,580,919
Transportation	1,062,885	1,158,593	3,436,890	969,637
Operations and maintenance	4,151,168	4,107,954	1,062,364	5,083,886
Central	2,528,137	1,888,436	2,084,898	2,488,280
Other supporting services	427,948	438,369	766,797	775,748
Community services	97,760	86,275	87,955	84,932
Nonprogrammed charges-excluding special education	1,225,694	1,047,285	923,504	75,570
Interest and fees	721,290	636,574	644,916	745,417
Total governmental activities expenses	<u>57,265,121</u>	<u>55,325,271</u>	<u>54,546,246</u>	<u>52,928,553</u>
Program revenues				
Governmental activities				
Charges for services				
Instruction:				
Regular programs	1,390,709	1,223,443	1,617,246	816,733
Special programs	423,245	347,505	366,466	157,953
Other instructional programs	-	-	-	162,468
Support services:				
Business	1,277,092	1,260,435	1,195,981	1,086,217
Transportation	546,040	535,481	506,143	567,488
Operations and maintenance	70,655	42,697	16,130	33,354
Operating grants and contributions	10,111,158	9,726,041	9,699,032	8,499,709
Total governmental activities program revenues	<u>13,818,899</u>	<u>13,135,602</u>	<u>13,400,998</u>	<u>11,323,922</u>
Net revenue (expense)	<u>(43,446,222)</u>	<u>(42,189,669)</u>	<u>(41,145,248)</u>	<u>(41,604,631)</u>
Governmental activities				
General revenues				
Taxes:				
Real estate taxes, levied for general purposes	39,665,909	28,992,861	30,175,028	27,109,681
Real estate taxes, levied for specific purposes	7,626,065	7,008,351	7,651,920	6,952,071
Real estate taxes, levied for debt service	1,399,298	1,283,480	1,408,484	1,306,394
Personal property replacement taxes	433,232	434,068	374,135	479,385
State aid-formula grants	1,251,909	1,309,898	1,318,443	1,005,990
Investment earnings	13,378	29,251	157,013	707,453
Miscellaneous	2,552	46,918	75,423	321,669
Total governmental activities general revenues	<u>50,392,343</u>	<u>39,104,827</u>	<u>41,160,446</u>	<u>37,882,643</u>
Change in net assets	<u>\$ 6,946,121</u>	<u>\$ (3,084,842)</u>	<u>\$ 15,198</u>	<u>\$ (3,721,988)</u>

Source of information: District records.

	2008	2007	2006	2005	2004	2003
\$	19,216,915	\$ 17,467,441	\$ 16,799,230	\$ 15,482,029	\$ 14,306,430	\$ 12,676,571
	7,010,484	6,823,349	6,528,300	6,047,383	5,695,670	3,954,171
	731,267	740,146	615,829	456,690	478,032	502,188
	3,310,777	2,169,789	1,484,730	2,291,090	2,500,820	2,093,379
	2,411,912	2,217,451	2,202,571	1,650,899	1,514,501	1,380,939
	956,322	824,955	909,899	852,629	774,482	556,631
	1,233,534	1,135,830	1,148,477	1,111,905	1,060,746	983,827
	1,841,356	1,653,609	1,544,306	1,534,730	1,384,977	1,296,331
	2,374,723	2,162,640	2,059,000	1,955,215	2,076,363	1,901,581
	965,830	965,594	962,050	917,294	988,281	1,049,060
	4,278,779	4,038,450	4,066,706	3,222,044	3,098,546	3,136,187
	2,337,801	2,275,205	2,361,320	1,804,324	2,007,515	1,944,404
	461,553	534,011	427,131	428,930	492,553	449,247
	83,063	104,922	110,062	81,407	84,686	84,186
	66,636	57,928	51,666	26,245	16,202	948,744
	657,101	529,041	551,278	602,848	591,325	591,545
	<u>47,938,053</u>	<u>43,700,361</u>	<u>41,822,555</u>	<u>38,465,662</u>	<u>37,071,129</u>	<u>33,548,991</u>
	847,506	735,034	650,744	721,058	647,855	371,557
	157,031	86,652	58,565	26,346	65,405	425,248
	221,471	269,066	191,632	134,929	186,938	429,170
	1,175,819	1,113,599	1,022,451	999,676	996,255	966,457
	509,451	459,051	436,814	430,819	450,009	37,915
	15,882	17,521	16,382	17,111	21,516	27,027
	<u>6,755,446</u>	<u>5,463,088</u>	<u>4,503,822</u>	<u>4,654,018</u>	<u>5,054,128</u>	<u>4,515,198</u>
	<u>9,682,606</u>	<u>8,144,011</u>	<u>6,880,410</u>	<u>6,983,957</u>	<u>7,422,106</u>	<u>6,772,572</u>
	<u>(38,255,447)</u>	<u>(35,556,350)</u>	<u>(34,942,145)</u>	<u>(31,481,705)</u>	<u>(29,649,023)</u>	<u>(26,776,419)</u>
	26,147,593	24,896,026	23,893,795	23,486,889	25,862,389	26,512,877
	6,889,164	6,593,457	6,132,811	5,835,964	2,117,297	1,121,831
	1,324,036	1,319,696	1,320,077	1,334,005	1,266,131	1,402,881
	539,807	504,375	462,300	364,745	301,428	265,215
	1,237,734	1,147,353	1,100,373	1,065,351	999,196	981,292
	1,024,889	1,407,436	1,059,060	587,310	271,917	259,960
	373,092	362,552	215,986	94,105	156,456	213,303
	<u>37,536,315</u>	<u>36,230,895</u>	<u>34,184,402</u>	<u>32,768,369</u>	<u>30,974,814</u>	<u>30,757,359</u>
\$	<u>(719,132)</u>	<u>\$ 674,545</u>	<u>\$ (757,743)</u>	<u>\$ 1,286,664</u>	<u>\$ 1,325,791</u>	<u>\$ 3,980,940</u>

**WILMETTE PUBLIC SCHOOLS DISTRICT 39**  
**FUND BALANCES, GOVERNMENTAL FUNDS**  
**LAST TEN FISCAL YEARS**

	<u>2012</u>	<u>2011</u>	<u>2010</u>	<u>2009</u>
General Fund				
Nonspendable	\$ 108,151	\$ 109,755		
Unassigned	<u>30,543,098</u>	<u>14,813,397</u>		
Total general fund	<u>\$ 30,651,249</u>	<u>\$ 14,923,152</u>		
All Other Governmental Funds				
Restricted, reported in:				
Debt service funds	\$ 2,390,491	\$ 1,616,069		
Special revenue funds	590,887	419,544		
Capital project funds	<u>979,589</u>	<u>2,523,409</u>		
Total all other governmental funds	<u>\$ 3,960,967</u>	<u>\$ 4,559,022</u>		
General Fund				
Nonspendable/Reserved			\$ -	\$ -
Unassigned/Unreserved			<u>15,791,548</u>	<u>13,901,162</u>
Total general fund			<u>\$ 15,791,548</u>	<u>\$ 13,901,162</u>
All Other Governmental Funds				
Reserved			\$ 98,928	\$ 826,327
Restricted, reported in:				
Special revenue funds			1,292,400	3,463,363
Debt service funds			1,506,688	601,577
Capital project funds			<u>360,639</u>	<u>2,603,946</u>
Total all other governmental funds			<u>\$ 3,258,655</u>	<u>\$ 7,495,213</u>

Note: Starting in fiscal year 2011 the Working Cash and Tort Immunity Accounts are reported in the General Fund. In 2011 the District implemented GASB #54. Amounts prior to fiscal year 2011 have not been restated for GASB Statement #54.

Source of information: District records.

<u>2008</u>	<u>2007</u>	<u>2006</u>	<u>2005</u>	<u>2004</u>	<u>2003</u>
\$ 99,983	\$ 99,983	\$ 100,083	\$ 157,189	\$ 252,495	\$ 325,883
<u>16,958,921</u>	<u>18,069,393</u>	<u>17,048,843</u>	<u>16,471,592</u>	<u>16,220,901</u>	<u>15,789,255</u>
<u>\$ 17,058,904</u>	<u>\$ 18,169,376</u>	<u>\$ 17,148,926</u>	<u>\$ 16,628,781</u>	<u>\$ 16,473,396</u>	<u>\$ 16,115,138</u>
\$ 717,700	\$ -	\$ -	\$ -	\$ -	\$ 1,402,881
4,344,607	4,530,485	5,038,390	5,885,289	5,762,549	3,799,934
1,259,204	1,213,993	1,109,001	1,475,418	1,410,553	-
<u>3,381,033</u>	<u>(302,208)</u>	<u>667,165</u>	<u>2,539,915</u>	<u>4,071,257</u>	<u>6,468,919</u>
<u>\$ 9,702,544</u>	<u>\$ 5,442,270</u>	<u>\$ 6,814,556</u>	<u>\$ 9,900,622</u>	<u>\$ 11,244,359</u>	<u>\$ 11,671,734</u>



**WILMETTE PUBLIC SCHOOLS DISTRICT 39**  
**CHANGES IN FUND BALANCES, GOVERNMENTAL FUNDS**  
**LAST TEN FISCAL YEARS**

	2012	2011	2010	2009
<b>Revenues</b>				
Local sources				
Property taxes	\$ 48,691,272	\$ 37,284,692	\$ 39,235,432	\$ 35,368,146
Replacement taxes	433,232	434,068	374,135	479,385
Tuition	622,900	534,891	511,664	389,555
Earnings on investments	13,378	29,251	379,369	562,238
Other local sources	3,087,393	2,921,588	3,265,725	2,754,127
Total local sources	<u>52,848,175</u>	<u>41,204,490</u>	<u>43,766,325</u>	<u>39,553,451</u>
State sources				
General state aid	1,251,909	1,309,898	1,077,939	1,005,990
Other state aid	8,814,034	8,475,500	7,690,272	6,900,558
Total state sources	<u>10,065,943</u>	<u>9,785,398</u>	<u>8,768,211</u>	<u>7,906,548</u>
Federal sources	1,297,124	1,250,541	2,249,264	1,672,316
Total revenues	<u>\$ 64,211,242</u>	<u>\$ 52,240,429</u>	<u>\$ 54,783,800</u>	<u>\$ 49,132,315</u>
<b>Expenditures</b>				
Current:				
Instruction				
Regular programs	\$ 18,467,063	\$ 18,488,295	\$ 18,750,516	\$ 18,160,883
Special programs	7,269,197	8,008,476	7,958,723	6,879,012
Other instructional programs	1,466,473	795,127	759,869	723,170
State retirement contributions	6,613,685	6,117,663	6,157,944	4,432,743
Total instruction	<u>33,816,418</u>	<u>33,409,561</u>	<u>33,627,052</u>	<u>30,195,808</u>
Supporting services				
Pupils	2,766,716	2,738,600	2,684,162	2,482,183
Instructional staff	1,247,151	1,055,882	1,007,502	1,122,126
General administration	1,723,602	1,699,677	1,511,291	1,681,670
School administration	1,724,752	1,709,732	1,647,689	1,629,084
Business	2,395,872	2,660,967	2,644,823	2,416,165
Transportation	1,138,067	1,025,667	1,080,032	853,567
Operations and maintenance	4,361,816	3,915,399	4,235,551	4,303,239
Central	2,929,309	2,691,017	2,817,788	2,488,280
Other supporting services	434,238	406,981	742,744	615,532
Total supporting services	<u>18,721,523</u>	<u>17,903,922</u>	<u>18,371,582</u>	<u>17,591,846</u>
Community services	97,760	86,275	87,955	84,932
Nonprogrammed charges	1,225,694	1,047,285	923,504	870,966
Total current	<u>53,861,395</u>	<u>52,447,043</u>	<u>53,010,093</u>	<u>48,743,552</u>
Other:				
Debt Service				
Principal	1,405,000	1,370,000	1,385,000	1,405,131
Interest and other	825,490	679,550	683,859	743,826
Capital outlay	1,295,148	2,518,797	2,051,020	3,607,079
Total other	<u>3,525,638</u>	<u>4,568,347</u>	<u>4,119,879</u>	<u>5,756,036</u>
Total expenses	<u>\$ 57,387,033</u>	<u>\$ 57,015,390</u>	<u>\$ 57,129,972</u>	<u>\$ 54,499,588</u>
Debt service as a percentage of noncapital expenditures	<u>4.0%</u>	<u>3.8%</u>	<u>3.8%</u>	<u>4.2%</u>

Source of information: District records.

2008	2007	2006	2005	2004	2003
\$ 34,360,793	\$ 32,809,179	\$ 31,346,683	\$ 30,656,858	\$ 29,245,817	\$ 29,037,589
539,807	504,375	462,300	364,745	301,428	265,215
480,819	385,857	282,005	188,542	276,550	194,826
947,748	1,407,436	1,059,059	587,310	246,225	285,652
2,813,911	2,631,707	2,303,614	2,234,702	2,246,630	2,274,351
<u>39,143,078</u>	<u>37,738,554</u>	<u>35,453,661</u>	<u>34,032,157</u>	<u>32,316,650</u>	<u>32,057,633</u>
1,237,734	1,147,353	1,100,373	1,065,351	999,196	981,292
5,697,821	4,459,451	3,485,276	4,075,697	4,409,364	3,763,943
<u>6,935,555</u>	<u>5,606,804</u>	<u>4,585,649</u>	<u>5,141,048</u>	<u>5,408,560</u>	<u>4,745,235</u>
989,982	1,029,548	1,024,668	589,333	633,752	751,255
<u>\$ 47,068,615</u>	<u>\$ 44,374,906</u>	<u>\$ 41,063,978</u>	<u>\$ 39,762,538</u>	<u>\$ 38,358,962</u>	<u>\$ 37,554,123</u>
\$ 17,633,998	\$ 16,100,710	\$ 15,399,237	\$ 14,174,281	\$ 13,374,055	\$ 11,854,973
6,958,252	6,625,439	6,071,825	5,108,176	4,436,111	3,921,858
714,315	725,330	602,212	444,444	466,280	491,523
3,310,777	2,169,789	1,484,730	2,291,090	2,500,820	2,093,379
<u>28,617,342</u>	<u>25,621,268</u>	<u>23,558,004</u>	<u>22,017,991</u>	<u>20,777,266</u>	<u>18,361,733</u>
2,331,544	2,154,143	2,135,841	1,592,798	1,463,932	1,333,933
954,851	823,239	845,703	796,700	740,118	524,196
1,195,220	1,102,170	1,114,295	1,075,944	1,036,142	960,105
1,750,785	1,578,924	1,471,641	1,464,348	1,328,316	1,241,387
2,225,676	2,028,729	1,933,482	1,795,520	1,768,247	1,544,086
869,524	890,907	895,260	851,875	924,305	985,221
4,472,515	3,825,788	3,447,831	3,164,589	3,027,625	3,090,111
2,159,068	2,183,608	2,302,909	1,804,324	2,007,515	1,944,404
399,280	463,910	403,804	426,194	492,264	449,247
<u>16,358,463</u>	<u>15,051,418</u>	<u>14,550,766</u>	<u>12,972,292</u>	<u>12,788,464</u>	<u>12,072,690</u>
83,063	104,922	110,062	81,407	84,686	84,186
66,636	196,635	450,173	920,188	1,241,055	948,744
<u>45,125,504</u>	<u>40,974,243</u>	<u>38,669,005</u>	<u>35,991,878</u>	<u>34,891,471</u>	<u>31,467,353</u>
821,897	808,801	977,699	957,385	973,924	655,000
802,097	538,666	578,230	626,547	640,998	608,011
4,490,452	2,621,361	3,405,798	3,375,880	4,308,934	2,972,064
<u>6,114,446</u>	<u>3,968,828</u>	<u>4,961,727</u>	<u>4,959,812</u>	<u>5,923,856</u>	<u>4,235,075</u>
<u>\$ 51,239,950</u>	<u>\$ 44,943,071</u>	<u>\$ 43,630,732</u>	<u>\$ 40,951,690</u>	<u>\$ 40,815,327</u>	<u>\$ 35,702,428</u>
<u>3.5%</u>	<u>3.2%</u>	<u>3.9%</u>	<u>4.2%</u>	<u>4.4%</u>	<u>3.9%</u>

**THIS PAGE INTENTIONALLY LEFT BLANK**

**WILMETTE PUBLIC SCHOOLS DISTRICT 39**  
**EQUALIZED ASSESSED VALUATION AND**  
**ESTIMATED ACTUAL VALUE OF TAXABLE PROPERTY**  
**LAST TEN TAX LEVY YEARS**

Tax Levy Year	Equalized Assessed Valuation	Amount of Increase Over Previous Year	Percentage Increase Over Previous Year	Actual Estimated Value *
2011	\$ 1,761,765,462	\$ (195,117,005)	-9.97%	\$ 5,285,296,386
2010	1,956,882,467	(236,060,475)	-10.76%	5,870,647,401
2009	2,192,942,942	136,215,129	6.62%	6,578,828,826
2008	2,056,727,813	132,170,859	6.87%	6,170,183,439
2007	1,924,556,954	110,206,354	7.28%	5,773,670,862
2006	1,513,438,648	(6,490,453)	-0.43%	4,540,315,944
2005	1,519,929,101	125,127,701	8.97%	4,559,787,303
2004	1,394,801,400	276,996,757	24.78%	4,184,404,200
2003	1,117,804,643	(6,706,563)	-0.60%	3,353,413,929
2002	1,124,511,206	76,971,982	7.35%	3,373,533,618

Source of information: Cook County Clerk's Office, Department of Tax Extension

**WILMETTE PUBLIC SCHOOLS DISTRICT 39**  
**PROPERTY TAX RATES - ALL DIRECT AND OVERLAPPING**  
**GOVERNMENTS**  
**LAST TEN TAX LEVY YEARS**

Taxing District	2011	2010	2009	2008
Cook County	0.4620	0.4230	0.3940	0.4150
Cook County Forest Reserve	0.0580	0.0510	0.0490	0.0510
Suburban Tb Sanitarium	0.0000	0.0000	0.0000	0.0000
Consolidated Elections	0.0250	0.0000	0.0210	0.0000
New Trier Township	0.0420	0.0370	0.0300	0.0310
New Trier General Assistance	0.0050	0.0040	0.0030	0.0030
Metro Water Reclamation District	0.3200	0.2740	0.2610	0.2520
North Shore Mosquito Abatement District	0.0100	0.0090	0.0080	0.0080
New Trier High School District #203	1.6740	1.4740	1.2370	1.2900
Oakton Community College #535	0.1960	0.1600	0.1400	0.1400
Wilmette Park District	0.4510	0.3900	0.3320	0.3480
Village of Wilmette	0.7780	0.6740	0.5810	0.5930
Wilmette Public Library District	0.3020	0.2660	0.2300	0.2410
Total overlapping rate	4.3230	3.7620	3.2860	3.3720
Wilmette Public School District No. 39	2.6194	2.3131	1.7158	1.8114
Total direct and overlapping rate	6.9424	6.0751	5.0018	5.1834

Source: Office of the County Clerk, Cook County, IL

2007	2006	2005	2004	2003	2002
0.4460	0.5000	0.5330	0.5930	0.6300	0.6900
0.0530	0.0570	0.0600	0.0600	0.0590	0.0610
0.0000	0.0050	0.0050	0.0010	0.0040	0.0060
0.0120	0.0000	0.0140	0.0000	0.0290	0.0000
0.0310	0.0390	0.0370	0.0370	0.0450	0.0430
0.0030	0.0030	0.0020	0.0020	0.0030	0.0020
0.2630	0.2840	0.3150	0.3470	0.3610	0.3710
0.0080	0.0090	0.0080	0.0080	0.0090	0.0090
1.2990	1.6620	1.5770	1.6210	1.7990	1.9350
0.1410	0.1660	0.1580	0.1610	0.1860	0.1790
0.3600	0.4410	0.4130	0.4400	0.5260	0.5100
0.5970	0.7280	0.6710	0.6890	0.7880	0.7390
0.2450	0.2980	0.2830	0.3150	0.3520	0.3150
3.4580	4.1920	4.0760	4.2740	4.7910	4.8600
1.8475	2.2607	2.1502	2.2375	2.7062	2.6095
5.3055	6.4527	6.2262	6.5115	7.4972	7.4695

**WILMETTE PUBLIC SCHOOLS DISTRICT 39**  
**PRINCIPAL PROPERTY TAXPAYERS**  
**CURRENT YEAR AND FIVE YEARS AGO**

---

<u>Taxpayer</u>	<u>2011 Equalized Assessed Valuation</u>	<u>Percentage of total 2011 Equalized Assessed Valuation (2)</u>
1630 Sheridan Corporation	\$ 12,151,293	0.69%
Joseph Moss	11,219,671	0.64%
Albertson Prop Tax	6,985,090	0.40%
Next Wilmette LLC	4,946,610	0.28%
Wesley Realty Group	4,532,345	0.26%
Ger Wilmette LLC	3,330,916	0.19%
MNR CR HLTH Serv 407	3,023,251	0.17%
Rambler Hill LLC	2,940,971	0.17%
Westmoreland Country Club	2,817,264	0.16%
Michigan Shores Club	2,813,574	0.16%
	<u>\$ 54,760,985</u>	<u>3.12%</u>

(1) Source of information: Cook County Clerk and Assessor's Offices

(2) 2011 total assessed valuation for Wilmette Public Schools is \$1,761,765,462

(3) 2006 total assessed valuation for Wilmette Public Schools is \$1,513,438,648.

---

Taxpayer	2006 Equalized Assessed Valuation	Percentage of total 2006 Equalized Assessed Valuation (3)
1630 Sheridan Corporation	\$ 14,985,015	0.99%
Plaza Del Lago	12,825,065	0.85%
Jewel Food Store	6,496,065	0.43%
3201 LLC	3,797,349	0.25%
Westmoreland Country Club	3,448,421	0.23%
Manor Health Care Corporation	3,156,004	0.21%
Wolin Levin	3,496,960	0.23%
Next Wilmette LLC	3,332,805	0.22%
Greg & Kim Polan	2,296,883	0.15%
LDP Mgmt. Inc	2,205,642	0.15%
	\$ 56,040,209	3.71%



**WILMETTE PUBLIC SCHOOLS DISTRICT 39**  
**SCHEDULE OF PROPERTY TAX RATES, EXTENSIONS AND COLLECTIONS**  
**LAST TEN TAX LEVY YEARS**

	2011	2010	2009	2008
<b>Rates extended:</b>				
Educational	\$ 2.0841	\$ 1.8402	\$ 1.3386	\$ 1.3838
Building (O&M)	0.2600	0.2062	0.1783	0.1895
Transportation	0.0129	0.0114	-	0.0056
Retirement (IMRF)	0.0509	0.0449	0.0208	0.0316
Social Security	0.0509	0.0449	0.0303	0.0474
Liability Insurance	0.0603	0.0383	0.0280	0.0365
Special Education	0.0148	0.0131	0.0097	0.0151
Working Cash Fund	0.0058	0.0051	0.0137	-
Life Safety	-	0.0383	0.0352	0.0365
Debt service	0.0797	0.0707	0.0612	0.0654
<b>Total rates extended</b>	<b>2.6194</b>	<b>2.3131</b>	<b>1.7158</b>	<b>1.8114</b>
<b>Property tax extensions:</b>				
Educational	\$ 36,716,954	\$ 36,010,551	\$ 29,354,734	\$ 28,460,999
Building (O&M)	4,580,590	4,035,092	3,910,017	3,897,499
Transportation	227,268	223,085	-	115,177
Retirement (IMRF)	896,739	878,640	456,132	649,926
Social Security	896,739	878,640	664,462	974,889
Liability Insurance	1,062,345	749,486	614,024	750,706
Special Education	260,741	256,352	212,715	310,566
Working Cash Fund	102,182	99,801	300,433	-
Life Safety	-	749,486	771,916	750,706
Debt service	1,404,127	1,383,516	1,342,081	1,345,100
<b>Total levies extended</b>	<b>\$ 46,147,685</b>	<b>\$ 45,264,648</b>	<b>\$ 37,626,515</b>	<b>\$ 37,255,568</b>
Current year collections	\$ 23,877,906	\$ 19,759,995	\$ 19,647,976	\$ 17,057,169
Subsequent collections	-	24,944,467	17,166,943	19,676,027
<b>Total collections</b>	<b>\$ 23,877,906</b>	<b>\$ 44,704,462</b>	<b>\$ 36,814,919</b>	<b>\$ 36,733,196</b>
<b>Percentage of extensions collected -</b>				
current year	51.7%	43.7%	52.2%	45.8%
subsequent collections	0.0%	55.1%	45.6%	52.8%
<b>Total percentage of extensions collected</b>	<b>51.7%</b>	<b>98.8%</b>	<b>97.8%</b>	<b>98.6%</b>

Tax rates are expressed in dollars per one hundred of assessed valuation.

Source of information: Cook County Clerk

	2007	2006	2005	2004	2003	2002
\$	1.3899	\$ 1.7011	\$ 1.6114	\$ 1.7017	\$ 2.0106	\$ 1.9250
	0.2044	0.2556	0.2525	0.2660	0.3358	0.3266
	0.0117	0.0147	0.0191	0.0127	0.0253	0.0253
	0.0260	0.0376	0.0346	0.0366	0.0461	0.0446
	0.0260	0.0315	0.0299	0.0308	0.0373	0.0367
	0.0364	0.0450	0.0382	0.0409	0.0495	0.0473
	0.0156	0.0200	0.0150	0.0158	0.0200	0.0148
	0.0287	0.0130	0.0312	0.0072	0.0257	0.0325
	0.0390	0.0534	0.0299	0.0294	0.0357	0.0374
	0.0698	0.0888	0.0884	0.0964	0.1202	0.1193
	<u>1.8475</u>	<u>2.2607</u>	<u>2.1502</u>	<u>2.2375</u>	<u>2.7062</u>	<u>2.6095</u>
\$	26,749,417	\$ 25,745,105	\$ 24,492,138	\$ 23,735,335	\$ 22,474,580	\$ 21,646,841
	3,933,794	3,868,349	3,837,821	3,710,172	3,753,588	3,672,654
	225,173	222,475	290,306	177,140	282,805	284,501
	500,385	569,053	525,895	510,497	515,308	501,532
	500,385	476,733	454,459	429,599	416,941	412,696
	700,539	681,047	580,613	570,474	553,313	531,894
	300,231	302,688	227,989	220,379	223,561	166,428
	552,348	196,747	474,218	100,426	287,276	365,466
	750,577	808,176	454,459	410,072	399,056	420,567
	1,343,341	1,343,934	1,343,617	1,344,589	1,343,601	1,341,542
\$	<u>35,556,190</u>	<u>\$ 34,214,308</u>	<u>\$ 32,681,516</u>	<u>\$ 31,208,681</u>	<u>\$ 30,250,029</u>	<u>\$ 29,344,120</u>
\$	16,726,251	\$ 15,879,969	\$ 15,286,326	\$ 14,893,475	\$ 14,148,215	\$ 13,856,985
	18,266,019	17,598,143	16,929,210	16,060,358	15,910,435	15,050,415
\$	<u>34,992,270</u>	<u>\$ 33,478,112</u>	<u>\$ 32,215,536</u>	<u>\$ 30,953,833</u>	<u>\$ 30,058,650</u>	<u>\$ 28,907,400</u>
	47.0%	46.4%	46.8%	47.7%	46.8%	47.2%
	51.4%	51.4%	51.8%	51.5%	52.6%	51.3%
	<u>98.4%</u>	<u>97.8%</u>	<u>98.6%</u>	<u>99.2%</u>	<u>99.4%</u>	<u>98.5%</u>

**WILMETTE PUBLIC SCHOOLS DISTRICT 39**  
**RATIO OF OUTSTANDING DEBT BY TYPE**  
**LAST TEN FISCAL YEARS**

Fiscal Year Ended June 30,	General Obligation Bonds	Debt Certificates	Capital Leases	Total	Percentage of Personal Income
2012	\$ 15,145,000	\$ 9,770,000	-	\$ 24,915,000	1.32%
2011	15,830,000	2,950,000	-	18,780,000	1.06%
2010	11,155,000	3,620,000	-	14,775,000	0.83%
2009	11,895,000	4,265,000	-	16,160,000	0.86%
2008	12,605,000	4,885,000	75,131	17,565,131	0.93%
2007	10,885,000	-	147,029	11,032,029	0.72%
2006	11,625,000	-	-	11,625,000	0.76%
2005	12,330,000	-	272,699	12,602,699	0.82%
2004	13,030,000	-	530,084	13,560,084	0.88%
2003	12,065,000	-	-	12,065,000	0.78%

Source of information: Annual Financial Statements 2003 to 2012.

**WILMETTE PUBLIC SCHOOLS DISTRICT 39**  
**RATIO OF GENERAL BONDED DEBT TO EQUALIZED ASSESSED VALUATION**  
**AND NET BONDED DEBT PER CAPITA**  
**LAST TEN FISCAL YEARS**

Fiscal Year Ended June 30,	General Bonded Debt	Less: Amounts Available to Repay Principal	Net General Bonded Debt	Percentage of Net General Bonded Debt to Assessed Valuation	Net General Bonded Debt Per Capita
2012	\$ 24,915,000	\$ 2,390,491	\$ 22,524,509	1.41%	828
2011	18,780,000	1,616,069	17,163,931	0.96%	653
2010	14,775,000	1,506,688	13,268,312	0.67%	504
2009	16,160,000	1,331,877	14,828,123	0.79%	561
2008	17,490,000	1,259,204	16,230,796	0.91%	614
2007	10,885,000	1,213,993	9,671,007	0.72%	350
2006	11,625,000	1,109,001	10,515,999	0.76%	380
2005	12,330,000	1,475,418	10,854,582	0.88%	393
2004	13,030,000	1,410,553	11,619,447	1.17%	420
2003	12,065,000	1,402,881	10,662,119	1.07%	386

Source of information: Annual Financial Statements 2003 to 2012.

**THIS PAGE INTENTIONALLY LEFT BLANK**

**WILMETTE PUBLIC SCHOOLS DISTRICT 39**  
**COMPUTATION OF DIRECT AND OVERLAPPING BONDED DEBT**  
**JUNE 30, 2012**

Jurisdiction overlapping	Bonded indebtedness	Portion applicable to School District	
		Percent	Amount
<b>County</b>			
Cook County	\$ 3,709,260,000	1.161%	\$ 43,064,509
Cook County Forest Preserve	139,425,000 (2)	1.161%	1,618,724
Metropolitan Water Reclamation District	2,446,220,030 (1)	1.184%	28,963,245
<b>School Districts</b>			
High School District 203	18,601,855 (2)(3)	32.383%	6,023,839
Community College District 535	27,245,000	7.562%	2,060,267
<b>Park Districts</b>			
Wilmette Park District	25,574,000	89.634%	22,922,999
Glenview Park District	16,000,000 (2)	3.100%	496,000
<b>Municipalities</b>			
Village of Wilmette	74,375,000	89.436%	66,518,025
Village of Glenview	<u>43,970,000 (4)</u>	3.651%	<u>1,605,345</u>
<b>Total overlapping debt</b>	<b>6,500,670,885</b>		<b>173,272,953</b>
<b>Wilmette Public School District No. 39</b>	<u><b>15,145,000</b></u>	<b>100.000%</b>	<u><b>15,145,000</b></u>
<b>Total overlapping and direct bonded debt</b>	<u><u><b>6,515,815,885</b></u></u>		<u><u><b>188,417,953</b></u></u>

(1) Includes IEPA Revolving Loan Fund Bonds

(2) Excludes outstanding principal amounts of General Obligation Alternative Revenue Source Bonds which are expected to be paid from sources other than general taxation.

(3) Includes original principal amounts of outstanding General Obligation Capital Appreciation Bonds.

(4) Excludes self-operating bonds for which an abatement is filed annually.

Source: Offices of the Cook County Clerk, Comptroller and Treasurer of the Metropolitan Water Reclamation District of Greater Chicago

Note: Percent applicable to School District calculated using assessed valuation of the School District area value contained within the noted governmental unit divided by assessed valuation of the governmental unit. Overlapping governments with no outstanding debt are not reflected.

**WILMETTE PUBLIC SCHOOLS DISTRICT 39**  
**LEGAL DEBT MARGIN INFORMATION**  
**LAST TEN FISCAL YEARS**

	<u>2012</u>	<u>2011</u>	<u>2010</u>	<u>2009</u>
Debt limit	\$ 121,561,817	\$ 135,024,890	\$ 151,313,063	\$ 141,911,586
Total net debt applicable to limit	<u>22,524,509</u>	<u>17,163,931</u>	<u>13,268,312</u>	<u>16,160,000</u>
Legal debt margin	<u>\$ 99,037,308</u>	<u>\$ 117,860,959</u>	<u>\$ 138,044,751</u>	<u>\$ 125,751,586</u>
Total net debt applicable to the limit as a percentage of debt limit	<u>18.53%</u>	<u>12.71%</u>	<u>8.77%</u>	<u>11.39%</u>

Legal Debt Margin calculation for fiscal year June 30, 2012

Assessed valuation of taxable properties for the tax year 2011	\$ 1,761,765,462
Rate	<u>6.9%</u>
Debt Limit	<u>121,561,817</u>
Debt subject to limitation:	
Total debt subject to limitation	24,915,000
Less Debt Service Fund balance	<u>(2,390,491)</u>
Net debt outstanding subject to limitation	<u>22,524,509</u>
Legal bonded debt margin at June 30, 2012	<u>\$ 99,037,308</u>

Source of information: District records.  
Assessed valuation obtained from Will County tax reports.

<u>2008</u>	<u>2007</u>	<u>2006</u>	<u>2005</u>	<u>2004</u>	<u>2003</u>
\$ 132,794,430	\$ 104,427,267	\$ 104,875,108	\$ 96,423,208	\$ 77,591,273	\$ 77,591,273
17,565,131	11,032,028	11,625,000	12,602,699	13,560,083	12,065,000
<u>\$ 115,229,299</u>	<u>\$ 93,395,239</u>	<u>\$ 93,250,108</u>	<u>\$ 83,820,509</u>	<u>\$ 64,031,190</u>	<u>\$ 65,526,273</u>
<u>13.23%</u>	<u>10.56%</u>	<u>11.08%</u>	<u>13.07%</u>	<u>17.48%</u>	<u>15.55%</u>



**WILMETTE PUBLIC SCHOOLS DISTRICT 39**  
**DEMOGRAPHIC AND MISCELLANEOUS STATISTICS**  
**LAST TEN CALENDAR YEARS**

Year	Population	Personal Income ( <i>thousands of dollars</i> )	Per Capita Personal Income	Unemployment rate
2012	27,206	\$ 1,887,090	\$ 69,363	6.5%
2011	26,300	1,772,804	67,407	6.4%
2010	26,300	1,784,797	67,863	6.2%
2009	26,418	1,886,958	71,427	3.8%
2008	26,435	1,888,173	71,427	3.0%
2007	27,651	1,537,700	55,611	2.7%
2006	27,651	1,537,700	55,611	3.6%
2005	27,651	1,537,700	55,611	3.9%
2004	27,651	1,537,700	55,611	4.4%
2003	27,651	1,537,700	55,611	3.4%

Sources: US Census Bureau, Illinois Department of Employment Security

**WILMETTE PUBLIC SCHOOLS DISTRICT 39**  
**PRINCIPAL EMPLOYERS**  
**CURRENT YEAR AVAILABLE AND FOUR YEARS AGO**

Employer	2012	
	Employees	Percentage of Total City Employment (2)
New Trier High School District 203	730	6.0%
Wilmette School District Number 39	550 *	4.6%
Wilmette Park District	531 *	4.4%
Village of Wilmette	235 *	1.9%
Carson Pirie Scott & Co.	230 *	1.9%
F.J. Kerrigan Plumbing Co.	65	0.5%
North Suburban Patrol Inc.	60	0.5%
Chase Bank, Div of JP Morgan & Chase Co.	45	0.4%
Homers Ice Cream, Inc.	35	0.3%
Bierdeman Paper Box, Inc.	35	0.3%
Edens Bank	34	0.3%
Kashian Bros	32	0.3%
<b>Total</b>	<b>2,582</b>	<b>21.4%</b>

Employer	2008	
	Employees	Percentage of Total City Employment
Wilmette Park District	800 **	N/A
Wilmette School District Number 39	621 *	N/A
Carson Pirie Scott & Co.	390	N/A
Village of Wilmette	250	N/A
Koenig & Strey GMAC Real Estate	130	N/A
F.J. Kerrigan Plumbing Co.	65	N/A
North Suburban Patrol Inc.	60	N/A
Chase Bank, Div of JP Morgan & Chase Co.	50	N/A
Bierdeman Paper Box, Inc.	45	N/A
Homers Ice Cream, Inc.	45	N/A
<b>Total</b>	<b>2,456</b>	<b>N/A</b>

Source: Phone canvass of employers, Illinois Services and Manufacturers Directories, Harris Illinois Industrial Directory, and Illinois Department of Commerce and Economic Opportunity

Note: District began compiling the information in 2008. Information from nine years ago was unavailable.

Note: Total city employment for 2012 is 12,075. Total city employment for 2008 is not available.

\* Includes part-time employees

\*\* Includes seasonal employees

**WILMETTE PUBLIC SCHOOLS DISTRICT 39**  
**NUMBER OF EMPLOYEES BY TYPE**  
**LAST TEN FISCAL YEARS**

	2011- 2012	2010 - 2011	2009 - 2010	2008 - 2009
<b>Administration:</b>				
Superintendent	1	1	1	1
District Administrators	6	6	6	6
Principals and assistants	10	9	9	9
<b>Total administration</b>	<b>17</b>	<b>16</b>	<b>16</b>	<b>16</b>
<b>Instruction:</b>				
<b>Teachers:</b>				
Elementary (K-4)	85	87	91	93
Middle (5-8)	33	34	35	34
Jr. High (7-8)	32	33	35	35
Art	8	9	9	9
Music	11	11	13	13
Drama	3	3	3	3
Foreign language	18	19	20	20
Library media specialist	6	6	6	6
Physical education	19	19	19	19
Special education and bilingual	68	78	78	78
Curriculum differentiation/gifted	8	8	8	8
Curriculum Coordinators	2	2	2	1
Psychologists	6	6	6	7
Certified school nurse	1	1	1	1
School workers and counselors	10	10	10	10
Technology	8	8	8	9
<b>Total instruction</b>	<b>318</b>	<b>334</b>	<b>344</b>	<b>346</b>
<b>Other supporting staff:</b>				
Clerical 10 month	11	11	11	11
Clerical 12 month	9	9	11	11
Classroom assistants	29	31	29	24
Reading assistants	5	4	4	4
Special education assistants	72	81	87	92
Technology	5	4	5	5
Maintenance custodians & warehouse	30	32	36	37
Food Service	20	20	20	18
Transportation	13	12	13	12
Nurses	5	7	7	9
Occupation and physical therapists	6	6	5	7
<b>Total support staff</b>	<b>205</b>	<b>217</b>	<b>228</b>	<b>230</b>
<b>Total staff</b>	<b>540</b>	<b>567</b>	<b>588</b>	<b>592</b>

Source: Obtained from the District's Human Resources department.

2007 - 2008	2006 - 2007	2005 - 2006	2004 - 2005	2003 - 2004	2002 - 2003
1	1	1	1	1	1
5	3	3	4	4	4
9	10	10	10	8	8
15	14	14	15	13	13
89	89	90	89	92	90
35	34	34	32	32	32
33	33	34	36	36	35
9	8	9	8	9	7
12	12	12	12	12	11
3	2	3	3	3	3
17	19	18	12	12	11
5	6	6	6	6	6
19	19	19	17	17	17
75	72	66	61	53	52
8	8	8	8	8	10
1	4	3	3	4	2
6	5	5	5	5	5
-	-	1	1	1	1
9	8	8	8	8	7
9	8	8	8	8	8
330	327	324	309	306	297
11	18	18	19	19	19
10	13	14	12	12	12
27	22	24	24	23	23
3	3	3	3	4	4
93	79	85	72	67	75
5	6	6	6	5	3
37	39	38	38	38	37
18	17	17	17	17	17
14	11	9	12	10	10
9	7	6	6	6	6
6	4	5	3	3	3
233	219	225	212	204	209
578	560	563	536	523	519

**WILMETTE PUBLIC SCHOOLS DISTRICT 39**  
**OPERATING INDICATORS BY FUNCTION**  
**LAST TEN FISCAL YEARS**

---

Fiscal year ended June 30,	Average Daily Attendance	Operating Expenditures	Cost per Pupil	Percentage Change	Expenses	Cost per Pupil
2012	3,299	\$ 44,872,597	\$ 13,602	2.89%	\$ 57,254,045	\$ 17,355
2011	3,303	43,663,704	13,219	0.74%	55,325,271	16,750
2010	3,341	43,841,587	13,122	0.48%	54,546,246	16,326
2009	3,332	43,512,656	13,059	2.97%	52,958,533	15,894
2008	3,242	41,114,752	12,682	9.28%	48,215,745	14,872
2007	3,278	38,041,791	11,605	5.06%	43,700,055	13,331
2006	3,278	36,208,102	11,046	9.14%	41,822,555	12,759
2005	3,250	32,891,001	10,120	6.12%	38,465,662	11,836
2004	3,282	31,299,697	9,537	8.04%	37,071,129	11,295
2003	3,244	28,635,462	8,827	8.69%	33,548,991	10,342

Source of information: District records.

---

Percentage Change	Teaching Staff	Pupil-Teacher Ratio	Percentage of Students Receiving Free or Reduced Meals
3.61%	318	10.4	2.90%
2.60%	334	9.9	2.50%
2.72%	334	10.0	2.20%
6.87%	344	9.7	0.30%
11.56%	346	9.4	0.30%
4.49%	330	9.9	0.30%
7.80%	327	10.0	0.30%
4.78%	324	10.0	0.22%
9.22%	309	10.6	0.14%
-3.26%	306	10.6	0.14%

**WILMETTE PUBLIC SCHOOLS DISTRICT 39**  
**SCHOOL BUILDING INFORMATION**  
**LAST TEN FISCAL YEARS**

	2011	2011	2010	2009
<b>Harper School</b>				
Square feet	47,000	47,000	47,000	47,000
Capacity (students)	456	456	456	456
Enrollment	421	410	432	419
<b>Romona School</b>				
Square feet	77,500	77,500	77,500	77,500
Capacity (students)	528	528	528	528
Enrollment	501	531	535	495
<b>Central School</b>				
Square feet	76,000	76,000	76,000	76,000
Capacity (students)	696	696	696	696
Enrollment	544	534	551	551
<b>McKenzie School</b>				
Square feet	69,000	69,000	69,000	69,000
Capacity (students)	624	624	624	624
Enrollment	564	545	535	508
<b>Wilmette Junior High</b>				
Square feet	113,000	113,000	113,000	113,000
Capacity (students)	917	917	917	917
Enrollment	824	822	861	880
<b>Highcrest Middle School</b>				
Square feet	123,425	123,425	123,425	123,425
Capacity (students)	850	850	850	850
Enrollment	806	802	801	812
<b>Mikaelian Education Center</b>				
Square feet	23,560	23,560	23,560	23,560

Source of information: District records.

2008	2007	2006	2005	2004	2003
47,000	47,000	47,000	47,000	47,000	47,000
456	456	456	456	456	456
444	439	418	387	420	387
77,500	77,500	77,500	77,500	77,500	77,500
528	528	528	528	528	528
489	512	516	479	493	453
76,000	76,000	76,000	76,000	76,000	76,000
696	696	696	696	696	696
570	542	564	576	576	572
69,000	69,000	69,000	69,000	69,000	69,000
624	624	624	624	624	624
478	478	489	523	509	517
113,000	113,000	113,000	113,000	113,000	113,000
917	917	917	917	917	917
879	834	806	808	802	840
123,425	123,425	123,425	123,425	123,425	123,425
850	850	850	850	850	850
843	857	822	810	796	786
23,560	23,560	23,560	23,560	23,560	23,560



**WILMETTE PUBLIC SCHOOLS DISTRICT 39**  
**OPERATING STATISTICS**  
**JUNE 30, 2012**

---

Location:	Approximately 15 miles north of Chicago's "Loop" bordering Lake Michigan and comprising most of the Village of Wilmette and a small portion of Glenview
Date of organization:	1901
Number of schools:	6
Area served:	4.4 sq miles
Median home value:	\$ 441,600
Student enrollment:	3,660
Certified teaching staff:	318
Pupil/Teacher ratio:	10.4:1
Faculty holding masters degree:	76.4%